

WM. W. GREEN
COUNTY SURVEYOR
901 LEOPARD STREET ROOM 102
CORPUS CHRISTI, TEXAS 78401

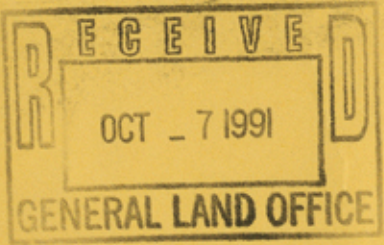
ANTONIO GMF TX 782

5 OCT 1991 PM

SAN ANTONIO GMF TX 782



File No. Sketch File 74
NUECES County
North city limits of Corpus Christi
Filed Oct. 7 19 91
By GARRY MAURO, Com'r
Douglas Howard



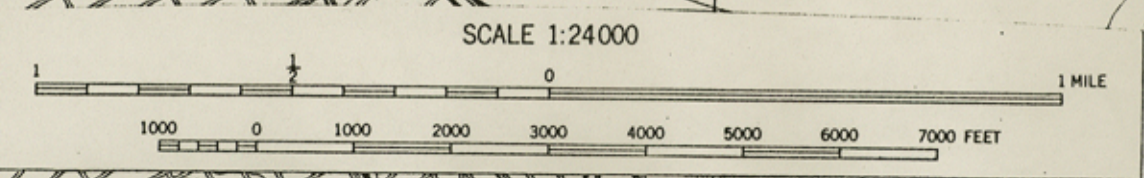
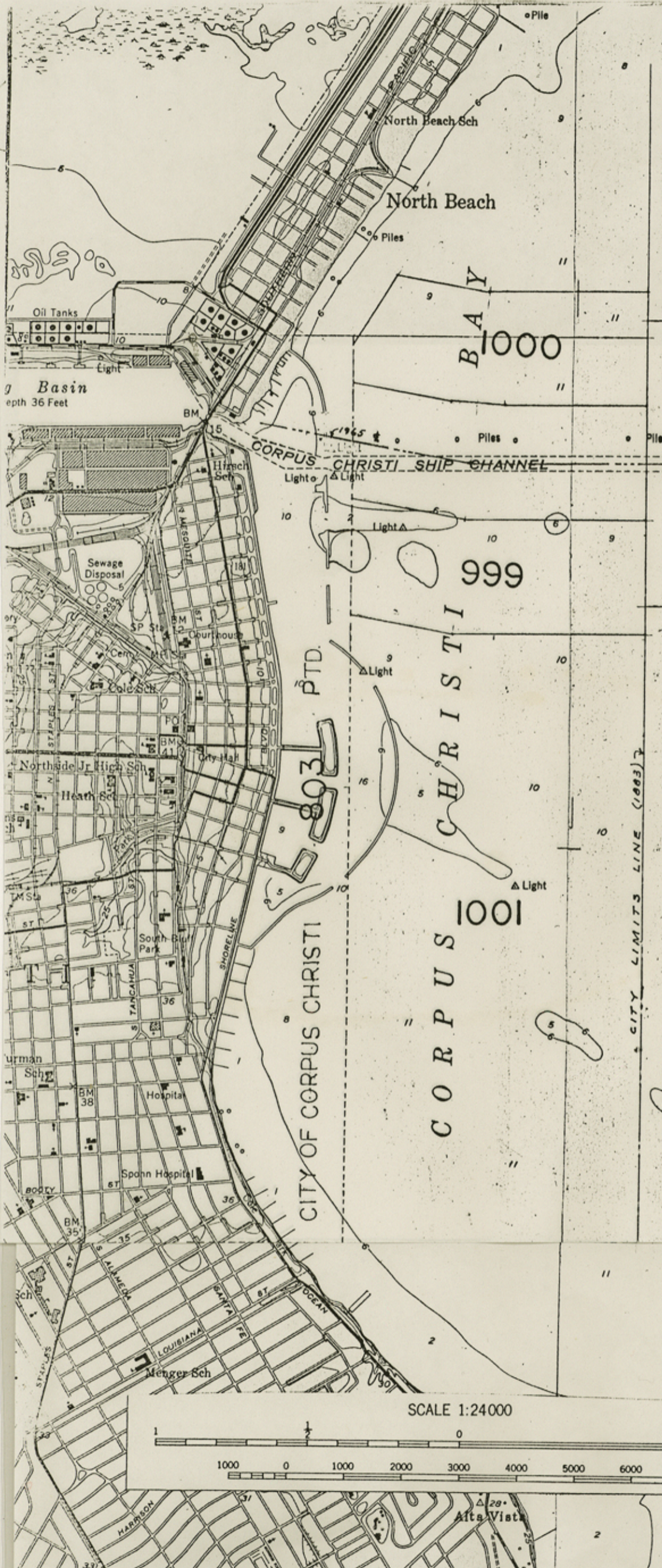
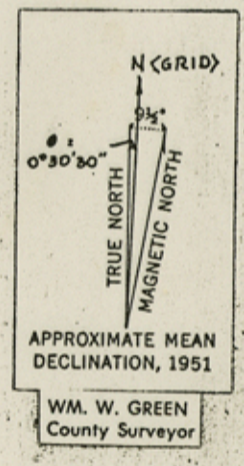
*Corpus Christi
City Limits*

TEXAS GENERAL LAND OFFICE
ATTN: C.B. (Ben) Thomson
Stephen F. Austin Bldg.
1700 N. Congress Ave.
Austin, TX 78701

File No. _____
Sketch File 74
NUECES
North city limits of Corpus Christi
Filed Oct 7 19 91
By Douglas Howard
GARRI MAURO, Com'r
NUECES COUNTY

NUECES COUNTY NAVIGATION

ST-2
DISTRICT NO 1 PTD.



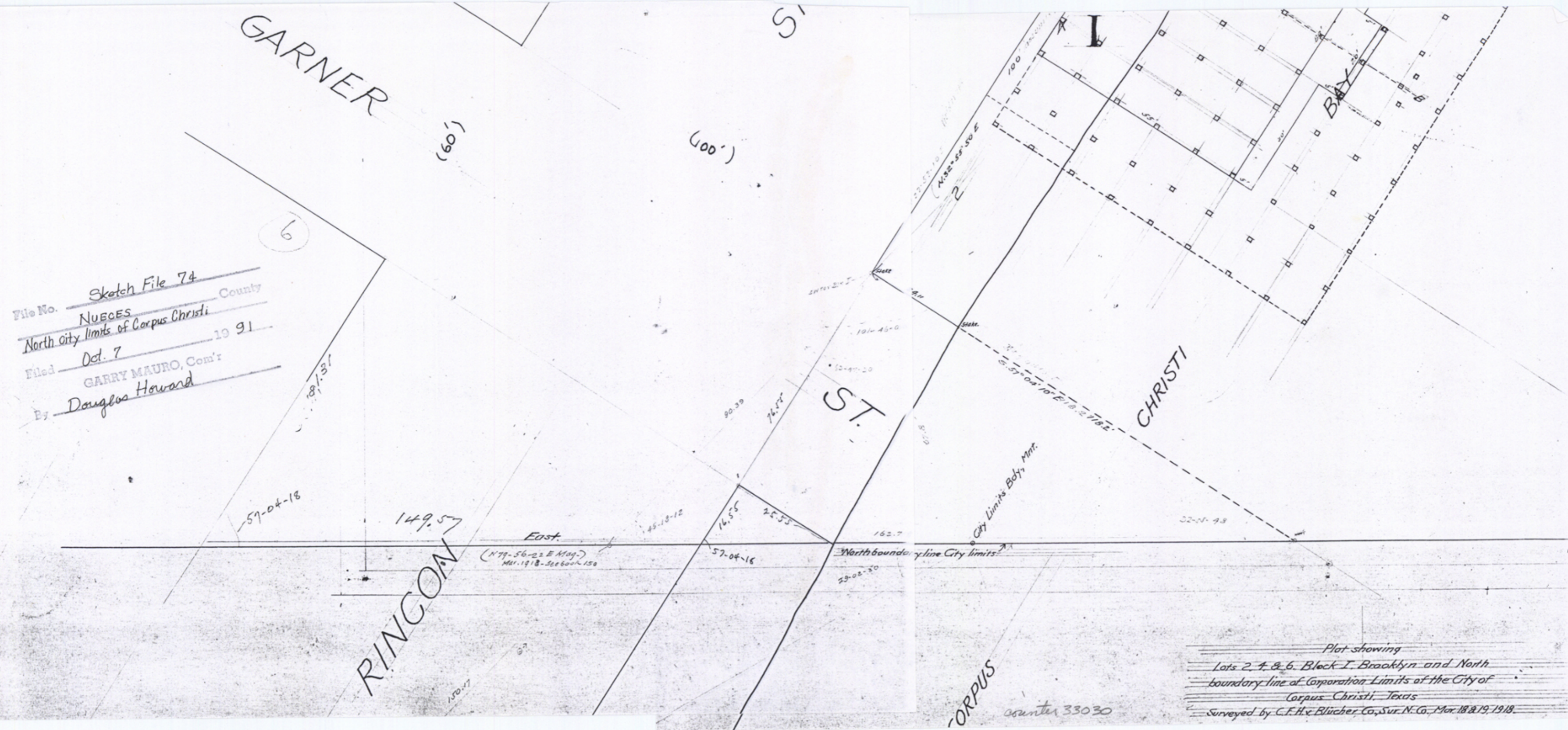
ALTA

VISTA

REEF

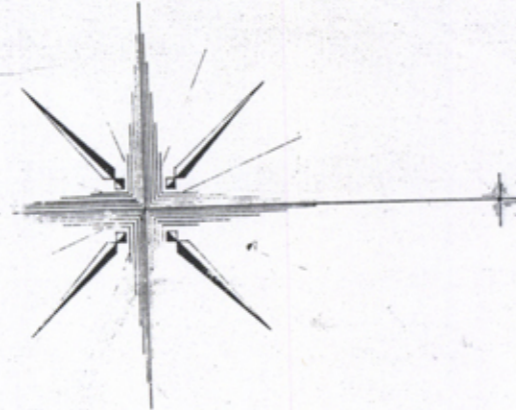
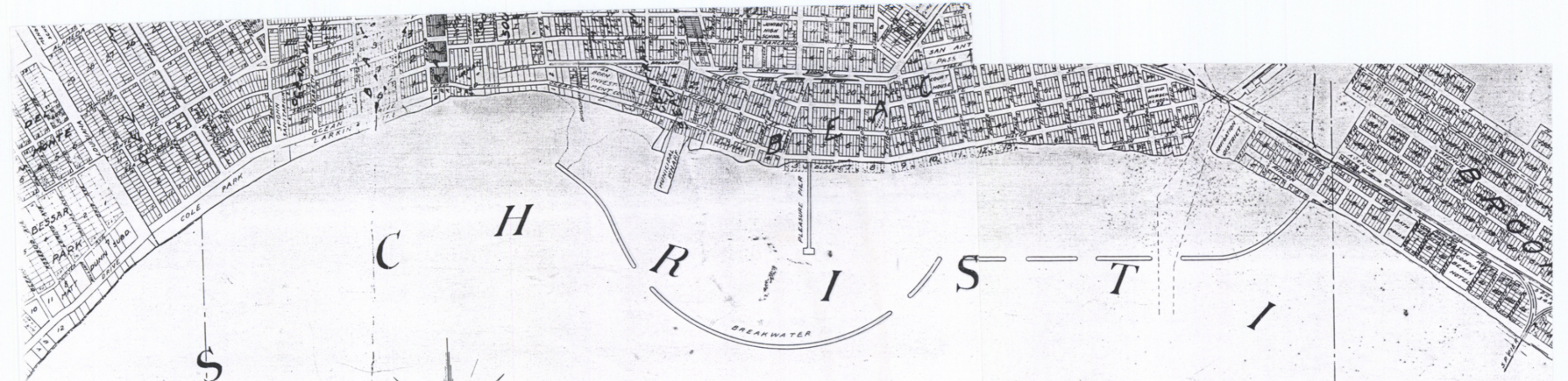
counter 33029

File No. Sketch File 74
NUCES County
 North city limits of Corpus Christi
 Filed Oct. 7 19 91
 By GARRY MAURO, Com'r
Douglas Howard



Plot showing
 Lots 2, 4, & 6, Block I, Brooklyn and North
 boundary line of Corporation Limits of the City of
 Corpus Christi, Texas
 Surveyed by C.F.H. & Blücher Co., Sur. N. Co., Mar. 18 & 19, 1918.

counter 33030



File No. Sketch File 74
Nueces County
 North city limits of Corpus Christi
 Filed 10-7 19 91
 GARRY MAURO, Com'r
 By Douglas Howard

Corpus Christi

MEXAS

1938

OLD CITY LIMITS

CITY LIMITS