

757



OFFICE OF

Star Mercantile Company.

GROCERIES, FLOUR AND FEED,
WHOLESALE AND RETAIL.

E. T. GUYMON, Manager.

Guymon, Okla., March 4 1903

Hon J J Terrell
Austin Tex
Dear Sir:-

Your letter of 16th ult. received with detailed explanations of surveys in Ochiltree Co. and with map enclosed for which I thank you very much. A copy of your letter to W A Ellis Feb 21st is also received and with the information given we think we can get the settlers over in Ochiltree Co. corrected up

Yours very truly
E T Guymon
Special Deputy Surveyor

(Orig)

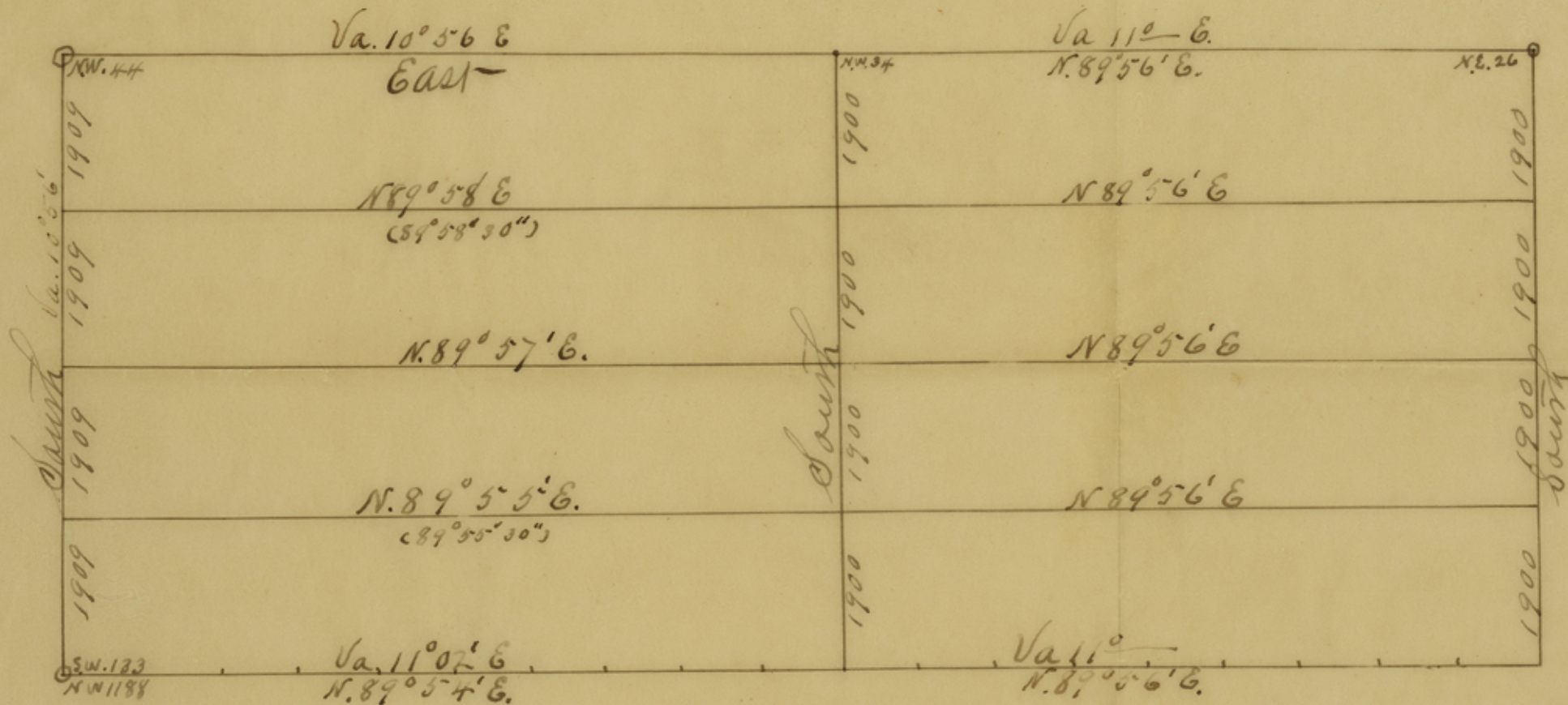
3/7/03

See Sketch & explanation in SF. 277
6/26/03
counter 33/68

Referred to Mr.
Evans R.

3/9/03

Hutchins



Scale E. - W. $\frac{1}{2}$ in. = 1 mi
 Scale N. - S. 1 in. = 1 mi

Variations

counter 331705 #17.2.00 201100

Report of Resurvey of Block 10
Hawston Tap and Brazoria R.R.

F. C. James Dept Dist Sur.

In beginning the work July 10th 1905 I took
my work of Aug. 1904 which record shows as follows.

I ran the State line as surveyed by W. D. Twichel
in 1897 and marked by mile stones on the N. line of
Ochiltree County. Beginning at his 15th mile stone
I ran E. 3 miles to the 12th mi stone & found a S. of
this line to be, by my needle, 11° 05' E.

From the 14th mile stone I ran west 406 or
and S. 894 ors from which a circular md 20 ft dia.
(50 ft - to outside of trench) and 4 ft high brs N. 131 ors
or 537 ors W. of said 14th mile stone.

Believing the N. line of Block 10 to have a less
Va. than the State line at this place I set my
my Transit - at Va 10° 56' E. and ran E. from
the large md (temporarily marking the miles) for 10
miles and 537 ors from which the 4th mi. stone brs
N. 942 ors W. 3 ors. At 10 miles and about 1000 ors

I passed over a 4 pit cor, of about 2 yrs standing,
which I presumed to be for Blk 2, P. T. At 14 mi

537 ors the N. E. cor. Co. brs N. 960 ors W. 1 or.

At 19 mi. 283 1/2 ors I found a cir md, 8 ft dia.
N. 19 8/10 ors.

In searching for any other md or mark
which might be a true N. W. cor. 25, I went
E. 254 ors (19 mi. 537 ors) & found I was east of N. Kiowa
on a firm soil and above high water.

I searched for 100 ors around & could find

Twichels
State line
Va 11° 05' E

14th mi stone
S 894 ors
W 537 ors
large md

N. line Blk
10
Va 10° 56' E

4th mi stone
N. 942 ors

N. E. Ochiltree Co.
N 960 ors

cir md 8 ft dia
N. 19 8/10 ors

2nd Report - Survey Block 10

nothing to indicate a land mark

Bearings at
N.W. 25-

At the Circular md I took the following bearings
Channel of M. Kiowa crs E. 203 vs same crs S. 150 vs
a cliff of yellow earth, 25-9- perpendicular, crs S 1/2 E
about 300 vs. A md. of stone on hill crs N 56 E
about 3/4 mi A north end of hill crs N 57 1/2 E. about 1 1/4 mi.

connections
Blk 43 & 4
state line

Tracing, by connections made by W.D. Fitchel
between sur 1079 Blk 43 and state line at N.W. Lipscomb Co.,
being 7 mi 960 vs, there is a fraction over 4
miles intervening between the resurvey of Blk 43
and the survey of the P.F.S. along state line I
accept my line run from N.W. 44 to N.W. 34
as a true line (Coinciding with S. line P.F.S. at N. line
of 34) I then returned to N.W. 34 and

Excess 283 1/2
Proved

proving the 283 1/2 vs excess between NW 25 and
N.W. 44 to the several lines of sections N.W. I set-

N.W. 34
10 mi 149 1/3 vs
N.W. 37 + 104 4/10
NW 39 + 74 3/4
N.W. 41 + 44 8/10
N.W. 42 + 30
NW 43 + 15

my N.W. cor 34 E 149 1/3 vs md 4 pits for cor
At 7 mi I set - NW cor 37 E 104 4/10 vs md 7 pits
At 5 mi I set - NW cor 39 E 74 3/4 vs md 8 pits
At 3 mi I set - NW cor 41 E 44 8/10 vs md 7 pits
At 2 mi I set - N.W. cor 42 E 30 vs stone md 4 pits
At 1 mi I set - NW cor 43 E 15 vs md 4 pits

To complete the work of resurvey of Blk 10
from N.W. 25 to N.W. 44 I began on July 10th 1905

N. line Blk 10
Va 10° 56'
4 mi. 36 vs

at N.W. cor 44 as indicated by large md, and at
right-angles to my line as heretofore run I
ran S. 4 mi. 36 vs falling inside of a md 10 ft
dia. as called for in the Joe L Long's notes
counter 33172

324

Report Survey Block 10

in resurvey of Blk 43, H. & T.C.R.R.

I then turned E and at 1915 vrs set mark for S.W. 134, at 1973 vrs a 4 pit cor (one pit destroyed by fence) vrs N. 2 1/2 vrs the N.E. 1188.

Taking my ba from this cor. which indicates 11° 01' I set at N.E. 1188 and set the temporary S.W. 134 N. 58 vrs.

Keeping my ba 11° 01' E and setting temporary cor
I ran E: At 1973 vrs I found the N.E. 1187
at 1970 vrs the N.E. 1186
at 1973 vrs the N.E. 1185.

The bearings as given by Long "a windmill vrs
S 91° 26' W" were found true. The house called for
has been removed or destroyed.

At 3 miles 52 vrs I shot I found a cor. but it was
destroyed by fencing of inguards, but at 4 mi 101 vrs
I found a distinct 4 pit cor 4 vrs N. of my line
From this 4 pit cor I ran S. 1903 vrs I found
another distinct 4 pit cor. which satisfied me I
was at N.E. 1181

At 2 mi 46 vrs a distinct 4 pit cor N. 8 vrs
At 1907 vrs distinct 4 pit cor N. 8 vrs
At 1907 vrs distinct 4 pit cor N. 8 vrs

At 2 mi 9 vrs a cor partly destroyed by fencing N 7 vrs
At 2 mi 55 vrs a distinct 4 pit cor N 4 vrs
At 2 mi 50 vrs a pile of stone newly erected in an old
4 pit cor which is on my line

At 1 mi 26 vrs a stone 4 pit N 1 vrs
counter 33173

NE 1188
1973 vrs

NE 1187
1973 vrs

NE 1186
1970 vrs

NE 1185
1973 vrs

NE 1181
4 mi 101 vrs

NE 1179
2 mi 46 vrs

NE 1178

NE 1177

NE 1175

NE 1173

N.E. 1171

NE 1170

4¹¹

Report of Survey Block 10

N.W. 15-0 Co
 N.W. 25
 N 37 mi 1898 or
 (Va 10° 56')

Returning on my line to 19 mi 283¹/₂ or
 from N.W. 1188 I ran N. (Va 1801) and at 3 mi 1898 or
 the N.W. 25 to E 10 or. Should I have run
 this line at Va 10° 56' (parallel to West-line) I would
 have fallen 1 or E. of N.W. 25

Accept the measurement of the S. line as correct
 and close this line at Va 10° 56' E making
 corners equidistant.

N.W. 26
 1913 or

I then closed the line from N.W. 25 to N.W. 34
 by a line run at 11° and at 1913 or I passed
 over an old 3 pit cor (Pits West East and South)
 which accept as N.W. cor. 26.

N.E. O. Co.
 944 or N

At 4 mi 1641 or I was 944 or E. of the N.W.
 cor. Lipscomb Co.

N.W. 34
 20 or short

At N.W. 34 my distance was 9 miles 131 or and
 my falling 4 or S. (made no correction)

From N.W. 34 I ran W. establishing the vacant
 corners.

After establishing the South corners to correspond
 with Va. of N. line Blk 43 (since Blk 10 at its narrowest
 place has its 4 miles width) I began at N.E. 114
 and ran W. to bisect the Block and at 7 mi and
 12 mi I chained the width to determine my line
 and find it a true line.

All mds are 3 ft high 4 feet base
 all pits are 20 x 24 x 6 inches

Respectfully Submitted,

James D. Dickerson

Ochiltree County
Sketch file no. 2.

2

Report of resurvey of
sections 25 to 64 and
113 to 152 in Block 10,
H. T. B. Ry. Co. and
S. P. Ry. Co. in Lipscomb
and Ochiltree counties by
T. O. James dep. Dist.
Surveyor.

Filed Sept. 27th 1905.

John J. Farrell
Commissioner

See sketch filed with
this.

Ochiltree Co 2.

T O James SK. & Report of re-
Survey sundry sections in Blk
10, H. T. & B. Ry Co., & S. P. RR Co.
in Ochiltree & Lipscomb Coun-
ties.

Filed Sep. 27, 1905.

15
19
35
15-5
85



Original map
See report of James
Dickers on Dist. Sur.
file No. 5

1010

Scale 1900 vrs 1 inch
T.O. James.

H O U S T O N T A P & B R A Z O R I A
B L O C K 1 0

Ochiltree Co. Sketch No. 2.

See report of T.O. James
Dist. Dir. Sur. approved by
Jas S. Dickerson Dist. Sur.
filed with this sketch.

Filed September 27th 1905.

John J. Ferrell
Commissioner

COUNTY 4 AUGUST