

Jimmie Nail & Co.**LAND SURVEYORS**

Robert E. Keys, President,



4131 S.W. 45th Ave

Amarillo, Texas 79109

(806) 352-1782

MARCH 26, 1990

THE HONORABLE GARRY MAURO
 GENERAL LAND OFFICE COMMISSIONER
 GENERAL LAND OFFICE
 1900 NORTH CONGRESS
 STEPHEN F. AUSTIN BUILDING
 AUSTIN, TEXAS 78701

File No. Sketch File 12
Ochiltree County
W $\frac{1}{2}$ + NE $\frac{1}{4}$ & SE $\frac{1}{4}$ Sect. 492, Blk. 43, H.T.C. Ry. Co.
 Filed March 17 19 90
 GARRY MAURO, Com'r
 By Douglas Howard
 See Plat in 39664, 56935

S U R V E Y R E P O R T

THIS IS A REPORT OF A SURVEY PREPARED OF THE WEST HALF AND THE NORTHEAST QUARTER COMBINED AND OF THE SOUTHEAST QUARTER OF SECTION 492, BLOCK 43 OF THE HOUSTON & TEXAS CENTRAL RAILROAD COMPANY (H. & T. C. RR. CO.) SURVEY, OCHILTREE COUNTY, TEXAS, SITUATED ABOUT 14.3 MILES S. 29° 15' E. OF PERRYTON, TEXAS; ORDERED BY BILL WATERS, ATTORNEY FOR PATRICIA ANN YOUNGBLOOD. THE WORK WAS ORDERED ON NOVEMBER 6TH, 1989 AND A WORKING SKETCH OF SURVEYS WITHIN A 2 MILE AREA SURROUNDING SAID SECTION 492 WAS ORDERED FROM THE GENERAL LAND OFFICE ON DECEMBER 4, 1989. THE WORKING SKETCH WAS COMPILED AND DRAWN BY J. KILPATRICK AND RECEIVED BY US, ON JANUARY 16, 1990. THE FIELD WORK WAS PERFORMED JANUARY 22ND AND 23RD AND FEBRUARY 5TH, 1990.

THE ORIGINAL SURVEYS OF SAID BLOCK 43, IN THE VICINITY OF SECTION 492 WERE MADE BY SURVEYOR, J.H. DINKINS ON OCTOBER 2ND, 1873. CONCLUDING FROM THE FOLLOWING FACTS THAT:

- 1.) THERE WERE NO PASSING CALLS STATED IN SURVEYOR DINKINS' FIELD NOTES,
- 2.) THE TYPE OF MONUMENTS CALLED FOR WERE ALL EARTHEN MOUNDS,
- 3.) ALL OF THE SURVEYS IN THE VICINITY OF SECTION 492 WERE SURVEYED ON THE SAME DATE AND,
- 4.) ALL SECTIONS ARE CALLED TO BE 1900 VARAS SQUARE - NORTH, SOUTH, EAST AND WEST.

I BELIEVE THAT HE CONSTRUCTED THESE SURVEYS IN THE OFFICE, FROM FIELD NOTES OF THE ADJOINING BLOCKS.

COMMISSIONER GARRY MAURO
MARCH 26, 1990
PAGE TWO

THE NEXT SURVEYOR OF RECORD IN THIS AREA WAS JOE L. LONG IN JULY AND AUGUST, 1888. SURVEYOR LONG RESURVEYED DINKINS' ORIGINAL SURVEYS IN THIS AREA OF SAID BLOCK 43. AS PER THE ABOVE STATEMENT IN REFERENCE TO DINKINS' SURVEYS, PERHAPS SURVEYOR LONG WAS ACTUALLY THE FIRST TO SURVEY THIS BLOCK ON THE GROUND. WE RECOVERED A 1-1/4 INCH IRON PIPE IN A ROCK MOUND AT THE SOUTHWEST CORNER OF SAID SECTION 567 (SEE EXHIBIT "A" - PICTURE 1). SURVEYOR LONG CALLED FOR A ROCK MOUND WITH A 14 INCH DIAMETER ELM TREE BEARING, N.85°10'W., 102 VARAS FROM IT, AT THIS SECTION CORNER. WE MEASURED N.85°40'W., 102.3 VARAS TO A 28 INCH DIAMETER, DEAD ELM TREE FROM SAID IRON PIPE (SEE EXHIBIT "A" - PICTURE 2).

THE NEXT SURVEYOR OF RECORD IN THIS AREA WAS RUPERT C. ALLEN FROM APPROXIMATELY JULY, 1926 THROUGH MAY, 1952. SURVEYOR ALLEN SURVEYED SECTIONS 404, 405, 406, 475, 476, 477, 478, 479, 490, 493, 494, 566, 578, AND 580 OF SAID BLOCK 43. A 2 INCH IRON PIPE CALLED TO BE SET IN SURVEYOR LONG'S ROCK MOUND BY SURVEYOR ALLEN WAS FOUND AT THE NORTHWEST CORNER OF SAID SECTION 493, BEING THE COMMON CORNER OF SECTIONS 492, 493, 564 AND 565 OF SAID BLOCK NO.43. NO STONES OR ROCK MOUNDS COULD BE LOCATED AT THIS CORNER FROM WHENCE A FENCE CORNER OF A NORTH-SOUTH AND EAST-WEST FENCE BEARS, NORTH, 0.07 VARAS AND WEST, 0.22 VARAS (SEE EXHIBIT "B" - PICTURE 1). WE RECOVERED A 3/4 INCH GALVANIZED IRON PIPE, IN GOOD CONDITION, ON THE SOUTH SIDE OF NORTHUP CREEK, AT THE NORTHWEST CORNER OF SECTION 476, AS SET BY SURVEYOR ALLEN. HOWEVER, NO EVIDENCE OF A STONE MOUND, AS CALLED FOR BY SURVEYOR ALLEN, COULD BE FOUND AROUND THIS IRON PIPE (SEE EXHIBIT "B" - PICTURE 2 AND EXHIBIT "C" - PICTURE 1). FROM THIS 3/4 INCH GALVANIZED IRON PIPE, A LARGE ROCK WITH AN "X" CHISELED IN IT BEARS, S. 89° 35'03"E., 1935.86 VARAS. SURVEYOR ALLEN CALLS FOR A ROCK MOUND, AS SET BY SURVEYOR LONG AT THE COMMON CORNER OF SECTIONS 475, 476, 493 AND 494 OF SAID BLOCK 43 TO BEAR EAST, 1948 VARAS FROM SAID 3/4 INCH GALVANIZED IRON PIPE (SEE EXHIBIT "C" - PICTURE 2). WE ALSO RECOVERED A 2 INCH IRON PIPE, AS SET BY SURVEYOR ALLEN, FOR THE COMMON CORNER OF SECTIONS 478, 479, 490 AND 491 OF SAID BLOCK 43, FROM WHENCE A FENCE CORNER OF AN EAST-WEST AND SOUTH FENCE BEARS, NORTH, 15.12 VARAS (SEE EXHIBIT "D" - PICTURES 1 & 2). WE SEARCHED FOR SURVEYOR ALLEN'S 1-1/2 INCH IRON PIPE SET IN A ROCK MOUND AT THE COMMON CORNER OF SECTIONS 493, 494, 563 AND 564 OF SAID BLOCK 43, BUT DID NOT LOCATE IT. A SEARCH WAS MADE AT THE COMMON CORNER OF SECTIONS 564, 565, 580 AND 581 OF SAID BLOCK 43 FOR SURVEYOR ALLEN'S ORIGINAL STONE MOUND AND AGAIN, THIS CORNER COULD NOT BE LOCATED. AN IRON PIPE SET IN A STONE MOUND BY SURVEYOR ALLEN AT THE COMMON CORNER OF SECTIONS 404, 405, 476 AND 477 OF SAID BLOCK 43 ALSO WAS SEARCHED FOR AND NOT FOUND.

COMMISSIONER GARRY MAURO
MARCH 26, 1990
PAGE THREE

THE NEXT SURVEYOR OF RECORD IN THIS AREA WAS ROBERT H. HOLT FROM APPROXIMATELY JANUARY, 1961 TO MARCH, 1963. SURVEYOR HOLT SURVEYED SECTIONS 403 AND 491 AND A PORTION OF SECTION 404 OF SAID BLOCK 43. AS STATED ABOVE, A 2 INCH IRON PIPE SET BY SURVEYOR ALLEN WAS RECOVERED AS CALLED TO BE FOUND AND STAMPED "SW 491", ON ITS EAST SIDE, BY SURVEYOR HOLT (SEE EXHIBIT "D" - PICTURES 1 & 2). WE RECOVERED A 1-1/4 INCH IRON PIPE IN A ROCK MOUND, AS NOTED PREVIOUSLY, AT THE NORTHWEST CORNER OF SAID SECTION 491. SURVEYOR HOLT CALLED FOR THE IRON PIPE TO BE MARKED "NW 491", HOWEVER, NO MARKINGS WERE FOUND ON THIS IRON PIPE. SURVEYOR HOLT ALSO CALLED FOR A 24 INCH DIAMETER ELM TREE TO BEAR, N.85°05'W., 102 VARAS FROM THIS 1-1/4 INCH IRON PIPE (SEE EXHIBIT "A" - PICTURES 1 & 2). NEXT, WE RECOVERED A 1-1/4 INCH IRON PIPE AT THE NORTHEAST CORNER OF SECTION 491. SURVEYOR HOLT CALLED FOR THE IRON PIPE TO BE MARKED "NE 491", AGAIN, NO MARKINGS WERE FOUND ON THIS PIPE (SEE EXHIBIT "E" - PICTURE 1). NEXT, WE RECOVERED A 1-1/4 INCH IRON PIPE AT THE SOUTHEAST CORNER OF SAID SECTION 491. SURVEYOR HOLT CALLED FOR THE PIPE TO BE MARKED "SE 491" AGAIN, NO MARKINGS WERE FOUND ON THIS IRON PIPE. HE ALSO CALLED FOR A 2 INCH BY 2 INCH SHAFT AGAINST THIS IRON PIPE; IT WAS NOT FOUND (SEE EXHIBIT "E" - PICTURE 2). WE RECOVERED A 1 INCH IRON PIPE SURROUNDED BY SEVERAL STONES AT THE NORTHEAST CORNER OF SAID SECTION 403. SURVEYOR HOLT SET A 1 INCH IRON PIPE IN SURVEYOR LONG'S ROCK MOUND AT THIS CORNER AND SAME BEING THE COMMON CORNER OF SECTIONS 403, 404, 477 AND 478 OF SAID BLOCK 43 (SEE EXHIBIT "F" - PICTURE 1). A 1 INCH IRON PIPE AND A ROCK, FOUND AT THE NORTHEAST CORNER OF THE PATENTED WESTERLY 240.6 ACRES OF SAID SECTION 404 BEARS, N.89°39'12"E., 996.33 VARAS FROM THE NORTHEAST CORNER OF SAID SECTION 403. SURVEYOR HOLT CALLED FOR THIS IRON PIPE (SEE EXHIBIT "F" - PICTURE 2) TO BEAR N.89°32'E., 1001.6 VARAS FROM SAID NORTHWEST CORNER OF SECTION 404.

AT THE SECTIONS CORNERS WHERE SURVEYORS ALLEN AND HOLT SET IRON PIPES IN SURVEYOR LONG'S PILE OF STONES OR ROCK MOUNDS OR IN THEIR OWN ROCK MOUNDS, THE MONUMENTATION STILL REMAINS INTACT. HOWEVER, AT THE CORNERS WHERE THE SURVEYORS SET ONLY A ROCK MOUND OR A STONE, THE EVIDENCE OF SUCH, HAS BEEN DESTROYED MOST LIKELY BY VARIOUS FENCE BUILDERS, WHO DID NOT RECOGNIZE ITS IMPORTANCE OR VALUE. EVIDENCE INDICATES THAT ALL OF THE SURVEYORS LISTED ABOVE HAD DIFFICULTY MEASURING THE ROUGH TERRAIN IN THE WOLF CREEK AREA. IN THESE AREAS, THE DISTANCES CALLED FOR WERE CONSIDERABLY SHORT, WHICH IS UNDERSTANDABLE WITH THE EQUIPMENT OF THE TIME AND THE EXISTING ACCUMULATIVE ELEVATION DIFFERENCES BETWEEN THE SURVEY CORNERS.

COMMISSIONER GARRY MAURO
 MARCH 26, 1990
 PAGE FOUR

THE CORNERS OF SAID SECTION 491, AS CALLED FOR BY SURVEYOR HOLT AND FOUND AS STATED ABOVE, RESULTED IN THE FOLLOWING "CALLED" VERSUS "MEASURED" COMPARISONS:

NORTH LINE	- 1948.5 VRS. CALL	VERSUS	1949.76 VRS. MEAS.
EAST LINE	- 1909.0 VRS. CALL	VERSUS	1908.61 VRS. MEAS.
SOUTH LINE	- 1937.0 VRS. CALL	VERSUS	1937.44 VRS. MEAS.
WEST LINE	- 1898.6 VRS. CALL	VERSUS	1898.63 VRS. MEAS.
N.W. CORNER	- 89°47' CALL	VERSUS	89°44'40" MEAS.
N.E. CORNER	- 89°52' CALL	VERSUS	89°53'01" MEAS.
S.E. CORNER	- 89°49' CALL	VERSUS	89°49'16" MEAS.
S.W. CORNER	- 90°32' CALL	VERSUS	90°33'03" MEAS.

THE RECONSTRUCTION OF SAID SECTION 492 WAS BASED UPON THE FOUND AND ACCEPTED CORNERS OF THE ADJOINING SURVEYS, AS CALLED FOR BY SURVEYORS JOE L. LONG, RUPERT C. ALLEN AND ROBERT H. HOLT AND ARE AS FOLLOWS:

N.W. CORNER	THE 1-1/4 INCH IRON PIPE SET BY SURVEYOR HOLT AT THE NORTHEAST CORNER OF SAID SECTION 491.
N.E. CORNER	THE 2 INCH IRON PIPE SET BY SURVEYOR ALLEN AT THE NORTHWEST CORNER OF SAID SECTION 493.
S.E. CORNER	THE 3/4 INCH GALVANIZED IRON PIPE SET BY SURVEYOR ALLEN AT THE NORTHWEST CORNER OF SAID SECTION 476.
S.W. CORNER	THE 1-1/4 INCH IRON PIPE SET BY SURVEYOR HOLT AT THE SOUTHEAST CORNER OF SAID SECTION 491.

THE COURSES OF SECTION 492 ARE AS FOLLOWS:

NORTH LINE	S.89°16'02"E., 1943.52 VARAS (1933 VARAS CALL)
EAST LINE	S.00°18'37"W., 1895.69 VARAS (1914 VARAS CALL)
SOUTH LINE	N.89°38'52"W., 1940.87 VARAS (1948 VARAS CALL)
WEST LINE	N.00°13'56"E., 1908.61 VARAS (1909 VARAS CALL)

YIELDING 654.39 ACRES TOTAL.

EXCEPT FOR THE NORTH LINE, THE ABOVE CALLED DISTANCES ARE FROM ADJOINING SURVEYS OF EITHER SURVEYOR HOLT'S OR ALLEN'S. SURVEYOR LONG CALLED FOR SECTION 492 TO BE 1933 VARAS EAST - WEST AND 1905 VARAS NORTH - SOUTH.

COMMISSIONER GARRY MAURO
 MARCH 26, 1990
 PAGE FIVE

WITH THE PERIMETER ESTABLISHED, SECTION 492 WAS QUARTERED AS FOLLOWS:

- 1.) WE SET A 3/4 INCH IRON PIPE STAMPED "NW-COR NW-1/4 SEC-492", HALFWAY BETWEEN THE 1-1/4 INCH IRON PIPE, FOUND AT THE NORTHWEST CORNER AND THE 2 INCH IRON PIPE, FOUND AT THE NORTHEAST CORNER OF SAID SECTION 492. IT FELL ON THE WEST SIDE OF A DRAW AND 0.36 VARAS SOUTH OF AN EAST-WEST FENCE.
- 2.) WE SET A 3/4 INCH IRON PIPE STAMPED "SE-COR NE-1/4 SEC-492", HALFWAY BETWEEN THE 2 INCH IRON PIPE, FOUND AT THE NORTHEAST CORNER OF THE 3/4 INCH GALVANIZED IRON PIPE, FOUND AT THE SOUTHEAST CORNER OF SAID SECTION 492. IT FELL ON THE NORTH SIDE OF A DRAW AND 2.95 VARAS WEST OF A NORTH-SOUTH FENCE.
- 3.) WE SET A 3/4 INCH IRON PIPE STAMPED "SE-COR SW-1/4 SEC-492", HALFWAY BETWEEN THE 3/4 INCH GALVANIZED IRON PIPE, FOUND AT THE SOUTHEAST CORNER AND THE 1-1/4 INCH IRON PIPE, FOUND AT THE SOUTHWEST CORNER OF SAID SECTION 492. IT FELL IN A RELATIVELY FLAT AREA, 1.4 VARAS NORTH OF AN EAST-WEST FENCE. THE WEST SIDE OF THE CENTER POLE ON A CATTLE GUARD BEARS, EAST, 14.61 VARAS.
- 4.) WE SET A 3/4 INCH IRON PIPE STAMPED "SW-COR NE-1/4 SEC-492", HALFWAY BETWEEN THE 3/4 INCH IRON PIPE STAMPED "NW-COR NE-1/4 SEC-492" AND THE 3/4 INCH IRON PIPE STAMPED "SE-COR SW-1/4 SEC-492". THIS CORNER BEING THE CENTER OF SAID SECTION 492 AS DETERMINED BY INTERSECTING THE LINE WHICH CONNECTS THE MIDPOINTS OF THE EAST AND WEST SECTION LINES WITH THE LINE WHICH CONNECTS THE MIDPOINTS OF THE NORTH AND SOUTH SECTION LINES. IT FELL ON THE EAST SIDE OF A DRAW.

THE WEST HALF AND NORTHEAST QUARTER OF SECTION 492 COURSES ARE AS FOLLOWS:

NORTH LINE	S.89°16'02"E.,	1943.52 VARAS
NORTHERLY-EAST LINE	S.00°18'37"W.,	947.84 VARAS
EASTERLY-SOUTH LINE	N.89°27'26"W.,	971.09 VARAS
SOUTHERLY-EAST LINE	S.00°16'16"W.,	951.08 VARAS
SOUTH LINE	N.89°38'52"W.,	970.43 VARAS
WEST LINE	N.00°13'56"E.,	1908.61 VARAS

YIELDING 491.12 ACRES TOTAL

COMMISSIONER GARRY MAURO
MARCH 26, 1990
PAGE SIX

THE SOUTHEAST QUARTER OF SECTION 492 COURSES ARE AS FOLLOWS:

NORTH LINE	S.89°27'26"E.,	971.09 VARAS
EAST LINE	S.00°18'37"W.,	947.85 VARAS
SOUTH LINE	N.89°38'52"W.,	970.43 VARAS
WEST LINE	N.00°16'16"E.,	951.08 VARAS

YIELDING 163.26 ACRES TOTAL

IN CONNECTION WITH THIS REPORT, I AM ENCLOSING THE RECORDED FIELD NOTE DESCRIPTIONS OF THE WEST HALF AND NORTHEAST QUARTER COMBINED, AND OF THE SOUTHEAST QUARTER OF SAID SECTION 492. AN ATTACHED PLAT (EXHIBIT "A") DEPICTING THE ENTIRE SECTION AS PARTITIONED IS ATTACHED TO EACH SET OF FIELD NOTES.

RESPECTFULLY SUBMITTED,

Jimmie Natl
Mail
 JIMMIE NATL
 LICENSED STATE LAND SURVEYOR
 (ATTACHMENTS)




EXHIBIT "A"



PICTURE 1

LOOKING EAST AT A 1-1/4 INCH IRON PIPE AND STONE, FOUND AT A NORTH-SOUTH-EAST FENCE CORNER, THE COMMON CORNER OF SECTIONS 490-491-566-567 (N.W. COR. SEC. 491), BLOCK 43, H. & T.C. RR. CO. SURVEY, OCHILTREE COUNTY, TEXAS.



PICTURE 2

LOOKING WEST FROM THE COMMON CORNER OF SECTIONS 490-491-566-567, BLOCK 43, H. & T.C. RR. CO. SURVEY, OCHILTREE COUNTY, TEXAS, (AS PER PICTURE 1 ABOVE), TOWARD A 28 INCH DEAD ELM TREE THAT WAS REFERENCED BY SURVEYORS JOE LONG AND ROBERT H. HOLT.

EXHIBIT "B"



PICTURE 1

LOOKING NORTHEAST AT A 2 INCH IRON PIPE, FOUND AT A NORTH-SOUTH-EAST-WEST FENCE CORNER, THE COMMON CORNER OF SECTIONS 492-493-564-565 (N.E. COR. SEC. 492), BLOCK 43, H. & T.C. RR. CO. SURVEY, OCHILTREE COUNTY, TEXAS.



PICTURE 2

LOOKING NORTHWEST AT A 3/4 INCH GALVANIZED IRON PIPE, FOUND AT THE COMMON CORNER OF SECTIONS 476-477-492-493 (S.E. COR. SEC. 492), BLOCK 43, H. & T.C. RR. CO. SURVEY, OCHILTREE COUNTY, TEXAS.

EXHIBIT "C"



PICTURE 1

LOOKING NORTH, SHOWING OLD FENCE POSTS AROUND THE COMMON CORNER OF SECTIONS 476-477-492-493, BLOCK 43, H. & T.C. RR. CO. SURVEY, OCHILTREE COUNTY, TEXAS (AS PER PICTURE 2 OF EXHIBIT "B").



PICTURE 2

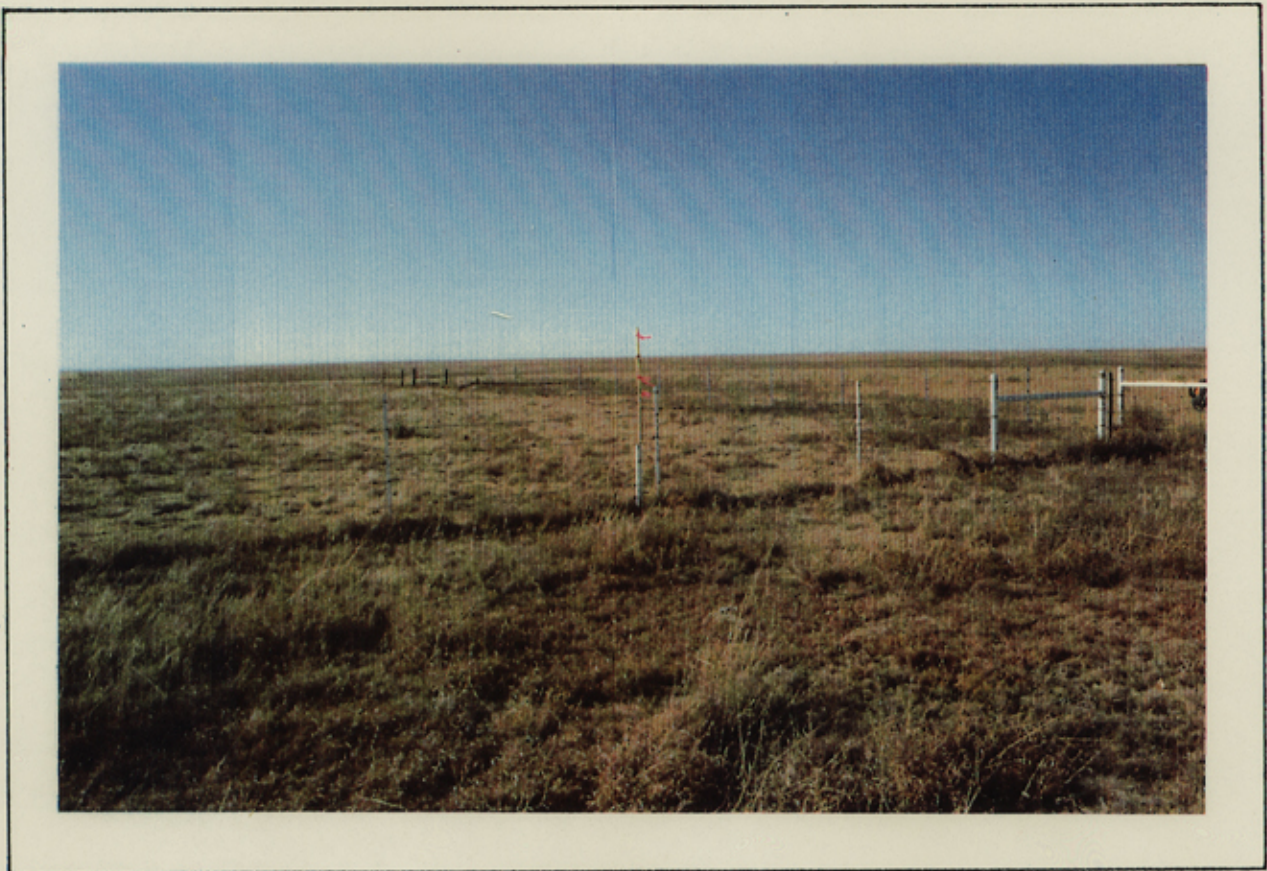
LOOKING NORTH AT A LARGE STONE MARKED "X", FOUND ON THE SOUTH SIDE OF A DRAW, IN AN EAST-WEST FENCE LINE, AT THE COMMON CORNER OF SECTIONS 475-476-493-494, BLOCK 43, H. & T.C. RR. CO. SURVEY, OCHILTREE COUNTY, TEXAS.

EXHIBIT "D"



PICTURE 1

LOOKING WESTERLY (CLOSE UP) AT A 2 INCH IRON PIPE STAMPED "SW 491", FOUND IN A NORTH-SOUTH FENCE LINE, AT THE COMMON CORNER OF SECTIONS 478-479-490-491, BLOCK 43, H.& T.C. RR. CO. SURVEY, OCHILTREE COUNTY, TEXAS.



PICTURE 2

LOOKING NORTHWESTERLY AT THE COMMON CORNER OF SECTIONS 478-479-490-491, BLOCK 43, H.& T.C. RR. CO. SURVEY, OCHILTREE COUNTY, TEXAS (AS PER PICTURE 1 ABOVE).

EXHIBIT "E"



PICTURE 1

LOOKING NORTH AT A 1-1/4 INCH IRON PIPE, FOUND AT A NORTH-SOUTH-EAST-WEST FENCE CORNER, THE COMMON CORNER OF SECTIONS 491-492-565-566 (N.W. COR. SEC. 492 & N.E. COR. SEC. 491), BLOCK 43, H. & T.C. RR. CO. SURVEY, OCHILTREE COUNTY, TEXAS.



PICTURE 2

LOOKING SOUTHWESTERLY AT A 1-1/4 INCH IRON PIPE, FOUND AT A NORTH-SOUTH-EAST-WEST FENCE CORNER, THE COMMON CORNER OF SECTIONS 477-478-491-492 (S.W. COR. SEC. 492 & S.E. COR. SEC. 491), BLOCK 43, H. & T.C. RR. CO. SURVEY, OCHILTREE COUNTY, TEXAS.

EXHIBIT "F"



PICTURE 1

LOOKING EAST AT A 1 INCH IRON PIPE AND STONES, FOUND AT A NORTH-EAST-WEST FENCE CORNER, THE COMMON CORNER OF SECTIONS 403-404-477-478, BLOCK 43, H. & T.C. RR. CO. SURVEY, OCHILTREE COUNTY, TEXAS.



PICTURE 2

LOOKING EAST AT A 1 INCH IRON PIPE AND STONE, FOUND AT THE NORTHEAST CORNER OF THE PATENTED WESTERLY 240.6 ACRES OF SECTION 404, BLOCK 43, H. & T.C. RR. CO. SURVEY, OCHILTREE COUNTY, TEXAS.