



WM. H. McDONALD
COMMISSIONER
GENERAL LAND OFFICE
AUSTIN, TEXAS

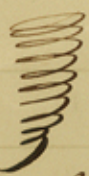
7

Ogleham Co

W S Mabry's sk & explanation con-
flicts with capitol leagues
Dated Jan. 16, 1885,
Filed Feb. 3, 1885,

counter 33236

State of Texas
County of Oldham



I N. D. Mabry Surveyor
Oldham county do hereby certify
that the sketch herewith attached
shows correctly the conflict of
the Capitol Reagues on the south
side of the Canadian River in
Oldham county, with Blocks B5
B6 & L C: that I have connected
the N.E. corner of Reague 304 with
the N.E. corner of survey no 43 Block
B5, and have also connected the
N.W. corner Reague 312 with the S.E.
corner of survey no 13 Blk L.C, and
have found the distances as
shown on this sketch -
witness my hand this 16th day
of Jan'y 1885 -

N. D. Mabry
Surveyor Oldham Land &c

7^o

attach this to the sketch
on the south side of
the River in Alabama
county-

1/16/85

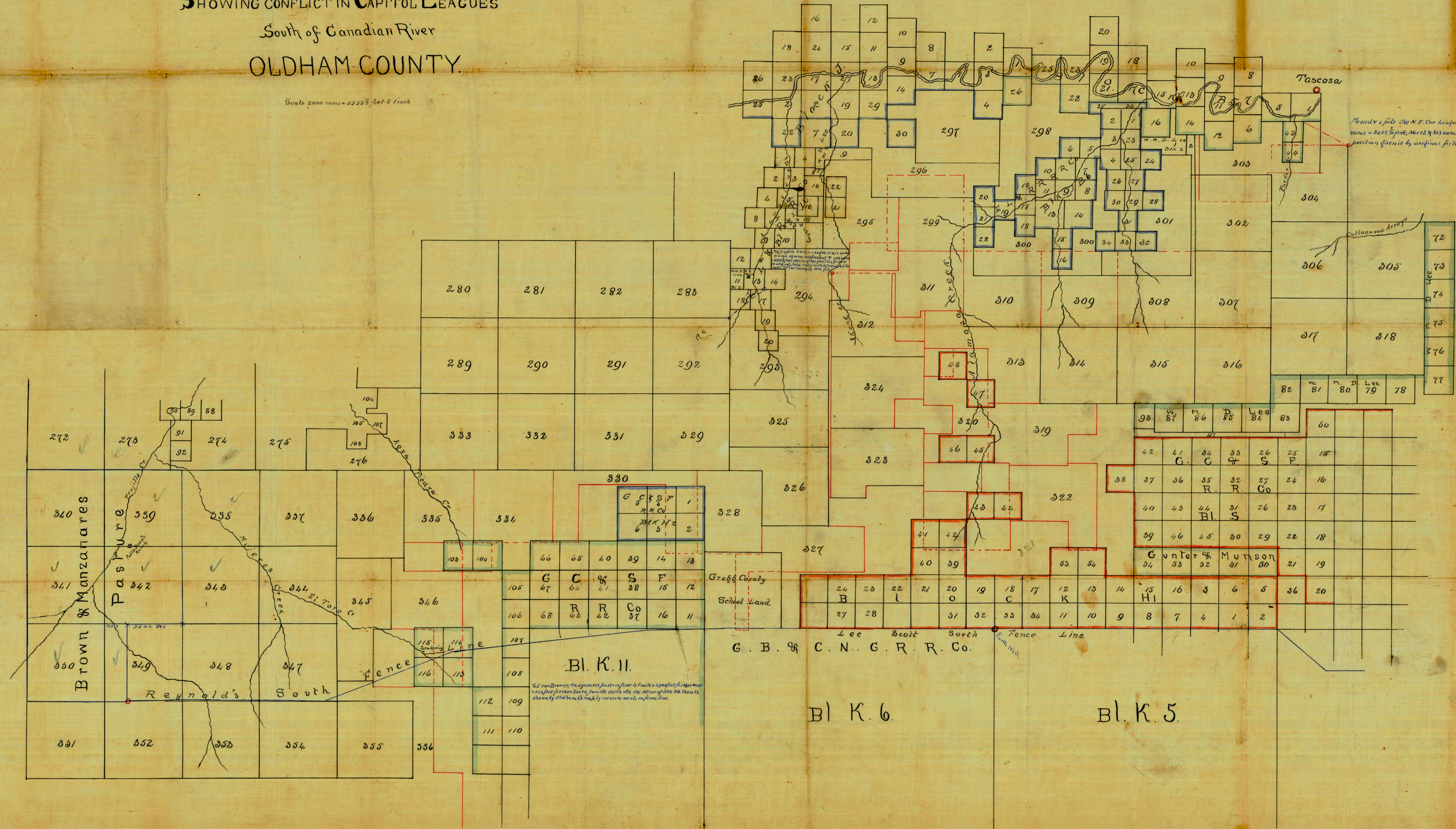
MAP

SHOWING CONFLICT IN CAPITOL LEAGUES

South of Canadian River
 OLDHAM COUNTY.

Scale 2000 yards = 55 1/2 feet to 1 inch

Handwritten notes:
 Tascosa
 1887
 1888
 1889



Handwritten note: Shows a pit the N.E. Cor. League 200. On the ground is 1822. 2000 = 5000 feet, North & 2000 = 1676 feet East of the position given by original field notes.

Small printed note: See also Brown's map of the same tract in 1822. It shows the same boundaries as this map. The boundaries shown by Oldham Co. maps by measure are in red ink.