



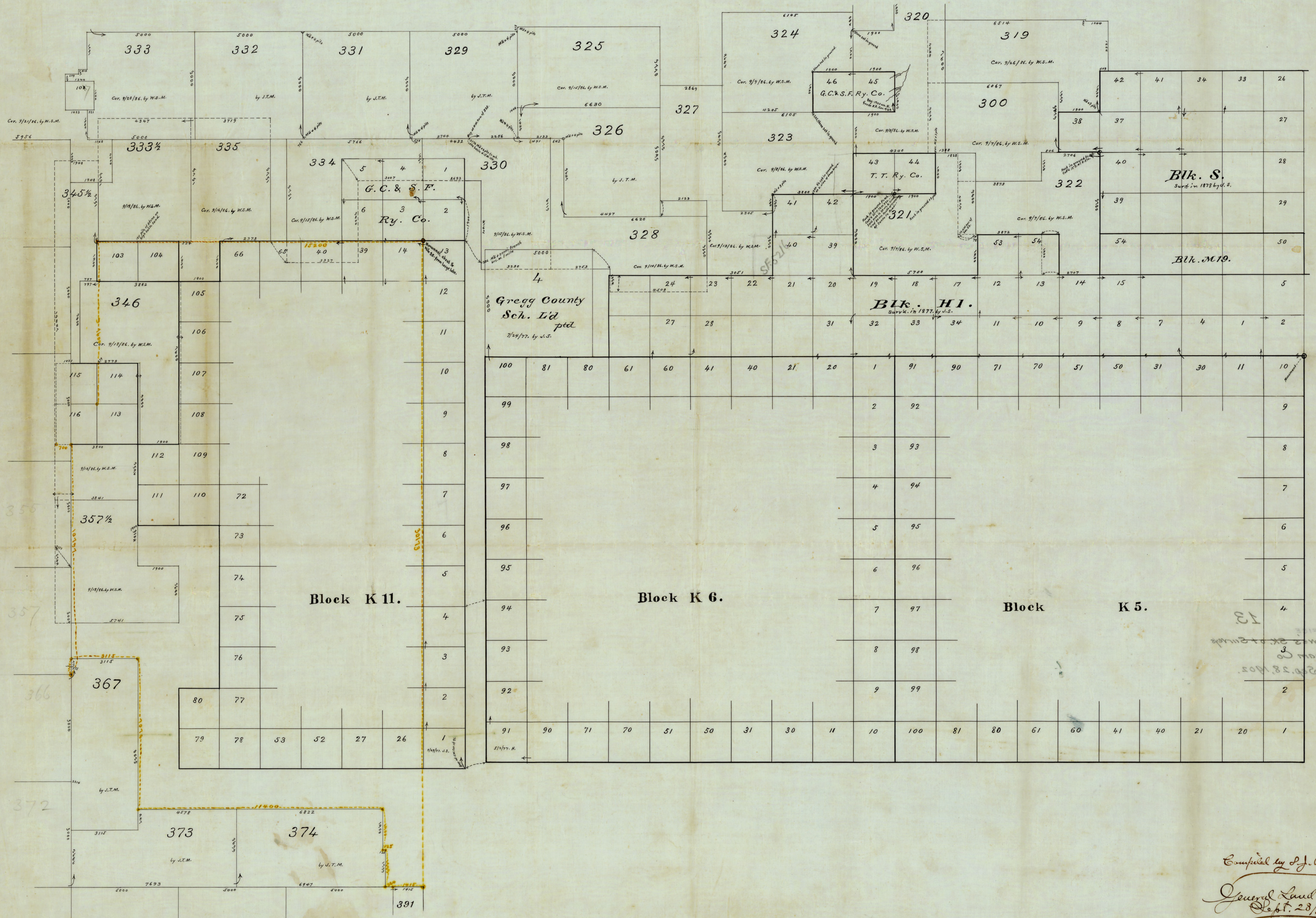
CAPITOL LAND RESERVATION

counter 33260

This sketch Received
 Oct. 31/02 from Co. Sur.
 Deaf Smith Co. G. R. Jowell
 E. van Kesteren
 Dftman

(See large map on shelf filed by W.S. Mabry)
 See large blue print by W.D. F. Wickell
 Dec. 14/88
 10/27/03
 B. and R.

See large map filed by W.S. Mabry



Compiled by J.J. Rowe
 General Land Office
 Sept. 28/02