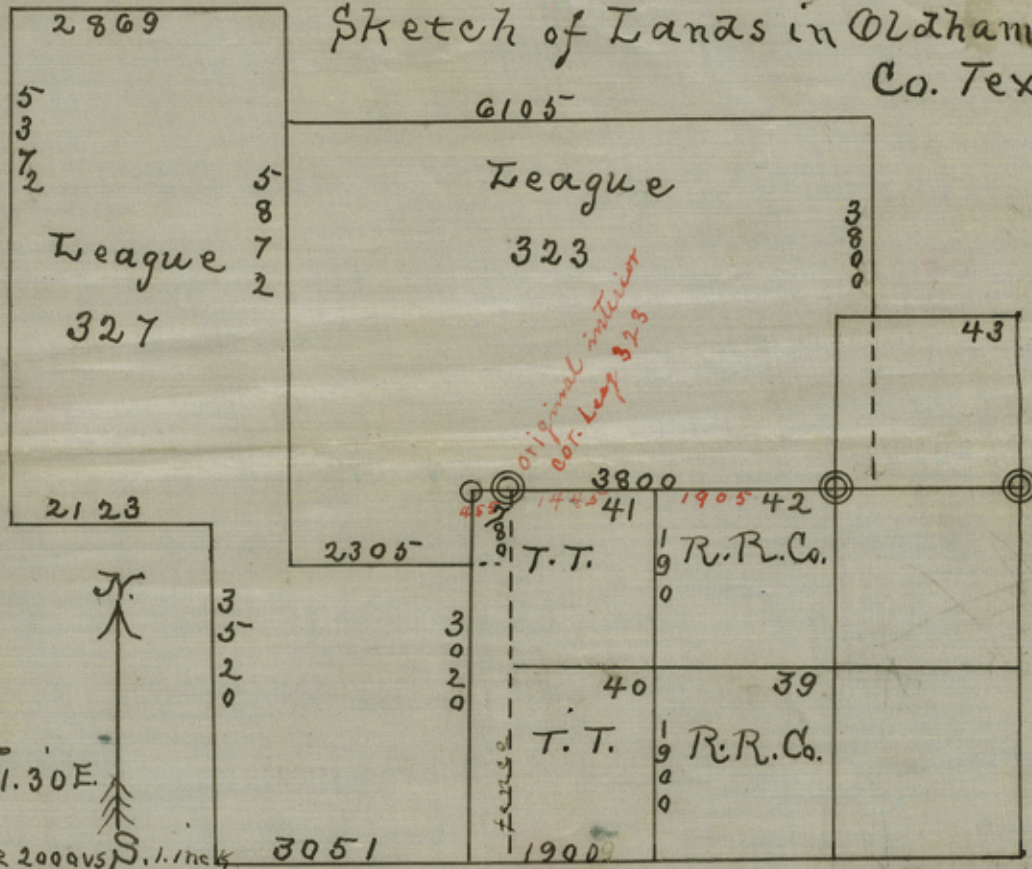


# Sketch of Lands in Oldham Co. Tex.



Scale 2000VS 1. inch

The above sketch represents the position of the lands as we find the old corners.

R. M. Kenney State sur.  
 A. D. Howren " "  
 E. F. Ball Jr Dep Sur Oldham Co

Oldham Co. Tex.

counter 33267

Emma L

Oct. 12<sup>th</sup> 1904

Mr E Van Rosenberg,  
Austin, Tx

Dear friend,

I wish to thank you for the description of the contrabution over my work in Oldham. your reply is clear and covers the facts in a masterly way. I am surprised that Messrs Howerin<sup>and</sup> Kenney should draw such a conclusion upon such facts. <sup>and</sup> this when they had not investigated the more important facts. I am sure you told it about right. Again thanking you I am  
yours truly  
W D Twichell

Your letter will end the matter.

EF

counter 33268



# General Land Office.

State of Texas.

Austin.

September 30, 1904.

JOHN J. TERRELL, COMMISSIONER.  
J. T. ROBISON, CHIEF CLERK.

Capt. A. S. Howren,  
State Surveyor,  
Amarillo, Texas.

Dear Sir:

Your favor of the 8th ult. was duly received, in shape of a statement and field notes of connecting line in Oldham county, signed by yourself and Mr. R. M. Kenney as State Surveyors, and by Mr. E. P. Batte, Special Deputy Surveyor Oldham county, affecting Capitol leagues Nos. 323 and 327 and the position of surveys Nos. 39, 40, 41, 42 and 43 in block H 1.

You ask the question "whether Capitol league No. 327 can be separated from survey No. 40, block H-1 so as to create a vacancy." In reply would say, yes, by not disturbing leagues 327 nor 323, but simply sliding sections 39 and 40 East from the original position of leagues Nos. 323 and 327.

From the original data by the contractor or locating surveyor, Mr. J. T. Munson, see blue print of his Oldham county map marked "A", filed with the field notes, whereon he represents league No. 327 to include the strip East of Gregg county school land survey No. 4, and West of surveys No. 25 and 26, block H-1, and that block H-1 connects and builds up from blocks K 5 and K 6, and K 6 to close up with block K-11, leaving no gap or strip between surveys 8, 15, and 9 and 14, block H-1.

League No. 323 (by Munson) calls to begin at a mound and four pits, the most Westerly N.W. corner of survey No. 321, thence North 3800 varas, &c., and at the end of the 5th course "North 780 vrs. to N.W. corner of survey No. 41, blk. H-1" no corner being described.

League No. 321 (by Munson) at its most Westerly N.W. corner calls for a "mound and four pits the N.E. cor. of sur. No. 42, blk. H 1. Blue print sketch marked "B" is a copy of a portion of map returned by District Surveyor W. S. Mabry December 14, 1886, together with corrected field notes for quite a number of the Capitol leagues, including leagues Nos. 323 and 327, whereon he indicates thus © as identifying the common corner of sections 37, 38 and 40, blk. S, and league No. 322, and the common corner of sections 43 and 44, blk. H-1, and the common corner of sections 2 and 3, and 13 and 14, blk. K-11, correcting the several leagues accordingly, creating a break in blk. H-1, of 807 vrs. <sup>in</sup> width between surveys 8, 15, and 9, 14, in said block, thereby sliding all the sections in said block West 740 varas and North 146 vrs., evidently intending to hold them to the common corner of sections 43 and 44 in said block, closing up the strip East of Gregg county school land survey No. 4, and creating a vacant strip of 146 varas wide between block H-1 and blocks K-5 and K-6.

Mr. Mabry represents blocks K5 and K6 simply by course and distance West, leaving a strip West of block K6 and East of block K-11 of 983 varas <sup>in</sup> width, holding and constructing K-11 from the old original common corner of 2 and 3 and 13 and 14, block K-11.

Mr. Mabry should have held block H-1 East to the old Monument at N.E. corner of block K-5, and sliding block H-1 East on South line of section 43, holding sections 43 and 44 to its old corner, thereby closing up the gap or strip of 807 vrs. between 8, 15, and 9, 14, blk. H-1, and should his theory be carried out as to the position of the Western portion of block H-1, then you must prorate the excess between

EF<sup>2</sup>

counter 33269



# General Land Office.

State of Texas.

Austin.

JOHN J. TERRELL, COMMISSIONER.  
J. T. ROBISON, CHIEF CLERK.

A.S.H.#2.

the N. E. corner of blk. K-5 and the original corner of 13 and 14, blk. K11, thereby closing up the strip of 983 varas.

I would state, from a talk I had recently with Capt. Mabry, he has not changed nor altered the length nor the original position of the lines of leagues No. 323, nor the calls or length of lines of the Eastern portion of league No. 327.

Blue print sketch marked "C" represents the several surveys as re-surveyed by Mr. W. D. Twichell, State Surveyor, under instruction from this office, to construct and resurvey block H-1 from the old monument at the N.E. corner of block K-5, thence West course and distance, closing on the North line of block K-5 and K6, and North to the North line of sections 39 and 40, sliding sections 41 and 42 West and extending the same South 2065 varas from the original common corner of sections 43 and 44. This 165 varas excess in Southings is about the same as the 146 vrs. strip Mr. Mabry indicates on his map between block H-1 and blocks K5 and K6. You should remember that block H-1 calls all along to close on and corner with the sections in blocks K5 and K6.

Mr. Twichell in correcting leagues Nos. 321, 323 and 327, holds them to the position as given by Mabry, simply sliding sections 39, 40, 53, and 54 and the balance of the sections South of same, closing up the gap as indicated by Mr. Mabry as being 807 varas wide E. & W., thereby shortening the South line of league 322, common with North line of section 14.

The sketch marked "D" represents block K6 and portion of H-1, constructed course and distance West and South from the old monument of N.E. corner of block K-5, and block K-11, from its old corner North of the old over-land California trail or road, leaving a strip of vacant school land as indicated in yellow. The same has been sectionized and sold as school land under the act of February 23, 1900.

It appears that the Capitol leagues were surveyed and constructed with reference to the old corners near the old overland trail or road.

In conclusion I would say that the resurvey by Mr. Twichell, State Surveyor, will be recognized, having been approved by this office, unless the courts of the country should decide otherwise.

Duplicate copies of his field notes are on file in the Oldham county surveyor's office.

Very respectfully,

E. von Rosenberg-Ewing

Commissioner.

Capt. R. M. Kenney, State Surveyor,  
Matador, Texas.

This carbon is for your information.



UNITED STATES GEOLOGICAL SURVEY  
WASHINGTON, D. C.

UNITED STATES GEOLOGICAL SURVEY

REPORT TO STATE

MISSOURI

17.

SK & Explanation in re  
to Locations of Sundry  
Surs. in Oldham Co.  
RM Kenney, AS Howren,  
EF Batte & C,  
Dated Sep. 30, 1904.  
Filed Oct 12, 1904.

EF 4

counter 33271

9/30/04 - 10/12/04