

I Frank Cleveland Surveyor of Orange County do hereby certify that the foregoing is a true sketch of surveys in Orange County and that the relative positions of the above named surveys are correctly represented on the above this Plat

Given under my hand at Orange this
 the 1st day of August A D 1876
 Frank Cleveland
 Surveyor of Orange County

File 11

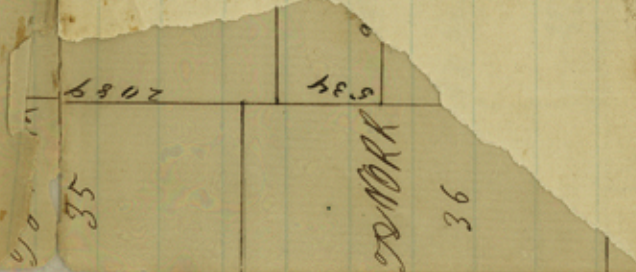
Orange County

Filed Aug. 9/76

J. P. [unclear]

Frank Cleveland's SK. & surs.
in Northern part of Orange Co.
Dated August 1, 1876.
Filed August 9, 1876.

5

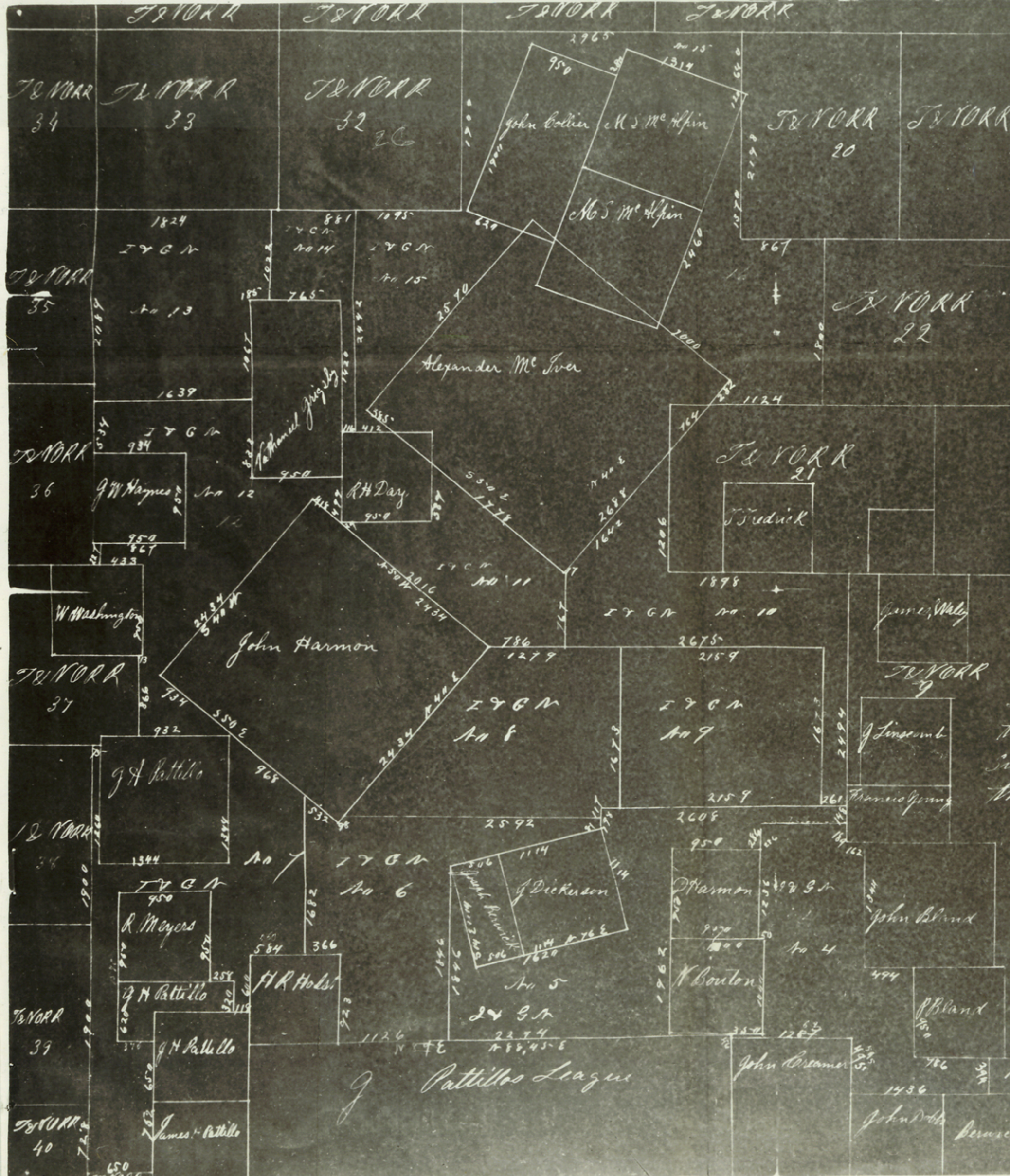


counter 33320

Orange County

Filed Aug 11 1876

Frank Cleveland's SK of sur. in Northern part of Orange Co. Dated August 1, 1876. Filed August 9, 1876.



I Frank Cleveland Surveyor of Orange County do hereby certify that the foregoing sketch of surveys in Orange County that the relative positions of the surveys are correctly represented on this plat.

Given under my hand at Orange Florida the 1st day of August A.D. 1876
 Frank Cleveland
 Surveyor of Orange County