

23.

Orange County
North Central Part
By S. E. Daniel.
April 12-1911.

ERAL LAND OFFICE,
AUSTIN, TEXAS

See here to

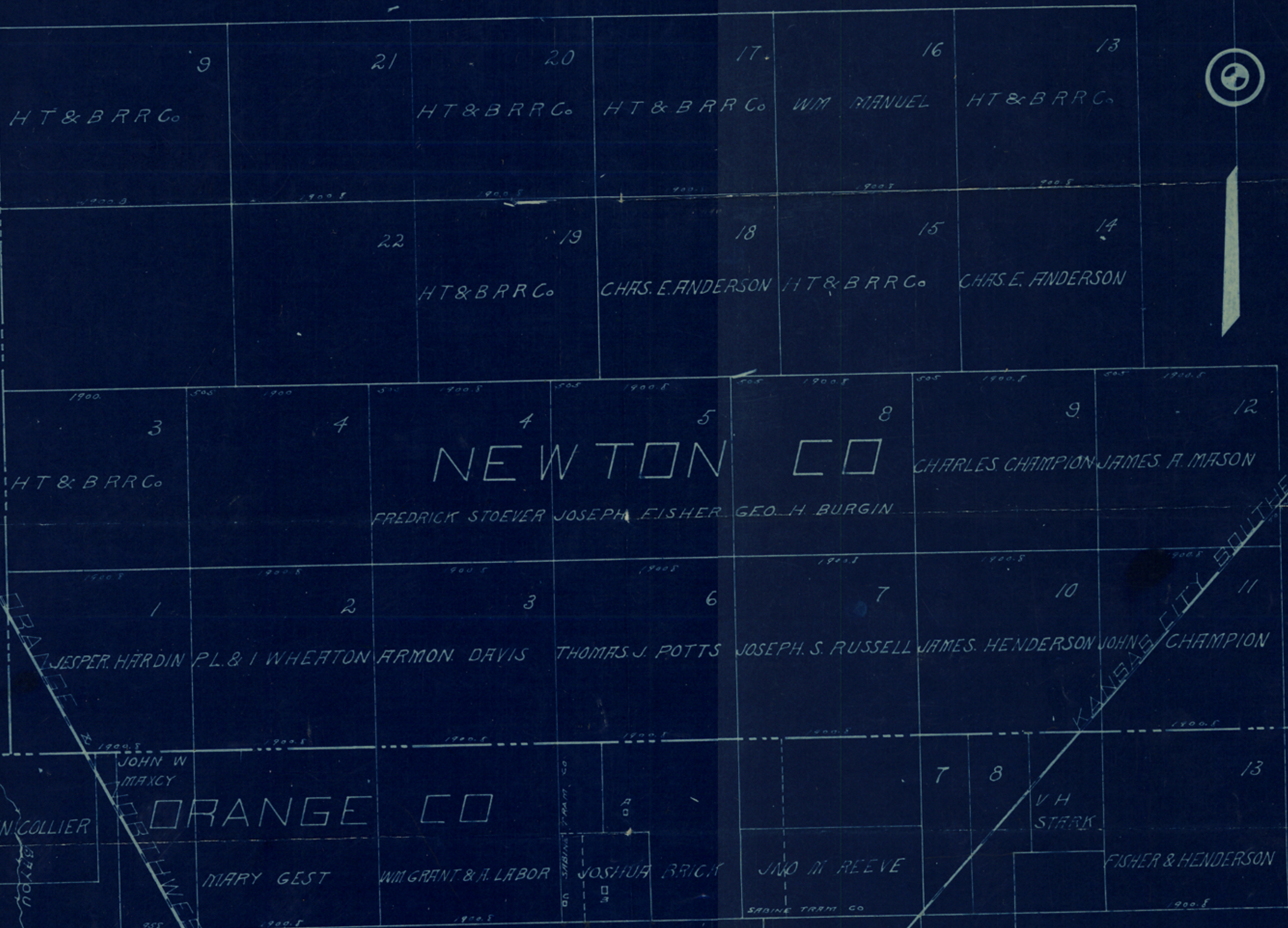
Talbot Duhig
Lumber Co 4/20/11
Vol. 1021 page 150

on this work
report —

Stitchin
4/20/11

counter 33344

JASPER CO



NEWTON CO

ORANGE CO

MAP
 SHOWING TRUE LOCATION
 OF THE
 S W 1/4 & W 1/2 OF N.W. 1-4
 JOSHUA BRICK SURVEY,
 AND,
 S 1/2 JOHN. M. REEVE SURVEY.
 SABINE TRAM CO.

OFFICE OF
 DANIELL BRO'S
 CIVIL ENG & SURVEYORS
 BEAUMONT TEXAS

Surveyed March 15-16-17-1911
 L.F. Daniell sur

counter 33345

copy for
General Land Office

copy

Beaumont, T e x a s.

Sabine Tram Company,

Beaumont, T e x a s.

Gentlemen:

In compliance with your request, I, L. F. Daniell, *C. E.* secured the services of Mr. Jack Noguess, County Surveyor of Orange, T e x a s, and together with the assistance of George Wilson and Dave Craft as chainman; they being duly sworn according to law to give true and correct measurements and having in our possession a true copy of a working sketch or map from the General Land Office at Austin, T e x a s. We proceeded on the morning of the 15th day of March, 1911, to establish by survey the sections of land in Orange County, T e x a s, known as Joshua Brick and J. M. Reeves, that the portion of said surveys owned by the Sabine Tram Company might be surveyed out of said sections and corners established-line marked defining upon the ground the exact position of their respective parts of said section of land as shown by the field notes of their Title deed.

In order to establish the corners and lines of the sections above referred to, it was necessary to begin at some known corner where the natural and artificial objects were in evidence upon the ground. We began at the S. W. corner of section 18 H. T. & B. where we found a gas pipe driven in the ground with cap screwed on same with letters indented therein, viz: S. W. 18 - H. T. & B. - S. T. C. From this gas pipe a cow oak bears S. 20° W. 2.8 varas and a pine N. 8° W. 2 vrs. which we identified as the original bearing trees to this corner each marked X. We ran West from this corner 505 vrs. and found a well defined hacked line running South - we found at this corner a gum tree that for course and distance quite fitted the gum tree mentioned as a bearing tree of the N. W. corner Joseph Fisher survey. The tree was scarred but we could not decipher a (cross) X upon it.

#2.

We ran South 1900.8 vrs. and found a corner of recent date, it was among large trees but we could find no old marked trees. This was at S. W. corner Joseph Fisher and N. W. corner of T. J. Potts. We continued South upon a well defined hacked line 1900.8 varas to S. W. corner T. J. Potts and N. W. corner Joshua Brick survey. We found this to be in the prairie or marsh. We found a pine knot for corner on County line - no bearing trees were in evidence.

We again began a survey at the N. W. corner of John Collier survey on County line of Jasper County and Orange County - here we found the bearing corresponding to field notes. We ran thence East on County line and that 230 vrs. cross Cow Bayou (according to field notes) at 475 vrs. the S. E. corner of Jasper County and S. W. corner of Newton County, T e x a s, this corner was identified by Jack Noguess, County Surveyor of Orange County, T e x a s, and John D. Peveto of Lemonville, T e x a s. The same was also identified as the S. W. corner of the Jasper Harding survey. There were several trees marked with X, we found at this point a stake in ground and several maples and other tree marked. We began anew from this point or corner and ran thence East and 738 vrs. center Orange & Northwestern R R track course of same was N. 28° W: at 1100 vrs. found old corner corresponding to field notes of the N. E. corner of section 23 T & N O R R and N. W. corner John W. Maxey survey fully set out in map hereto attached. At 1913 vrs. found stake for S. E. corner Jasper Harding survey and N. E. corner of J. W. Maxey survey, and Mary Gest survey. The new bearing trees are black gum 8" bears S. 26-1/2 E. 4 vrs. pin oak 14" bears S. 74 E. 8-1/2 vrs. both marked X. Began again at this corner as above described and ran thence East, at 56 vrs. East and 34 vrs. S. found a corner and a wire fence ran South from said corner and also E. from said corner. At 1900.8 vrs. found stake and 2 pines marked X. The bearing trees or marks upon them was not very old, the corner was just in edge of prairie or marsh

#3.

(as it called by the native there) a wire fence ran North from this corner; this line is followed from the West running thence East is well defined and known as the County line between Jasper and Orange and Newton and Orange. Began again at this corner it being the N. E. corner Mary gest and N. W. corner William Grant and a labor survey ran thence East at 1903 vrs. through marsh and came to stake at the N. W. corner Joshua Brick survey as we found running W. & S. from S. W. corner section 18 H T & B as described heretofore. Having run from two different known corners and the course and distance brought us to a common point, we decided that the point so indicated on the ground was the N. W. corner of the Joshua Brick survey and S. W. corner E. J. Pott survey, S. E. corner A. Davis and N. E. corner Grant and Labor survey. We placed a 2" gas pipe for corner, same being in marsh. There were no bearing trees began again N. W. corner Joshua Brick survey on County line ran thence East through marsh on County line 1900.8 vrs. put in corner for N. E. corner J. Brick and N. W. corner J. M. Reeves survey. We found no line running N or S from this point. Began again at above described corner and ran thence East motes of pine timber and marsh 1902 vrs. on County line and found line plainly hacked running South at no corner; according to course and distance this point was a N. E. corner of J. M. Reeves survey and so recognized it as the place for said corner. Began again at N. E. corner J. M. Reeves survey ran thence East 496 vrs. and identified the N. W. corner Section #8 and N. E. corner #7 G C & S F R R. Began again at the N. E. corner J. M. Reeves as located by us, and ran South on a hacked line and at 1880 vrs. center K. C. S. R R at 1900.8 vrs. putting gas pipe for S. E. corner of J. M. Reeves survey in right of way of said R. R. no bearing. Thence ran West from this corner and 664 vrs. found old corner recognized as the S. E. corner #7 and 1454 vrs. fence running in (this point is supposed by some of the settlers to be S. W. corner Reeves S. E. Brick survey) at 1673 vrs found N. W. corner #7 G C & S F R R section and identified same by living witness trees.

At 1900.8 placed gas pipe in marsh as S.W. corner J.M.Reeves and S.E. corner J.Brick surveys. From this corner ran thence West and at 680 vrs. found old corner claimed by Jno.D.Peveto as the S.E.corner J. Brick survey and S.W. corner J.M.Reeves. At 1900.8 vrs. and placed gas pipe for S.W. corner Joshua Brick survey thence N. 1900.8 vrs. to N.W. corner of J. Brick Survey as previously located and mentioned above. This completed the location of said Joshua Brick and J.M.Reeves surveys on the ground.

We began at S.W. corner of J.M.Reeves, marsh gas pipe for corner and ran N. 950 vrs. through marsh to gas pipe for N.W. corner of S. $\frac{1}{2}$ of said survey thence E. 1900.8 vrs. to gas pipe on E. line of J.M.Reeves survey for N.E. corner of S. $\frac{1}{2}$ of said J.M.Reeves survey, thence south 950 vrs. to S.E. corner J.M.Reeves survey - gas pipe - thence W. through marsh 1900.8 vrs. to beginning corner and containing 320 acres of land The eastern portion is entirely fenced and I was informed by Mr. Owen Burton that the fence was the property of himself. The Western portion is enclosed by fence owned by Jno. D. Peveto. We began again at the N.W. corner of the Joshua Brick survey - a gas pipe in marsh on County Line. Thence E. 475 vrs. to gas pipe in marsh for the N.E. corner of the W. $\frac{1}{2}$ of the N.W. $\frac{1}{4}$ of the J. Brick survey - Thence S. 950 vrs. through marsh and timber to a gas pipe for corner in a small island of timbers in marsh for the S.E. corner of the W. $\frac{1}{2}$ of the N.W. $\frac{1}{4}$ of said J. Brick survey - Thence E. 475 vrs. to gas pipe in marsh for the N.E. corner of S.W. $\frac{1}{4}$ of said J. Brick survey I found an iron stake 130 vrs. W. of the S.E. corner of the W. $\frac{1}{2}$ of the N.W. $\frac{1}{4}$ of said J. Brick survey claimed by J.D. Peveto as the S.W. corner of his homestead - Now from the ^NW.E. corner of the S.W. corner of said Brick survey - J.D.Peveto house bears N. 34 W. 300 vrs. and indicated on map by letter "A" From the N.E. corner of S.W. $\frac{1}{4}$ of said Brick survey we ran thence S. 950 vrs. to gas pipe for S.E. corner of S.W. $\frac{1}{4}$

of said J. Brick survey. Same being on South line of said Brick survey and 30 feet East of a gate - Thence West at 520 vrs. C. W. Peveto's house bears N. 3 degrees. West 350 vrs. indicated on map as "B" at 686 vrs. fence and corner supposed by J.D. Peveto and others as the S.E. corner of the S.W. $\frac{1}{4}$ of Brick survey at 733 vrs. the N.W. corner of section 32 pin oak 16" bears S. 66 W. 58 $\frac{1}{2}$ vrs. Pine 18" bears N. 45 W. 2 vrs. at 950 vrs. placed gas pipe for S.W. corner of Brick survey as previously mentioned P.O. 10" bears N. 32 $\frac{1}{4}$ E. 10.7 vrs. do 16" S. 55 E. 18 vrs. thence N. 113 vrs. garden fence about 50 feet across same at 185 vrs. the house of Geo. W. Helm brs. e. 10 vrs. see "C" at 198 $\frac{1}{2}$ vrs. center of well at 763 vrs. fence at 1900 vrs. the N.W. corner of Joshua Brick survey and beginning corner of the 240 acres according to filed notes of Title papers of Sabine Tram Company. The Eastern and North parts of 240 acres. of the J. Brick survey owned by the Sabine Tram Company is enclosed by wire fence belonging to J.D. Peveto and C. W. Peveto The S. W. portion is enclosed by G. W. Helm. We found that C.W. Peveto and Geo. W. Helm lived on S.W. $\frac{1}{4}$ of the Joshua Brick survey and that J.D. Peveto claimed 135 vrs. by 950 vrs. strip off E. side of the W. $\frac{1}{2}$ of the N.W. $\frac{1}{4}$ of Joshua Brick survey.

In conclusion we beg to submit the above as our report and we each concur.

Respectfully submitted

L. F. Daniell, Civil Eng & Surveyor

Jack Rogers

County Surveyor Orange County, Texas.

Beaumont, Texas.

March 27th, 1911.

Hon J.T. Robison Commissioner of General Land office.

Austin Texas.

I, Jack Noguess County Surveyor of Orange County Texas. Beg leaf to submit, a statement, of facts, concerning, the location several surveys of land in the north part of Orange ^{County}, a full statement of the location of the surveys of Joshua Brick Survey. and John M Reeves Survey, on the county line between Orange and Newton Counties. Have been submitted by Mr L.F. Daniell, who assisted in making that survey, That survey was made by running the full course and distance, of said surveys, Beginning at the S.E. Corner of Jasper County and the S.W. Corner of Newton County. also the S.W. Corner of the Jasper. Hardin survey, in newton county. Thence running ~~east~~ east on county line 1900.8/10 varas to the S.E. Corner of Jasper Hardin found its corner, Thence on east to S.E. corner of Wheaton and N.E. Corner Mary Gest Survey, found an old corner in edge of prairie, Thence on east on said county line 1900.8/10 to the S.E. Corner of Davis and N.E. corner of Wm Grant & A Labor survey, this corner was verified by running north and finding the line and corners, Thence on east, 1900.8/10 varas to to the S.E. Corner of said Potts, and N.E. Corner of Joshua Brick, survey drove Iron pipe for corner, Thence on east 1900.8/10 varas, drove stake in edge of woods, ~~thence on east 1900.8/10 varas to the S.E. Corner of~~ Joseph S Russell survey in Newton And N.E. Corner ^{N.E. cor} of John M Reeves Survey, ~~drove stake in edge of woods,~~ Thence south, found line running south, at 1900.8/10 varas drove Iron pipe, for south east corner of said Reeves Thence west at 1673 Varas the N.E. ^{N?} corner #7 G.C.S.F. RY Co survey, Identified the the corner ^{by} original witness tree, at 1900.8/10 drove Iron pipe for S.W. corner of said John M Reeves survey. (note this corner fell 223 varas west of #7 G.C.S.F. Ry corner,) Thence North 1900.8/10 varas to the N.W. corner of said John M Reeves. I then went to the North west corner of The Fisher & Henderson survey Identified, this corner by large sweet gum marked X brs N 81 E 2.4 ⁷⁰ varas also the witness tree to the V H Stark survey, Thence west 1240 varas to the N.W. Corner of said V.H Starks survey, Identified this corner by the original witness tree black gum 14 in diam brs N 61.1/2 7 19.8/10 varas mkd X, also a pine stump 29 in diam brs S 12.30 E 10, vrs dist this is also the north East corner section NO 8, Thence west 660 varas to the N.W. corner of said Section No 8, from here I run south 1900.8/10 varas on the west line of the section No 8 this line is fence by the owner, found no corner but pine tree marked X, Thence west on north line of No 8, 496. varas to the south East corner of John M Reeves, survey as put there by me.

I Jack Noguess County Surveyor of Orange County Texas, hereby certify that the foregoing surveys was made by in actual survey on ground, and according

Jack Noguess County Surveyor Orange LAW

u

Hon J.T. Robison Commissioner of General Land office,
Austin Texas.

I. Jack Noguess County Surveyor of Orange County Texas. beg leaf to submit to
this statement of facts, concerning, the location of the survey, G.C.S.F. Ry Co
No 7. in the north part of Orange County, I began this survey May 18. 1911.
Beginning at the S.W. corner of the Henry J Adams survey, found a large red oak
marked X old mark t Thence north 134, 4 varas, to the S.E. Corner section
No 7, also the N.E. section No 15. this corner was identified original witness
trees, a sweet gum 10 in diam brs N 28 W 23.4/5 varas dist, mkd old X,
an oak stump brs N 23 25.1/2 varas dist down Thence West 1047. varas to
the East line section No 32. made new witness trees, Thence North on East
line section No 32. and west line of section No 7. at 200 varas Orange &
Lemon public road. at 268 varas the center of tract. K.C.S. Ry .at 1213 varas
the N.E. corner of section No 32. this corner was identified by the original
witness trees, a pine brs N 28.30 E 110 3/5 varas, dist mkd ~~X~~ old mark
another pine down brs N 28 E 108 varas dist. both original witness trees
(note this distance fell short 10 varas,)

Thence East on the south line J.M Reeves survey, and north line section No 7
at 920 varas pine flat, at 1009 pass old corner this ^{has} been recognized as same
one of the N.W, corner of section No 7. (note to run as the original field
notes of section No 7. you would go north 1900, varas to county line, but
this is in conflict with the J.M. Reeves survey.)

at 1570 varas center of K.C.S.R.R. Tract, at 1629 varas stake for corner,
N.E. corner of No 7, (note it is 34 varas from this corner to the S.E. corner,
said J.M. Reeves survey,)

Thence South 397. varas to the north line, of Henry J Adams survey stake for
corner, Thence West 582. varas to the N.W. corner of said survey. stake in
marsh, new witness trees, Thence South on west line of said Adams survey,
816 varas to the place of beginning, this completes tract number, one, I

Begin at the S.E. corner of the J.M. Reeves survey, stake in marsh for corner,
Thence north 1900.8/10 varas to the N.E. Corner of said Reeves survey, and
Orange county line, no witness trees, (note I found an old a part of the way)
thence I run East on county line 496. varas, to the N.W, corner of section No 8.
found witness trees but I had no field notes them, as the field notes of
corrected survey, of section No 8. has no witness to its N.W. corner, this
corner was located by running from its N.E. corner, West 660 varas dist.
thence I run south on west line section No 8, an old line, with a fence on it,
by the owner, at at 1610 varas, center of K.C.S.R.R. tract, at 1900.8/10 varas
corner, stake no witness in field on No 8. but found a pine marked X,

then I run west 496, vrsto place of beginning.

counter 33352

*Jack Noguess
County Surveyor*