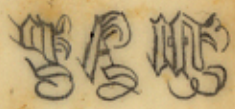

 SURVEYS MADE
 for the
 TEXAS PACIFIC RAILWAY CO.
 IN
 PALO PINTO CO.
 BLOCK
 A
 M.E.P. & P.R.R.
 RESERVE
 WEST OF THE BRAZOS
 RIVER

Correction caused by error in record of course of the Center Line of the No. 1. Paso & Pacific Rail Road Reserve East of the Brazos River!

Charles Adam
 Principal Surveyor
 J.P.R.W.

July 13. 1875

SURVEYS MADE
 IN
 TEXAS PACIFIC RAILWAY CO.
 PALO PINTO CO.
 BLOCK
 A
 WEST OF THE BRAZOS
 RIVER
 M.E.P. & P.R.R.



Measure East of the Brazos River
 of the M.E.P. & P.R.R. Pacific Coast
 record of course of the Center Line
 Correction entered for error in

July 13. 1875
 Charles Johnson
 Principal Surveyor
 J. B. [unclear]



6.
 Palo Pinto Co
 About 5 to 12 Mi. E. of Palo
 Pinto, "West of Brazos"
 July 13, 1875.

7/13/75