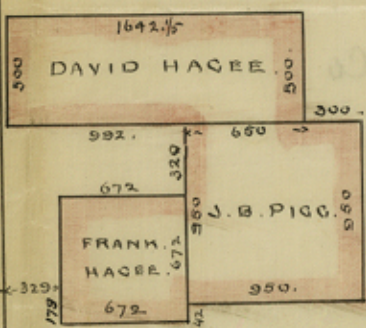
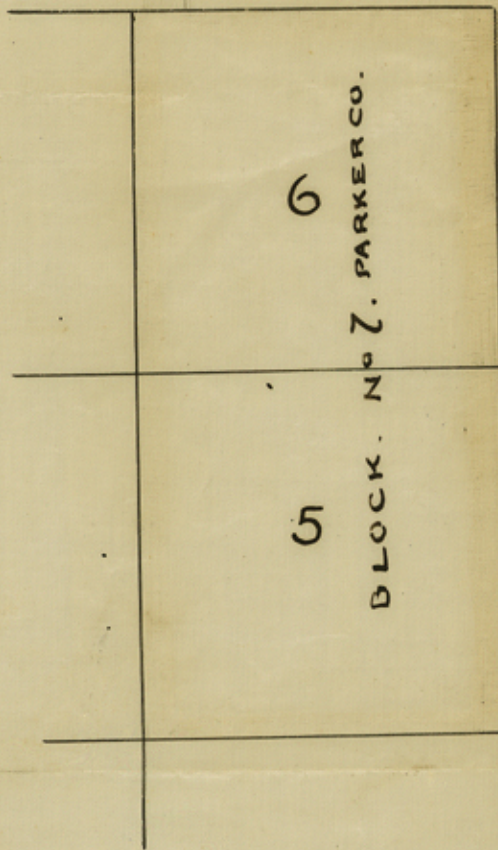


18
 Robertson & Co
 General & Pacific Coy
 of
 dated
 June 8. 1876
 12 mi. 2.48 - E. of Weatherford



Sketch to accompany
 Certificate J. A. Hawkins
 Dist. Surveyor Parker Co.
 May 23. 1876.

Parker co
File 1019. 18.

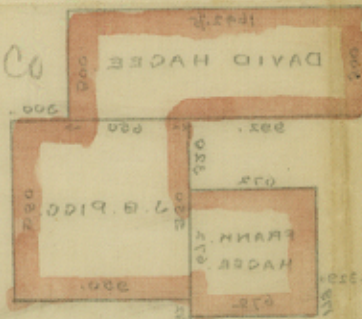
Robertson Scrips
Texas & Pacific Ry Co
Sketch.

Filed in General Land Off.
Dated 5/23/76.
June 5. 1876.

[Signature]
Com

15 mi. S. 48° E. of Weatherford.

Parker Co



Block No. 5. PARKER CO.

2

2

Sketch to accompany
Certificate of Robertson
Dist. Surveyor Parker Co.
June 23. 1876.

counter 33555