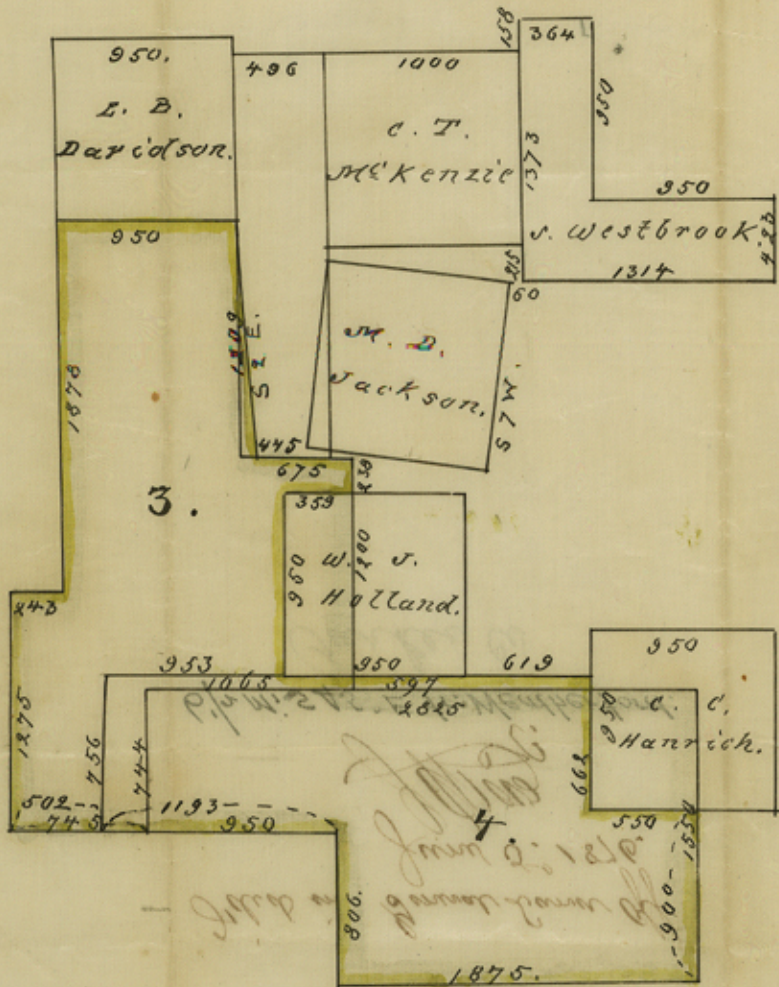


Sarker Co.

Surreys 3 & 4. Block 5.

Scale 1000 fms = 1 in



John C. Harrick
James B. Sarker & Co.
Surveyors
1875

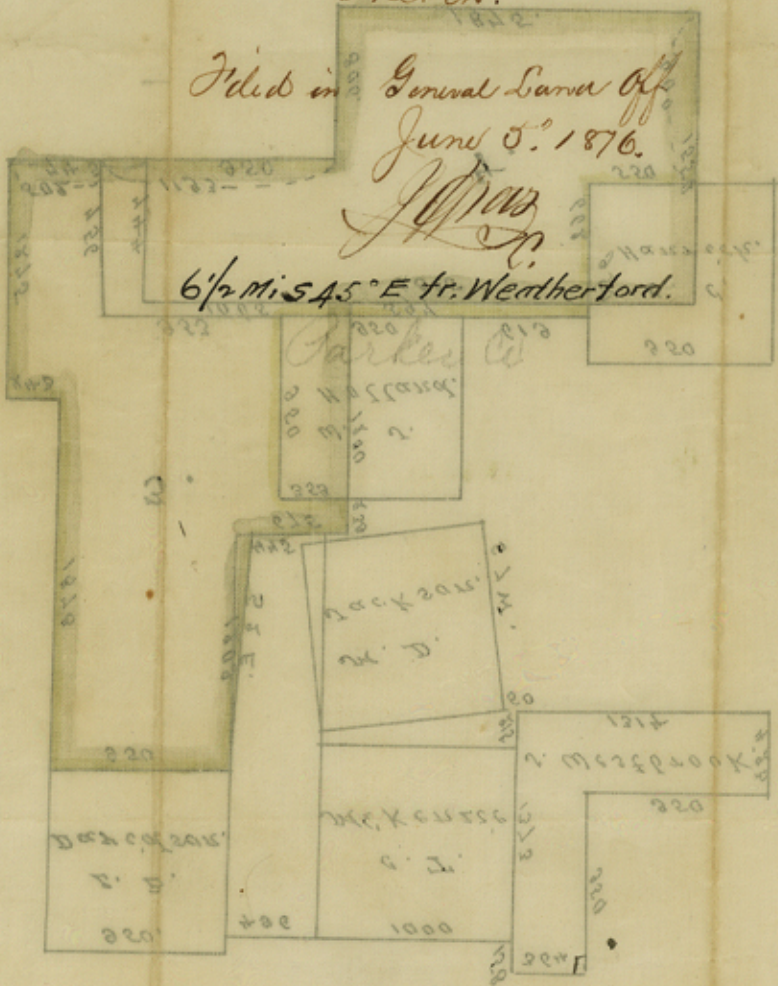
Parker Co, **22**
 Filed Aug. 22
 Robertson Scrip
 Texas + Pacific Ry Co.
 Sketch.

35295
 1774

Filed in General Land Off.
 June 5^o 1876.

J. W. Robertson

6 1/2 Mi. S 45° E fr. Weatherford.



11 = 27400015502

2 March 21st 1876

J. W. Robertson

counter 33563