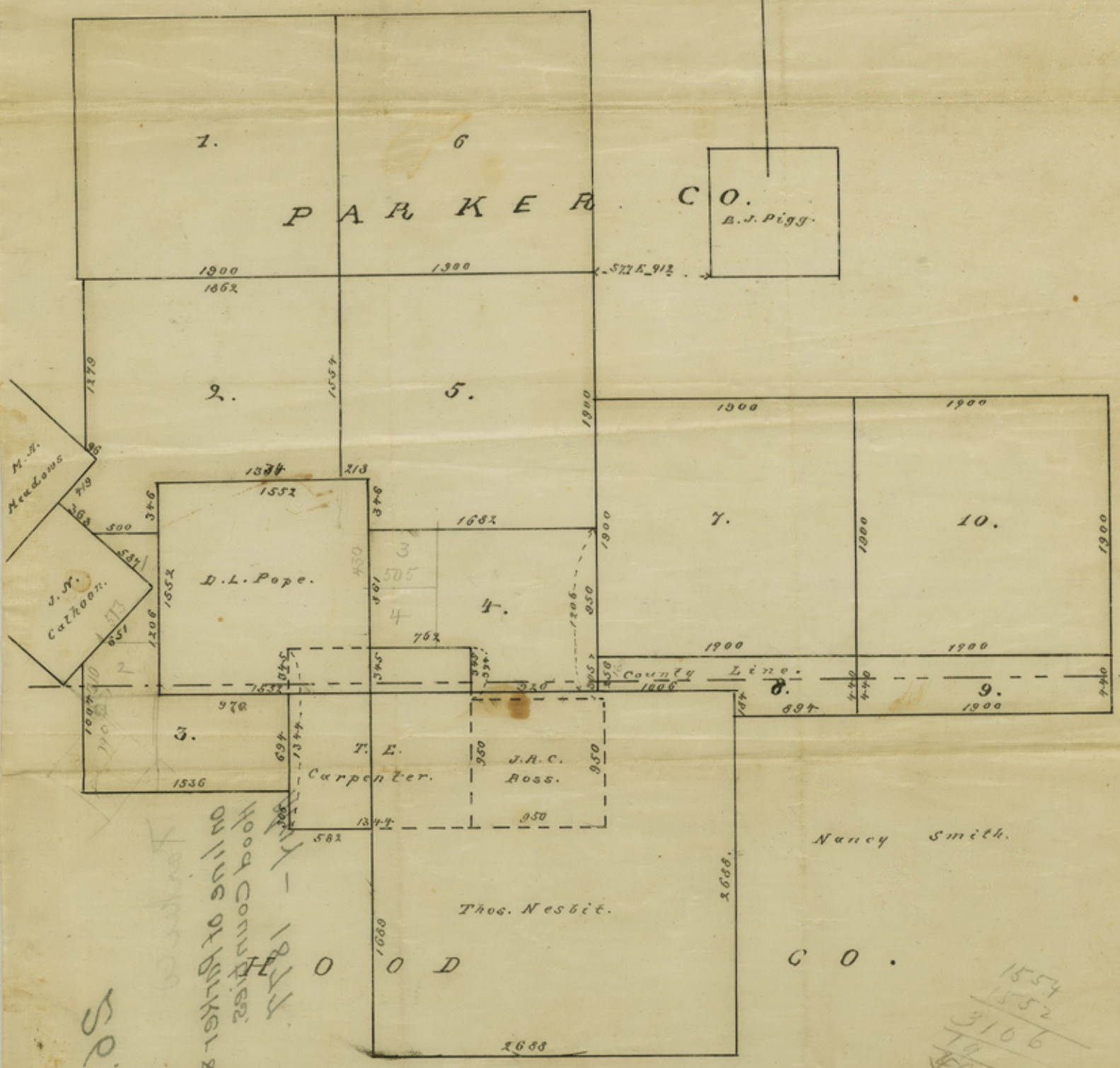
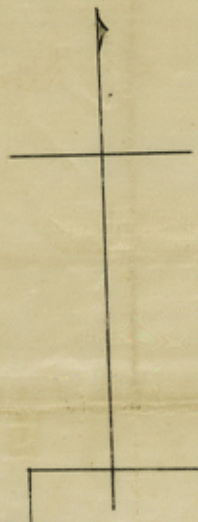


Parker Co.
 Block No 7. T. & S. Ry. Co.
 Corrected May 1877

Distr. Surveyor
 Parker Co.
 Scale 1000 fms = 1"



S.P.
 1877
 HOOD COUNTY
 ON USE OF PARKER &

counter 33566
 1554
 1552
 3106
 19
 4006

Weatherford
 May 11 / 1877 }
 J. H. Hawkins
 Surveyor of Parker Co Texas

26.

Parker Co
on line of Parker &
Hood Counties.
May - 1877.



Proprietor of
Parker Co
Hood Co

March 11 / 1877
All survey done

1000
2000
3000
4000
5000
6000
7000
8000
9000
10000

Counter 33567

COLLECTED MAY 1877
J. S. H. M. D. T. G. Co.
J. S. H. Co.

Scale 10000 Feet = 1 in
PARKER CO.
DRAFTSMAN

