

A SKETCH

Showing the correct relative location of
the Jacob Aaron, P. H. Anderson, W. Woolsey,
J. Woolsey, and other Surveys.

J. N. Hawkins District Surveyor
Parker County.

Charles N. Swin.

Prin. Surveyor
T & P. Ry. Co.

July 6th 1844.

101.

- 1900⁸ -

3289

5492

95.

1900⁸



J. H. Haape
209° 45' E
960

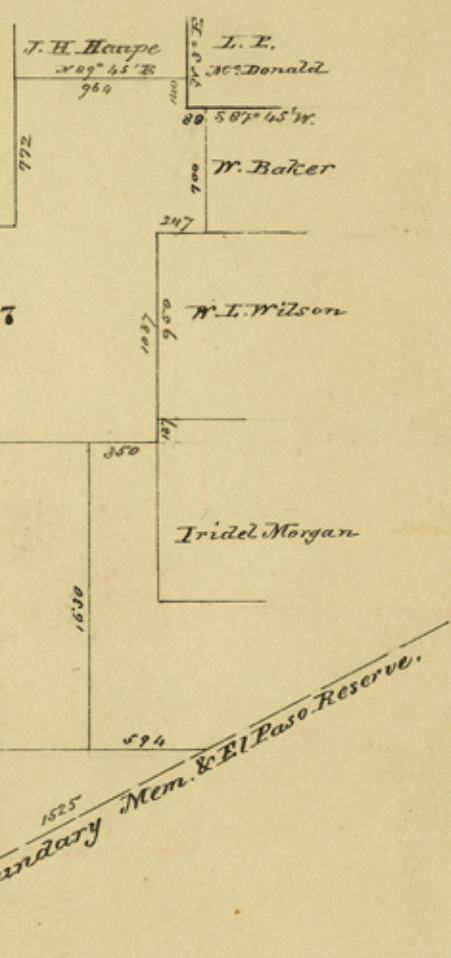
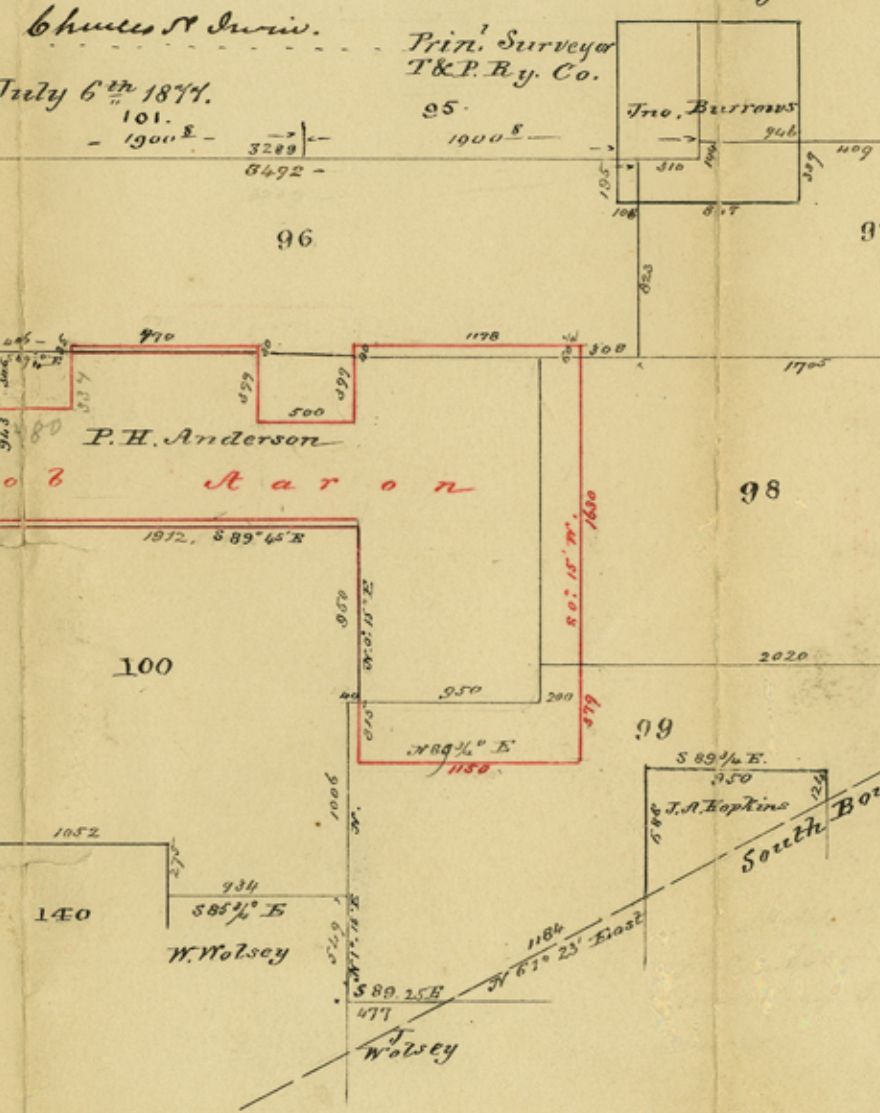
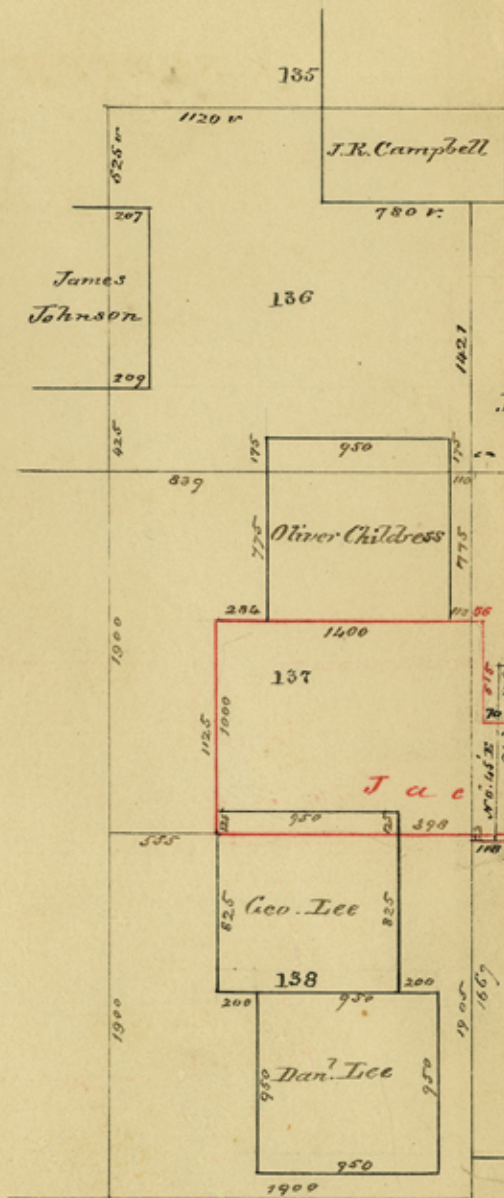
J. E.
McCDonald

80 587° 45' W

700
W. Baker

1037
960
N. I. Wilson

Iridel Morgan



Scale. 1 in = 1000 varas.

41

Parker co

I. N. Hawkins' SK. of SURS. about 6 mi
NE of Weatherford.

Dated July 6, 1877.