



950
863
87

Sketch
 to accompany Field Note
 of Block No. 4: I & G N R
 Company
 Parker County
 22 Sept 1877
 Scale 1000 feet to an inch Pa
 counter 33589

J. D. Hawkins Surveyor Parker Co. Tex
 hereby Certify that the foregoing survey
 made for and by the I & G N R Co. as herein represented
 as existing from measurements on the ground
 J. D. Hawkins Co Surveyor

Parker County
 Block 8



This sketch represents
 lines as they are found
 to exist on the ground
 from actual measurement
 J. M. Hawkins
 Surveyor Parker Co Tex

Sketch of Block 8
 Parker County
 Tex G. N. R. Co
 Scale 1000 ft = an inch
 1877
 counter 33591

523
 465
 1307
 950
 2260

Parker County.

Sketch - D

I.C. & N.R.R. Co.

Filed October 16/77

Wm. H. Brown
County



Scale 1000 ft = an inch
 I.C. & N.R.R. Co.
 Parker, California
 State of California

counter 33221

counter 33592

Withstanding
 from actual measurement
 to extent of the following
 lines as per the following
 this plat is prepared
 and certified
 Wm. H. Brown

Parker, Comptroller

2087

D.A.R.V. Co

Filed October 10, 11



Sec 1
Block No
T & P A R

J. Davis

Jas
McDonnell
1312

John
& Welch
275 E 905

SEC NO 1
T & G N
R A C O

Leon County School Land

G W
Bates

Wm
Reynolds

D M
Bates

F. M.
Bates

J A
Baker

Chas
Baker

J R
Cross

D
Smith

J R
Moore

Survey No 2
T & G N A R A

BBB
CORR
Co

M.C. Meadows

J. H.
Cathorn

County Line

SEC 2
T & P
R A C O

I J Hawkins Co Survey & Parker Co
 hereby certify that the above survey
 made for 1897 R.A.C. are here represented
 as they exist on the ground
 J. H. Hawkins Survey & Parker Co
 counter 33593

Parker County.

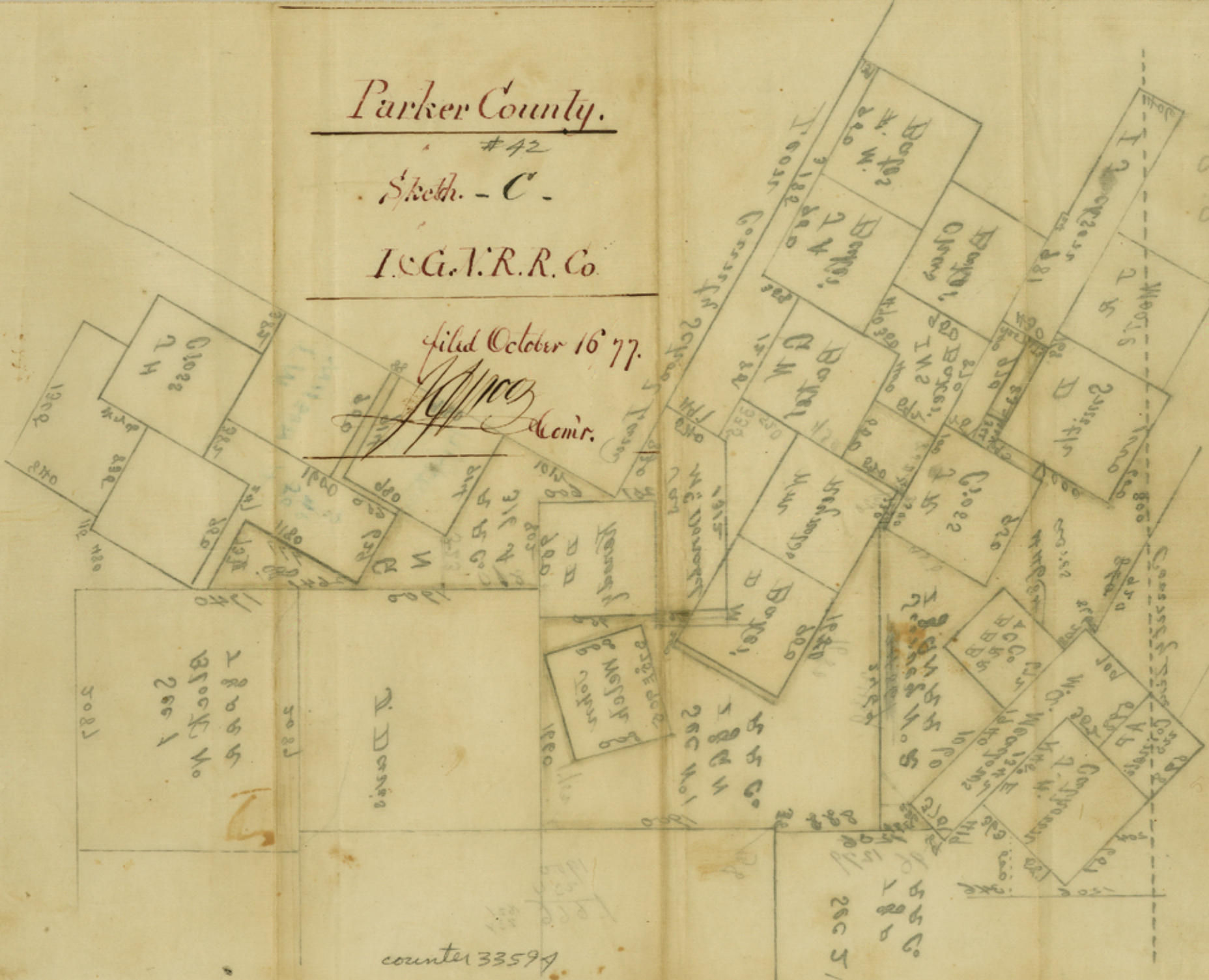
#42

Sketch - C.

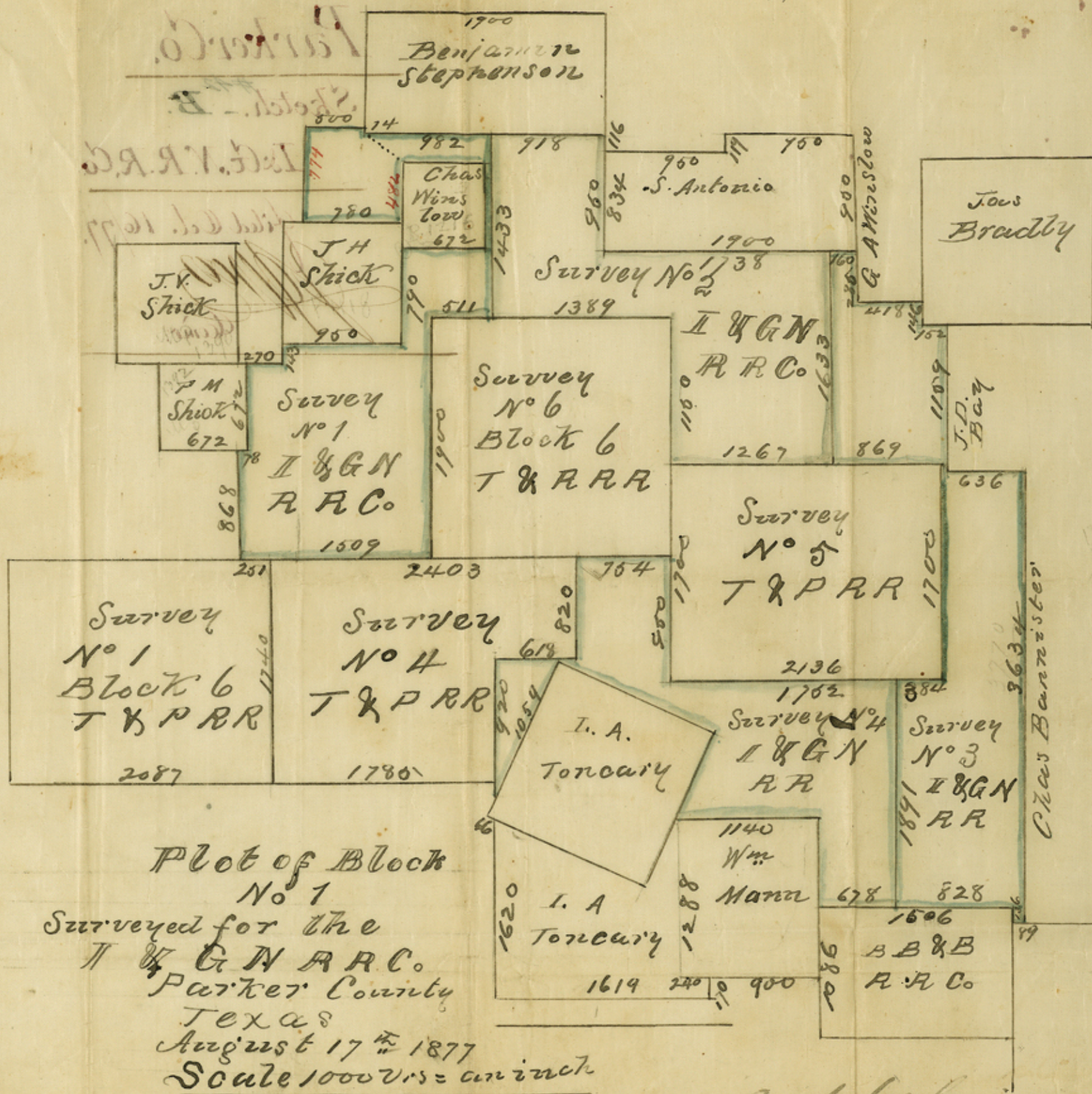
I.C.G.T.R.R. Co.

filed October 16 '77.

[Signature]
Comr.



county 3353
 I.C.G.T.R.R. Co.
 Mortis
 Gloss
 Bayer
 D. Davis
 W.C. Co.
 Sec 1
 Sec 2
 Sec 3
 Sec 4
 Sec 5
 Sec 6
 Sec 7
 Sec 8
 Sec 9
 Sec 10
 Sec 11
 Sec 12
 Sec 13
 Sec 14
 Sec 15
 Sec 16
 Sec 17
 Sec 18
 Sec 19
 Sec 20
 Sec 21
 Sec 22
 Sec 23
 Sec 24
 Sec 25
 Sec 26
 Sec 27
 Sec 28
 Sec 29
 Sec 30
 Sec 31
 Sec 32
 Sec 33
 Sec 34
 Sec 35
 Sec 36
 Sec 37
 Sec 38
 Sec 39
 Sec 40
 Sec 41
 Sec 42



Plot of Block
 No 1
 Surveyed for the
 I & G N R R Co.
 Parker County
 Texas
 August 17th 1877
 Scale 1000 vs = an inch

J. N. Hawkins Surveyor Parker Co do hereby
 certify that the above survey made for
 I & G N R R Co are here represented as found to ground
 exist from actual measurements on the ground
 J. N. Hawkins Co Surveyor
 counter 33595

Parker Co.

Sketch - B.

Isl. V. R. R. Co.

Filed Oct. 16/77.

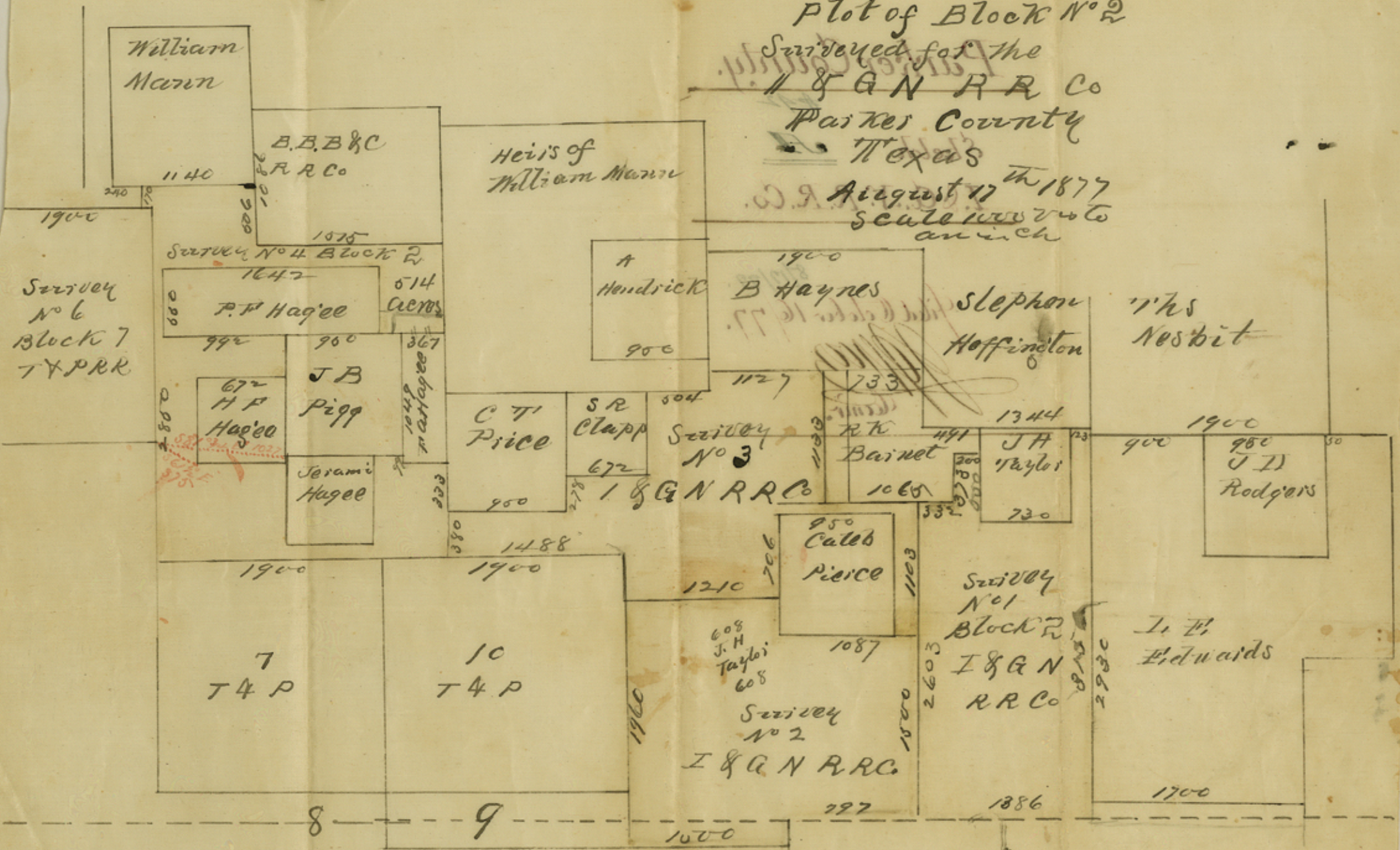
[Handwritten signature]
Comm.



Plat of Block
 No. 1
 Surveyed for the
 Parker County
 Texas
 August 17th 1877
 Scale 1000 ft = one inch

Plot of Block No 2
 Surveyed for the
 I & G N R R Co
 Parker County
 Texas

August 17th 1877
 scale $\frac{1}{2}$ inch to
 an inch



This sketch represents the lines
 surrounding Block 2 as they are found to exist
 by actual measurement upon the ground
 J.M. Hawker Co Surveyors Parker Co

Parker County.

Sketch A

I. C. T. R. R. Co.

filed October 16/77.

Conner.



State of Arkansas
County of _____
I, _____ County Clerk
do hereby certify that the within plat
is a correct and true copy of the
original as the same appears in the
files of the Clerk of the Court
this _____ day of _____ 1877.

33578

Part of Block No. 5
I.C.T.R.R. Co.
Parker County
Arkansas
The 1877

Hogge
Hogge

Hogge
Hogge

Hogge
Hogge

1700

1886

227

1500

8 - 2

7 4 9

10 4 9

1488

1489

1488

1488

1488

No. 3

I & G N R R Co

Hogge

Hogge

Hogge

1900

1900

1900

1027

914

914

Hogge

Hogge

Hogge

Hogge

Hogge

Hogge

Hogge

Hogge

Hogge

Block 7
No. 6
Hogge

1140

I.C.T.R.R. Co.

Heirs of
Harris

Harris

Harris

Harris

Harris

Harris

Harris

Harris

Harris

Harris

Harris

Harris

Harris

Harris

Harris

Harris

Harris

Harris

Harris

Harris

Harris

Harris

Harris

Harris

Harris

Harris



Block No 3
GN
T.R.R. Surveys
in
PARKER Co.

Sec 1.
Block No 1
& 2 RR

J. Davis

T.R.P

T.M.P

SEC. NO 1
& GN
R.R.C.

D.M. Baker

Reynolds

Chas. Baker

J.R. Gross

I. Jackson

J.R. Moore

D. Smith

J.A. Bates

J.A. Baker

D.M. Baker

Reynolds

Chas. Baker

J.R. Gross

I. Jackson

J.R. Moore

D. Smith

J.A. Bates

John Welch

counter 33500

Benjamin
Stephenson

1100
500
14
982 1318 918

Chas
Wins-
low
672

950
119
950
Antonio B B B
R R C

Jos.
Bradley

J. V.
Shuck

J H
Shuck

Sur. No 2

G A Winslow

F M
Shuck
672

Sur. No 1

Sur. No 6

1 & GN

1 & GN
R R C

T & P

Sur. No 5
T & P

J. P.
Ray

Sur. No 1

T & P

2087

Sur. No 4

T & P

1785

L. A.

Toncary

Sur. No 4
1 & GN

Sur. No 3

1 & GN

Chas. Bannister

L A
Toncary

Mann

Mann

BB & B
& C R R

Plot of Block
No 1
Surveyed for the
1 & GN R R C Co
Parker County

counter 33601

Parker County #42

Sketch

filed Oct. 16/77

Wm
Covey



Block of Block

Surveyed for the
C. & N. R. Co.
Parker County

counter 33602

counter 33604



Sketch
 of Block No. A I & G. N. R. R.
 Company
 Parker County

Patented Feb 17 1872

counter 33603



Sketch of Block No. 5
 I & G N R R Co.
 Parker County
 scale 1000 ft to an inch
 1877

I & M Hawkins Co Survey P. Attkr Co
 hereby certify that the foregoing survey
 made for I & G N R R Co are duly represented
 as appearing on the ground
 center 33605
 I & M Hawkins
 Surveyor Parker Co

Parker County

Sketch. I

I. C. N. R. R. Co.

Filed Oct. 16/77

[Handwritten signature]
Comr

Scale 1000' to an inch
Parker County
I. C. N. R. R. Co.
Sketch of Block No. 2

1877



42.

Parker Co

Sundry Sketches of I & G N R R Co.

Surveys in Parker Co., Texas.

Sundry Dates.

Filed Oct. 16. 1877,

10-16-77.

counter 33607