



General Land Office.

State of Texas.

Austin.

October 23, 1903.

JOHN J. TERRELL, COMMISSIONER.  
J. T. ROBISON, CHIEF CLERK.

Capt. A. S. Howren,  
State Surveyor,  
Hereford, Texas.

Dear Sir:

Your favor of 6/19/03 was duly received, together with corrected field notes of Capitol leagues Nos. 466 and 467 in the N.E. corner of Pecos county. Upon examination I find that the corrections are made outside of the original patented boundaries, that is, you have moved the East boundaries of these two leagues East to cover the deficiency of 484 acres, which was lost by conflict with Gregg county school league No. 2. This loss of 484 acres the two leagues must stand, hence I return you the corrected notes.

The W.A. Laughlin S.F. 5182 under the act of Feb. 23, 1900 for 621 2/3 acres, survey No. 23, blk. B, just East of Capitol league No. 466, will be allowed as soon as the field notes are corrected. They do not close. The other survey for W.A. Laughlin of 501 acres S.F. 5529 just East of the ell corner E of #467, on a continuation of S.F. 5182, has been examined and rejected as being on Capitol league #467. The ell corner - E of 467 is 589 yrs. East of the original distance from S.E. corner of league #466, as you have it. League No. 467 should and can be constructed from its original S.W. corner, and is not dependent on #466.

Very respectfully,

E. von Rosenberg (JFB)

Commissioner.

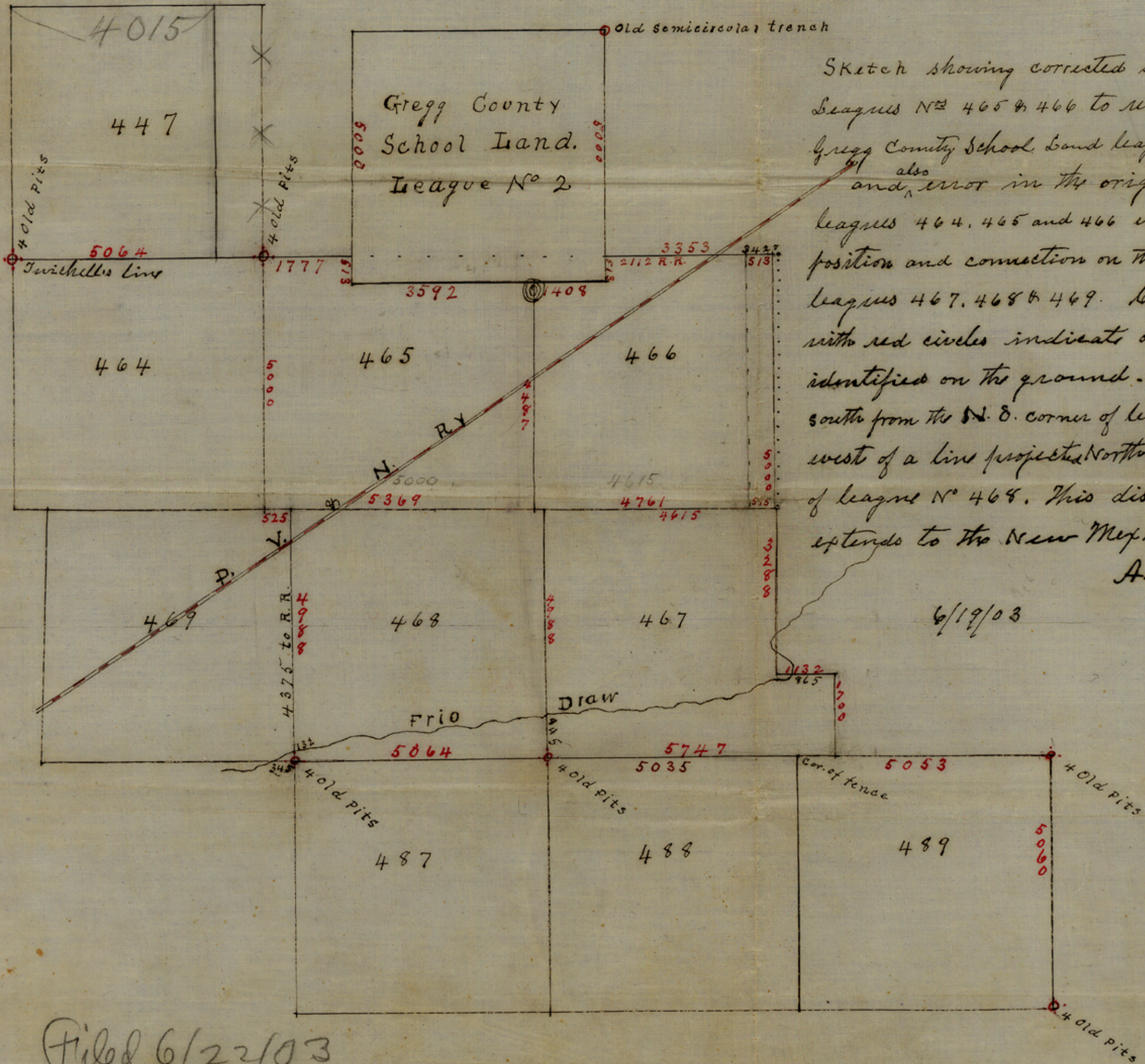
Hon. Travis Henderson,

c/o Tom Henderson, City.

This carbon is for your information.

counter 33624





Sketch showing corrected surveys of Capitol Leagues Nos 465 & 466 to remove conflict from Gregg County School Land League No 2, Parmer Co., and also error in the original location of Capitol Leagues 464, 465 and 466 with reference to their position and connection on the ground with Capitol Leagues 467, 468 & 469. Corners marked with red circles indicate original corners identified on the ground. A line projected south from the S.W. corner of league 464 falls 525<sup>th</sup> west of a line projected North from the S.W. corner of league No 468. This discrepancy evidently extends to the New Mexico line

A. J. Horroren,  
State Surveyor

6/19/03

PARMER COUNTY, Tex

Filed 6/22/03

See sketch by  
D. von Rosenberg in  
slide (10/22/03.)



See letter of May 19/03 from  
Howver

3136

Report of Survey.

Hon. J. J. Terrell, Com. & S. O.

Austin - Texas.

Dear Sir - Referring to corrected field notes of Capitol leagues Nos 465 & 466. I respectfully state that I found by actual survey that said leagues were originally made in conflict with Gregg county School Land league No 2, encroaching upon said league to the extent of 454 acres of land, which was lost to the patents of said Capitol leagues. To preserve the quantity of land called for in the patents for leagues 465 & 466. I moved the east boundaries of these leagues a sufficient distance east to cover the deficiency, there being no patented land east of 466, adjacent, to prevent this. Disregarding the conflict of these leagues with said School Land league, and any possible correction of same, the county surveyor of Deaf Smith county has located one or more claims in conflict with league 466 as corrected, and shown by dotted lines on sketch hereto attached. I inclose two corrections of Capitol league No 466, one being for quantity only. 4088 acres. The other to conform to the corners of C.S. No 467, and to preserve a straight line from the E. corner - L - of 467 to the N.E. corner of 466. This gives league 466 - 65 1/2 acres excess, but fails to compensate for the 174 acres lost by virtue of conflict of C.S. No 490 with Gregg Co. School Land league No 3, Castro county. If not inconsistent, I trust you will accept these latter field notes of C.S. 466 as the land



included in the given boundaries has been sold  
and deeded, the surveying of same being based on  
the well defined S. W. corner of Capitol League 467.  
It is a fact worth considering that Capitol League 466 has  
no identified corner (I searched diligently for the three  
called for) and in that case can be constructed on C.S.  
No 467 which has one well defined corner.

Please notify me soon after the matter is passed on.

Yours truly -

A. S. Howren.

State Surveyor.

Wauford, Tex. 6/19/03

Sketch File No 2.

Parnen Co.

Sketch and explanation  
N. E. corner of County.

By Capt. A. S. Howren  
State Surveyor.

Filed June 22/1903.

John J. Terrell

Comr.

by E. W. Lorenberg  
Examining Officer

See Sketch file no. 1.

7500