



General Land Office.

State of Texas.

Austin. November 4, 1913.

J. T. ROBISON, COMMISSIONER.
J. H. WALKER, CHIEF CLERK.

Hon. James D. Hamlin,
County Judge, Parmer County,
Farwell, Texas.

Dear Sir:-

Replying to your letter of the 30th ultimo, requesting this Department to designate the geographical center of Parmer County, beg to advise that upon receipt of a similar request dated October 25, 1913, from three of the County Commissioners of Parmer County, and not knowing that any further request would be made by you, this Department considering same in connection with your former request of date October 1st, 1913, issued said certificate and mailed same to you on the ³¹1st ~~ultimo~~. In as much as your former request was not signed officially, if you have not placed this certificate of record, it might be well for you to return same and have it reissued under your last request.

Respectfully,

Clark/LSN

Acting Commissioner.

counter 33630

JAMES D. HAMLIN
County Judge Parmer County
Farwell, Texas

2482

RECEIVED

NOV 1 1913

Referred to Map

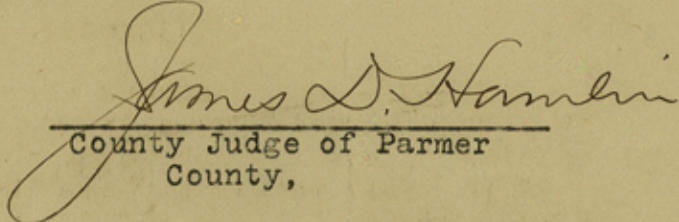
October
30th
1913

Hon. John T. Robison,
Commissioner General Land Office.
Austin, Texas.

Dear Sir:

As County Judge of Parmer
County I hereby notify you that it is desir-
able upon the part of the people of this,
Parmer County, that the geographical center
of said Parmer County be designated, pre-
liminary to an attempt of a removal of the
present County-seat of said County; and
that you designate said center to me by
your certificate as provided by your certificate
in Article Number 1931 of the Revised Civil
Statute of 1911.

Yours truly,


County Judge of Parmer
County,

JAMES D. HAMLIN
County Judge Parmer, County
Farwell, Texas

RECEIVED

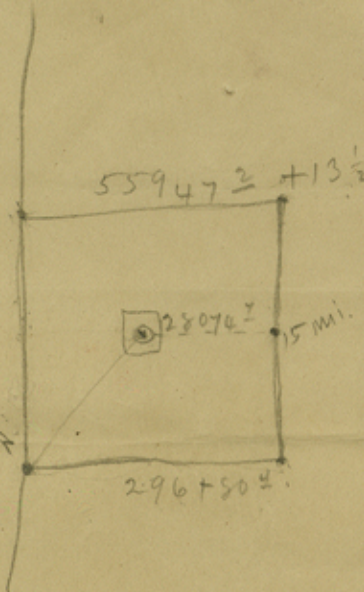
OCT 4 1913

Referred to Map

2262

October
First
1913

27973.6
6.75
144.
40.20
381.08 35



State Commissioner,
Land Department,
Austin, Texas.

Dear Sir:

I am handing you herewith
letter signed by five citizens of this
County, asking that you ascertain the
geographical center of Parmer County,
Texas, as provided for in Article 1391,
Revised Statutes, and I will be pleased
to have you comply with this request so
that I may have the matter placed of
record in this County.

55 10.7
290.
563.7
557.5
417229
38074.5

Yours very truly,

James D. Hamlin

3



THE FIRST STATE BANK 88-960

1449

RECEIVED
OCT 30 1913

Farwell
~~Bevins~~, Texas, Oct. 25th 1913
Parmer County

Land Commissioner
Austin, Texas

Dear Sir:-

On October 18th we held an election in Parmer County for the purpose of locating a County Seat, and there will be a contest as to what place was selected at said election. It is desirable on the part of the people of Parmer Co. that the center of the County should be designated.

We therefore request that you immediately designate the geographical center of said Parmer County according to the maps and other data now on file in your office and forward the certificate for record.

Yours very truly,

W. E. Godwin
Com. Precinct no 1

H. L. Spring
Com Precinct no 2

Stephen Jesko
Com. Precinct no 4

4

Sketch Files
4
PARMER Co.

Carbon Copy of Certificate
designating the Geographical
Center of Parmer County,
10-31-13.

Letters, certificates, sketches
and documents relating to Geo-
graphical Center of Parmer Co.

GENERAL LAND OFFICE
AUSTIN, TEXAS

counter 33634

Station	Bearing	Distance	LATITUDE		DEPARTURE		D. M. D.	DOUBLE AREAS		REMARKS
			North	South	East	West		North	South	
1										
2										
3										
4										
5										
6										
7										
8										
9										
10										
11										
12										
13										
14										
15										
16										
17										
18										
19										
20										
21										
22										
23										
24										
25										
26										
27										

New State line at mile post 152 ... varies in 43.5 east of fence on old State line.

South line of Stephens Bkts. 53
 Howers line 628-629-630
 Turichells " " 626-627
 " " " " 625-624
 " " " " 623-622 to Tibbons - County line

4148
 15825
 10228
 10228
 6364.7
 46793.7
 - 43.5

Width across Bailey Co. along a line passing along the S line of 625 = which is practically 7 miles East of the " " by Parme Co. Convergence of meridians 24 1/2 miles apart in lat - 3X is - 14' 50" - for 7 miles is

46750.2
 57.5

Estimated length of north line of Bailey County
 Tibbons length of Parme - Lamb County line
 Estimated S. " " South line (by Bailey Co. measurements)

46692.7
 9714.3
 56406.9

Length of North line of Parme Co. - on N. of Smith Co. line
 At mile 189 + 722.5 on New State line the NW cor. of S. is East 13.5
 Total length of north line of Parme County

55947.2
 13.3
 55960.7

Calculating South line of county by adding divergence of meridians for 30 miles and divergence of New State line for 30 miles - to length of north line of county gives - for divergence of meridians 30 miles
 " " of State line on west line of county

296.
 80.4
 55960.7

North line of Parme County
 Estimated length of South line Parme Co.
 Estimated length by measurements in Bailey Co.
 a difference of 70 rods.

56337.1
 56406.9
 56692.7
 56406.9
 56337.1
 69.8

Station	Bearing	Distance	LATITUDE		DEPARTURE		D. M. D.	DOUBLE AREAS		REMARKS	
			North	South	East	West		North	South		
1	Using the length of south line of county										
2	calculated from length of north " " "										
3	North line by actual measurement										
4									56337.1		
									55960.7		
									2117297.8		
5	Length of parallel through center of county is 56149.4										
6									256148.9		
									28074.5		
7	For center of county measure 28074.7 varas										
8	(or 14 miles and 1463.5 varas) west along the										
9	parallel from the 15th mile post on the east										
10	line of Parmer County.										
11	Or from a point on the New Mexico-Texas										
12	line (as marked by joint commission in 1911)										
13	640.5	722.5 varas north of mile post 174 measure									
14	east along the parallel 28074.7 varas										
15											
16									55960.7		
17											
18											
19											
20											
21											
22											
23											
24											
25											
26											
27									56337.1		

a point 82 varas South of the
 722.5
 174
 640.5

Center of gravity b. calculated from the following formula

$$ob = \frac{en}{3} \times \frac{2ab + cd}{ab + cd} = .28430$$

1 I, J. H. Walker, Chief Clerk and
2 Acting Commissioner of the General Land
3 Office of the State of Texas do hereby
4 certify that calculations made from the
5 records of this office determine the center
6 of Parmer County to be 28074.7 varas (
7 14 miles and 1463.5 varas) west along the parallel
8 from the 15th mile post on the east line
9 of Parmer County or 28074.7 east along the
10 parallel from a point on the Texas - New
11 Mexico State line (as marked by joint
12 commission in 1911) 722.5 varas $N0^{\circ}04'55''E$
13 from the 174 mile post on said line.

16 Description along the Texas - New Mexico line.
17 Distances are in chains and fractions thereof.

18 The 66 foot chain being used.

19 At 173 miles + 60.71 chs - Road bro E & W

20 " 173 " + 61.22 " wire fence, fall 05 links west
21 of the SE corner

22 174 mile - hollow iron post - brass caps on
23 top marked "Texas - New Mexico - Clark Boundary
24 1859 Mile Corner 174 etc." The boundary fence
25 is 51 links east and the N & S fence is
26 05 links east of the corner

27 At 174 miles + 3.67 fall 05 links west of the
28 NE corner of N & S fence extending west into
29 New Mexico, at 174 miles + 6.70 chs house
30 bro 21 chs west.

31 Description at 15 mile post on east line of
32 Parmer County

(over)

15 Mile post on East line Panner County.
An Earth mound & 3 pits. Wind mill hrs.
N 51° 18' W 181 varas, and another wind mill
hrs. S 34° 52' W

1104

543

THE STATE OF TEXAS)
GENERAL LAND OFFICE) I, J. H. Walker, Chief Clerk and
Acting Commissioner of the General Land Office of the
State of Texas, having been requested by letter dated
October 1st, 1913, signed James D. Hamlin, who appears
to be County Judge of Parmer County, to designate by
certificate the Geographical Center of Parmer County,
do hereby certify that I have, from the map and sur-
veys of that county and other data on file in this
office, ascertained the Geographical Center of Parmer
County to be a point 28075 vs. (14 miles and 1463 1/2
varas) west along the parallel from a point 82 varas
south of the 15th mile post on the east line of Parmer
County, or 28075 varas east along the parallel from
a point on the Texas and New Mexico state line (as
marked by joint commission in 1911) 640 5/10 vs.
N. O 04' 55" E. from the 174 mile post on said state
line.

IN TESTIMONY WHEREOF I hereunto
set my hand and affix the impress
of the Seal of the General Land
Office, this 10th day of October
A. D. 1913.

Comr. Genl. Land Office.

To Hon. James D. Hamlin,
County Judge Parmer County,
Farwell, Texas.

*This certificate should have been dated Oct. 31, 1913
the day it was issued, instead of Oct. 10 - which is a
typographical error -*

counter 33639

W. M. KNIGHT

J. N. S. SLATON

Knight & Slaton
ATTORNEYS AT LAW
HEREFORD, TEXAS

RECEIVED

NOV 15 1913

Referred to Map

772

November 13th, 1913.

Hon. J. T. Robison,
Austin, Texas.

Dear Sir:-

James D. Hamlin, county judge of Parmer county by a letter dated October 1st, 1913, requested that you designate the geographical center of said Parmer county.

On October 18th an election was held in said county to locate the county seat, and a contest of said election is now pending in the district court of said county.

On the 10th day of October, 1913, the Hon. J. H. Walker acting commissioner made a certificate concerning the geographical center of said county. Or rather he made a written statement how the geographical center might be found by a survey, provided the surveyors could locate the beginning points.

We are the attorneys for the contestants in the election contest case and it will be necessary in the trial of the contest to know where the geographical center of said county is. As we understand the meaning of the statute we think that you should designate some tract or survey of land in Parmer county ~~axxix~~ and make a certificate that a point within that particular survey is the center.

In numerous cases which we have examined we find that that Land Commissioners have so designated the geographical center. If we have to employ surveyors to locate this point as you have it now designated it will be considerable expense to the people of the county and also there will probably be errors or differences in each survey to such an extent that it will remain unceratin as to where the center is.

County Judge Hamlin was petitioned by the people of Parmer county and make the request of you as provided in the statutes and are very much interest in having the center designated specifically.

Trusting that you will see your way clear to designate some certain survey of land as the tract wherein the denter will be, we remain,

Yours very truly,
Knight & Slaton.

See Letter Book 1107 for answer - 11/18/13
220

Forwarded, Sep.

Mail Carbon to Hon. Jas. D. Howlin
together with Certified Sketch -

Replying to your letter of the 13th inst.
 relative to the certificate issued by this Department
 designating the geographical center of Parmer
 County, beg to advise that I have prepared
 a certified copy of a part of the official map of
 Parmer County now in use in this office, upon
 which has been designated the geographical
 center, ^{with reference to land surveys in that County} according to the certificate issued by
 this Department on the 10th day of October 1913,
 which plat I have this day mailed to the
 Hon. James D. Howlin, County Judge of
 Parmer County, which, when filed
 in connection with said certificate, should
~~fully~~ answer every purpose in locating said center -
 Herewith enclosed find blueprint of said plat -
 Resp -

RECEIVED
 CLERK
 1913



The State of Texas }
 General Land Office } I, J. T. Robinson, Commissioner of the General Land
 Office of the State of Texas do hereby certify that this plat correctly
 shows the position of the geographical center of Parmer County relative
 to the land surveys of said county as designated in the certificate issued
 by the Commissioner of the General Land Office on the 10 day of
 October 1913; and that said plat is a true and correct copy of
 the official map of Parmer County now in use in this office.
 In Testimony Whereof, I hereunto set my hand and cause to be af-
 fixed the impress of the seal of this office this 17 day of November
 A.D. 1913.

J. T. Robinson
 Commissioner of the General Land Office.

To Hon. James D. Hamlin,
 County Judge, Parmer County,
 Parwell, Texas.

*See letter to Dwight B. Slaton
 Dallas - Tex -
 Houston, Texas
 11-18-13*

see