



Certificate  
 I A. N. Lea County Surveyor of Pecos County  
 Texas do hereby certify that the foregoing  
 map is true and correct as to the location of  
 lines in the field completed July 31, 1935  
 July 31, 1935  
 A. N. Lea County Surveyor Pecos, Texas

33

Sketch File No. 33 46

Pecos County

Sk. by A. N. Lea

dated July 31, 1935

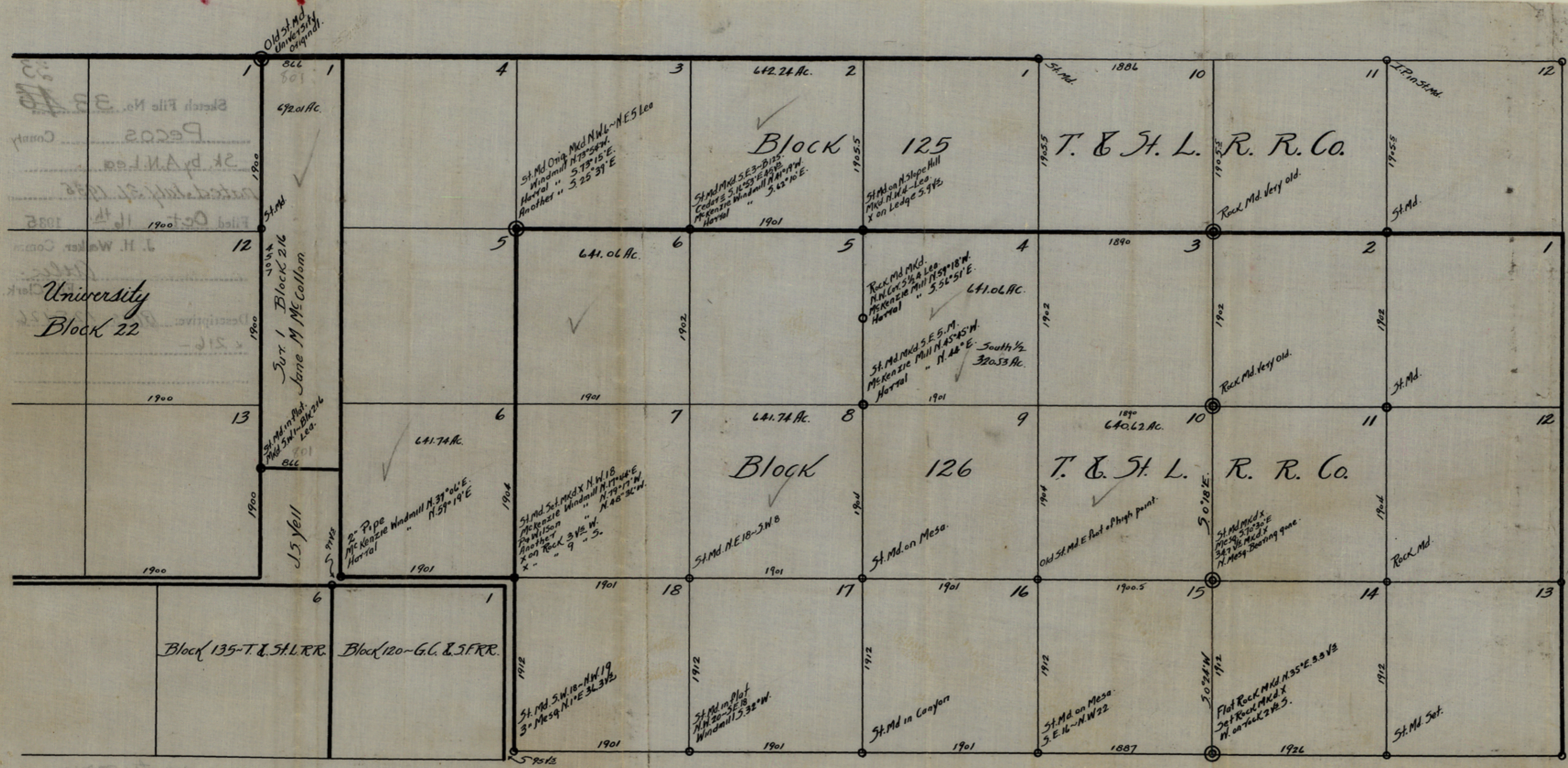
Filed Oct 16<sup>th</sup> 1935

J. H. Walker, Comr

Atty.  
File Clerk.

Descriptive: Blks 125-126  
& 216-





Certificate.  
 J. A. N. Lea, County Surveyor of Pecos County, Texas, do hereby certify that the foregoing Map is true and correct as taken from my work in the field, completed July 30, 1935.  
 July 31, 1935 Scale 1" = 1000' ±  
 J. A. N. Lea, Co. Surveyor, Pecos Co. Tex.

22 mi

504

counter 33713