

MAP

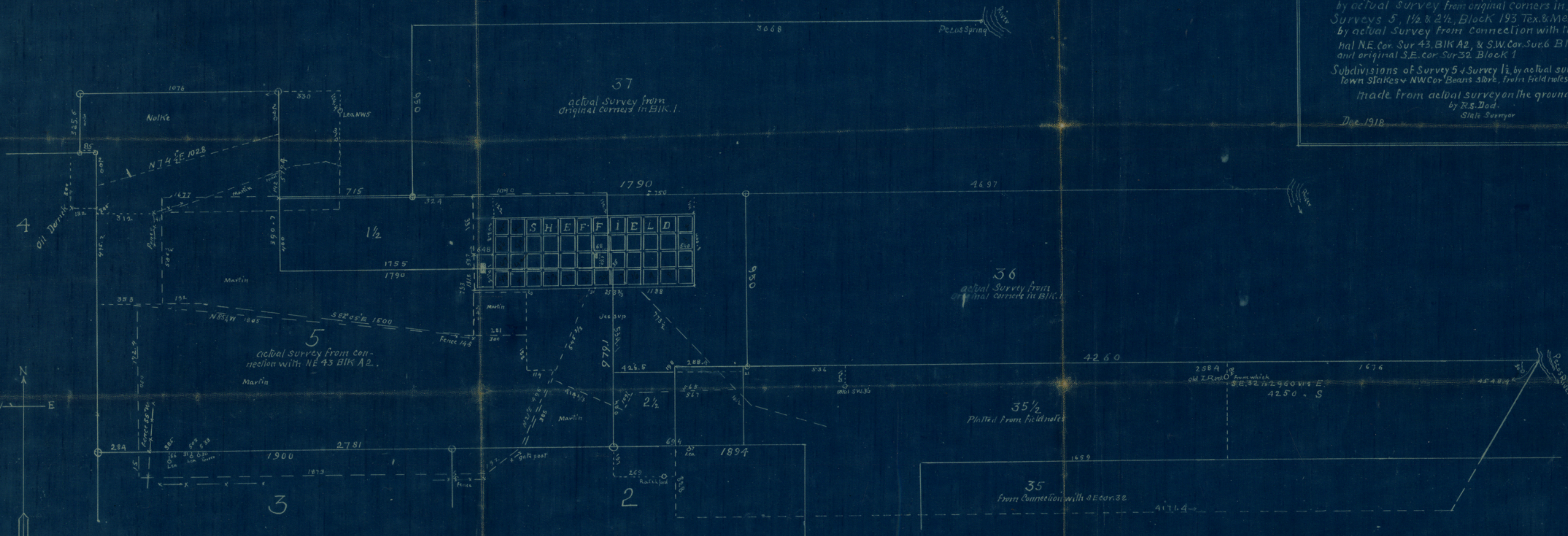
of
 Surveys 36 & 37 Block 1 I & G. N. R. R. Co.
 by actual survey from original corners in BIK 1
 Surveys 5, 1 1/2 & 2 1/2, Block 193 Tex. & Mex. R. R. Co.
 by actual survey from connection with the original
 NE. cor. Sur 43, BIK A2, & S.W. cor. Sur 6 Block C. 2,
 and original S.E. cor. Sur 32, Block 1

Subdivisions of Survey 5 & Survey 1 1/2, by actual survey from
 town stakes & Beans store, from field notes in deeds,
 made from actual survey on the ground

by R. S. Dod,
 State Surveyor

Dec. 1918

Jan. 1919



I R. S. Dod, State Surveyor, do hereby certify that the above plat is true and correct and that all line corners, marks, and all corners & distances are therein shown as found on the ground by actual survey made by me in the field according to law in Dec. 1918 & Jan. 1919
 Alpine Jan 13th 1919
 R. S. Dod
 State Sur.

Scale 400 Varas to 1 inch

counter 33790

77

2

62.

Pecos Co
Dods SK. of Sars. around
Shetfield.
Dated Jan. 13. 1919.

ny'