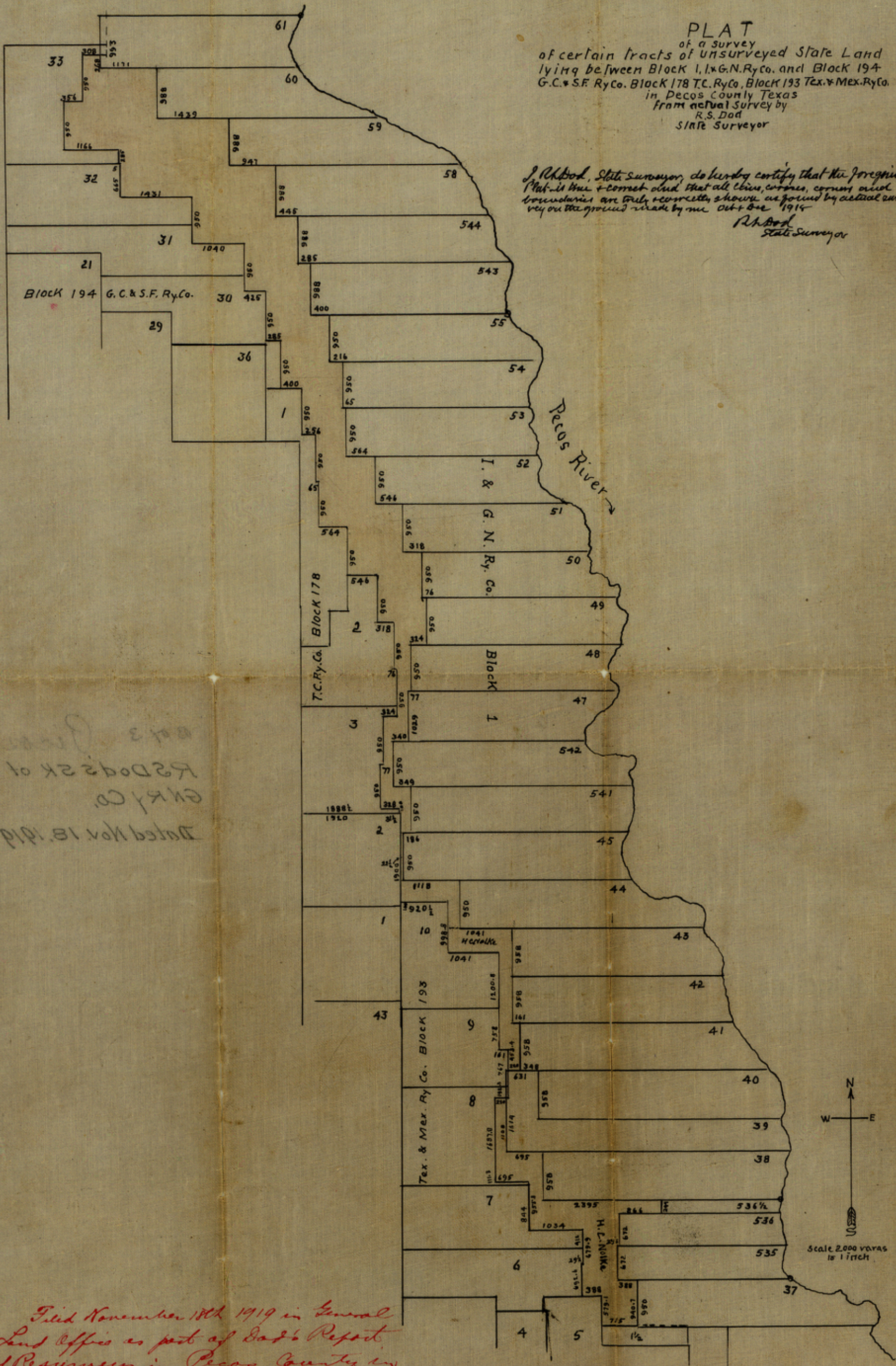


PLAT  
of a survey  
of certain tracts of unsurveyed State Land  
lying between Block 1, I. & G. N. Ry. Co. and Block 194  
G. C. & S. F. Ry. Co. Block 178 T. C. Ry. Co. Block 193 Tex. & Mex. Ry. Co.  
in Pecos County Texas  
from actual survey by  
R. S. Dod  
State Surveyor

I, R. S. Dod, State Surveyor, do hereby certify that the foregoing  
Plat is true & correct and that all lines, corners, courses and  
boundaries are truly & correctly shown as found by actual sur-  
vey on the ground made by me Oct 4<sup>th</sup> 1914  
R. S. Dod  
State Surveyor

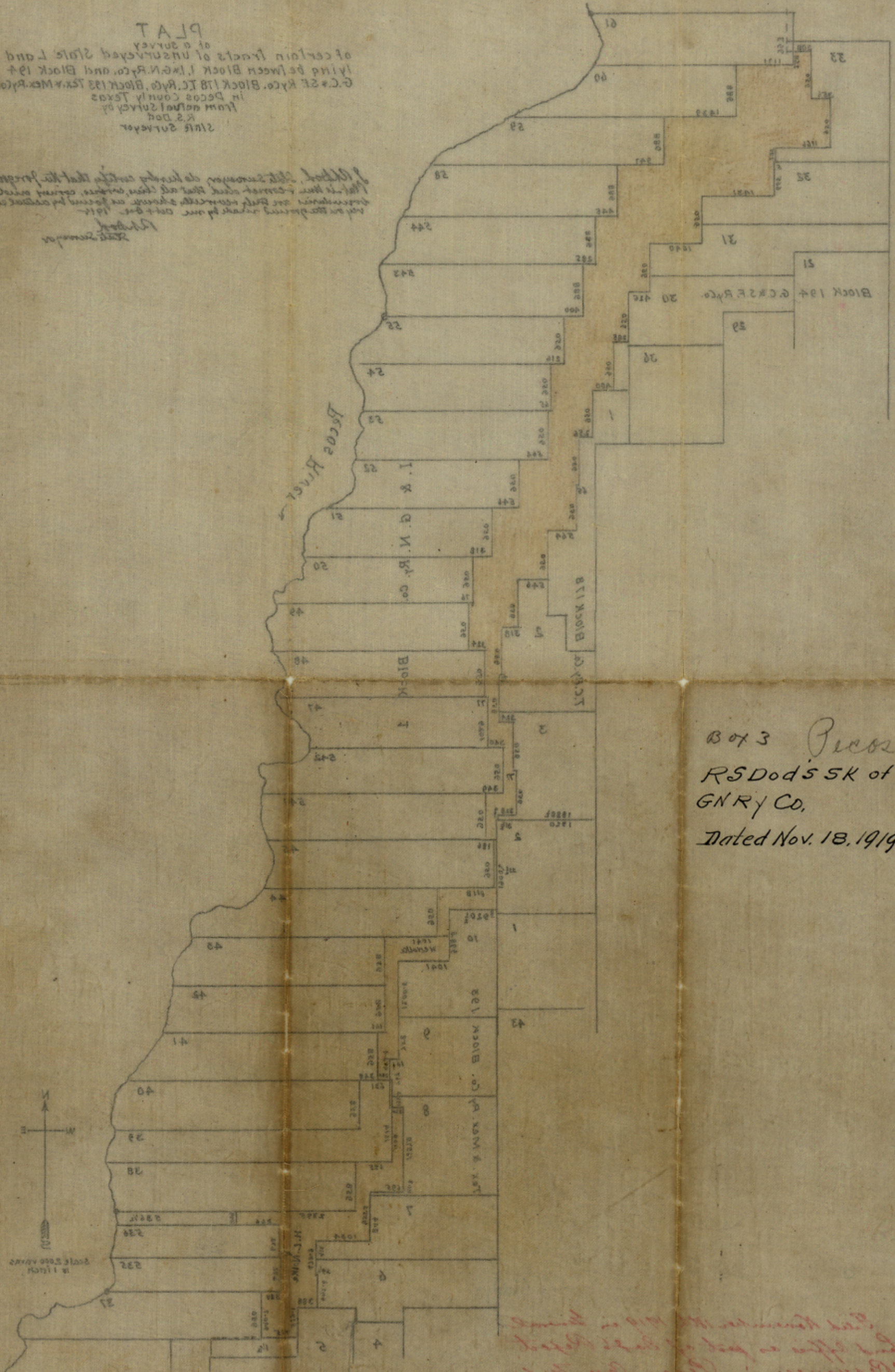


R. S. Dod's SR of Bk 1, I. & G. N. Ry. Co.  
 G. C. & S. F. Ry. Co.  
 Dated Nov 18, 1914

Filed November 18th 1914 in General  
 Land Office as part of Dod's Report  
 of Resurveys in Pecos County in  
 I. & G. N. Block 1.

PLAT  
 of certain tracts of unsurveyed State Land  
 lying between Block 1, G.N.Ry. Co. and Block 197  
 G.C. & S.E. Ry. Co. Block 178 T.C. Ry. Co. Block 193 T.C. Ry. Co.  
 in DeCos County Texas  
 from actual survey by  
 R.S. Dod  
 State Surveyor

*Block 197 Surveyor de l'india...  
 This is a survey of land...  
 not on the survey...  
 State Surveyor*



65.  
 Box 3 Pecos Co  
 R.S. Dod's SK of BIK No 1, 18  
 G.N.Ry. Co.  
 Dated Nov. 18, 1919.

*and after a part of said block  
 of Pecos Co. in DeCos County  
 was a block 2*

Rt

11/18/19 counter 33805