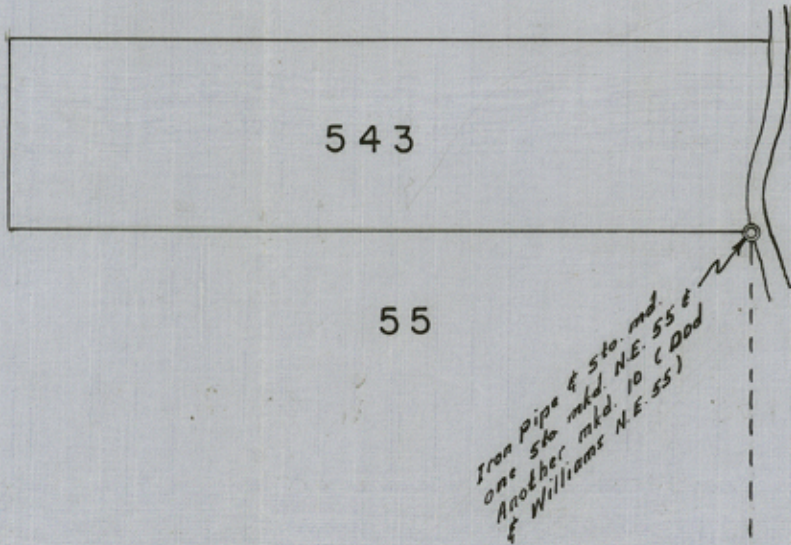


1901-2



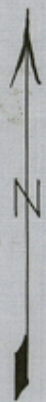
MAP SHOWING POSITION OF
CERTAIN SURVEYS IN BLK. I
I. & G.N.R.R.CO. PECOS COUNTY,
TEXAS

RECEIVED
AUG 23 1934
REFERRED TO MAP

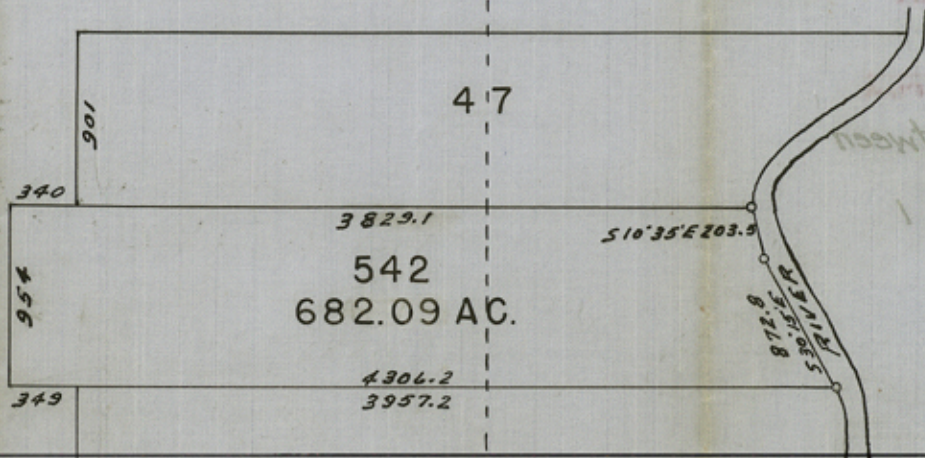
Surveyed by me on the ground in July, 1934

110/11

J.A. Simpson
Licensed State Land Surveyor

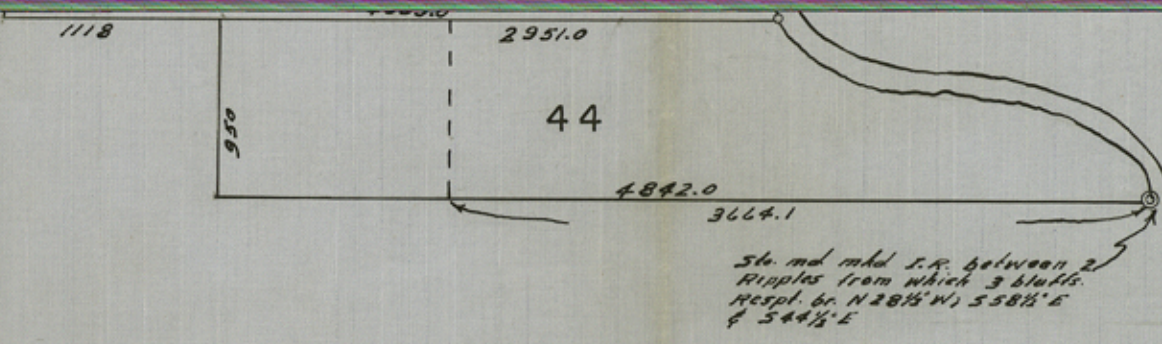


SCALE: 1" = 1000 VARAS



88
Pecos
Sketch File
Aug 25 1934
Bascom Giles Com'r
Yes
Connection line between
Sec 43 and Sec 44,
I. & G.N.R.R. Co., Blk. I
By J.A. Simpson
July 1934

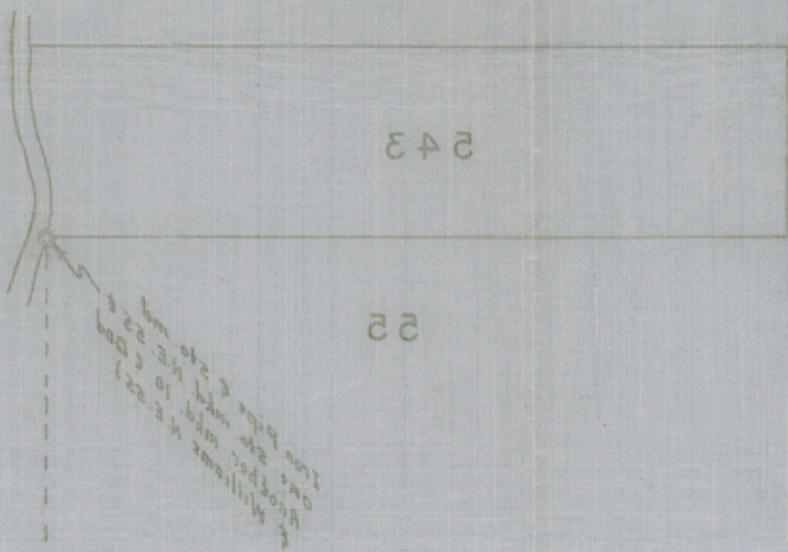
RECEIVED
AUG 10 1934
REFERRED TO MAP



0229
0101

county 33984

1601-3



MAP SHOWING POSITION OF
CERTAIN SURVEYS IN BLK. 1
I. & G.N.R.CO. PECOS COUNTY,
TEXAS

Surveyed by me on the ground in July, 1934

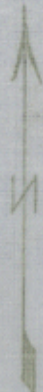
J.A. Simpson
Licensed State Land Surveyor

1168

RECEIVED
AUG 22 1949
REFERRED TO MAP

File No. 88
PECOS County

SCALE: 1" = 1000 YARDS

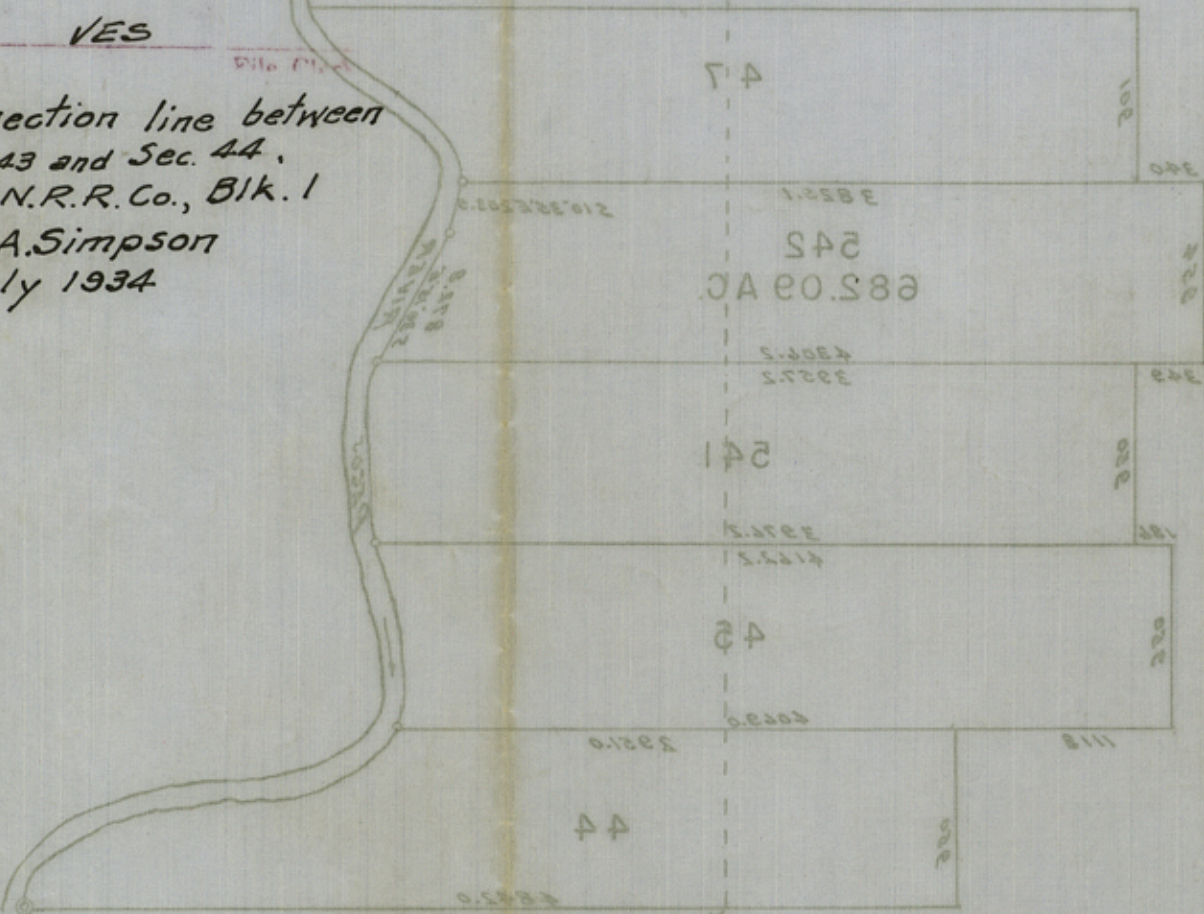


Sketch File

Filed Aug. 25 1949
Bascom Giles Com'r

VES

Connection line between
Sec. 543 and Sec. 44,
I. & G.N.R.R. Co., Blk. 1
By J.A. Simpson
July 1934



26 and 27 feet
width from north 2 line
to 100 ft. N.E. 25
& 240 ft.

RECEIVED
AUG 16 1949
REFERRED TO MAP

1101
0159