

File No. _____

PECOS
Sketch File

ty

Filed Sept. 7 19 55

J. EARL RUDDER, Com'r.

By

V. E. Hering

Sketch and Report of a
survey of part of T.C. Ry.,
Blk. 178 and E.L. & R.R.,
Blk. C-3.

By J. B. Zant
Aug. 26, 1955.

Sketch File 93

A³

counter 33990

D-946

PECOS CO. SKETCH FILE 93

J. B. ZANT

LICENSED STATE LAND SURVEYOR

MIDLAND, TEXAS

Honorable J. Earl Rudder,
Commissioner of the
General Land Office,
Austin, Texas

*see Pecos Co.
Rolled Sk. JAS-1*

Dear Sir:

I am handing you herewith a report on a survey recently made by me in Pecos County, Texas in connection with corrected field notes on surveys Nos. 9, 10, 21 and 22 in Block 178, Texas Central Railway Company in the said County.

I began this survey at an old stone mound on top of a mountain at the N. W. corner of survey No. 3, Block C-4 GC&SF RY. CO. This is the stone mound referred to in the Yates Area Litigation in Pecos County as the "Perry Hill" corner and adjudged to be the original N. W. corner of said survey.

In the various suits in this area the courts have directed that the proper way to determine the north point is by turning 25 degrees to the right from the west rim of the square topped mountain in the valley when occupying the said N. W. corner of Survey 3, Block C-4, G. C. & S. F. Ry. Co. This is an isolated mountain in the valley with a cap stone that has a near perpendicular bluff in the west side.

In making this survey I started from the above named N. W. corner of said survey No. 3 and ran east a distance of 1979.9 varas to another old stone mound the original corner N. W. corner of Survey No. 4 of said Block.

Thence N. 88° - 32' E. 1952.4 varas to another old stone mound at the North East corner of said Survey No. 4, also accepted as an original corner.

Thence East 1937.2 varas and south 1906.4 varas to the old stone mound at the N. E. corner of Survey No. 18 in Block C-3 EL&RR RY. CO., this corner is generally recognized as the original corner of said survey.

Thence S. 1 - 44' W. a distance of 7807.8 varas to an old stone mound the original Southwest corner of survey No. 13 in said Block C-3;

RECEIVED

SEP 7 1955

GENERAL LAND OFFICE

A

counter 33991

Page 2
Report by J. B. Zant
Licensed State Land Surveyor

Thence N. 89 - 19' E. a distance of 1918.6 varas to an old stone mound, the original S. E. corner of said Survey No. 13 in the said block.

Thence N. 88 - 57' E. a distance of 1911.9 varas to an old stone mound, the original S. E. corner of survey No. 12 in said Block.

Thence North 1929.7 varas to a point,

Thence East 1895.1 varas to an old stone mound the original N. E. corner of Survey 9, of said Block.

Returning to the old stone mound at the S. W. corner of said Survey No. 13 in said Block, I ran,

Thence S. 89° 12' W. 1899.8 varas to an old stone mound, the original Southwest corner of Survey No. 16 in said Block.

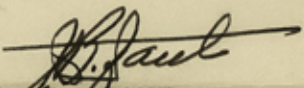
Thence S. 89° 49' W. 1905.0 varas to an old stone mound the original S. W. corner of Survey No. 69 in said Block C-4.

Thence S. 89° 36' W. 1906.9 varas to an old stone mound the original S. W. corner of Survey No. 72 in said Block C-4.

The method of construction of these surveys is shown on the plat attached to the and made a part of this report.

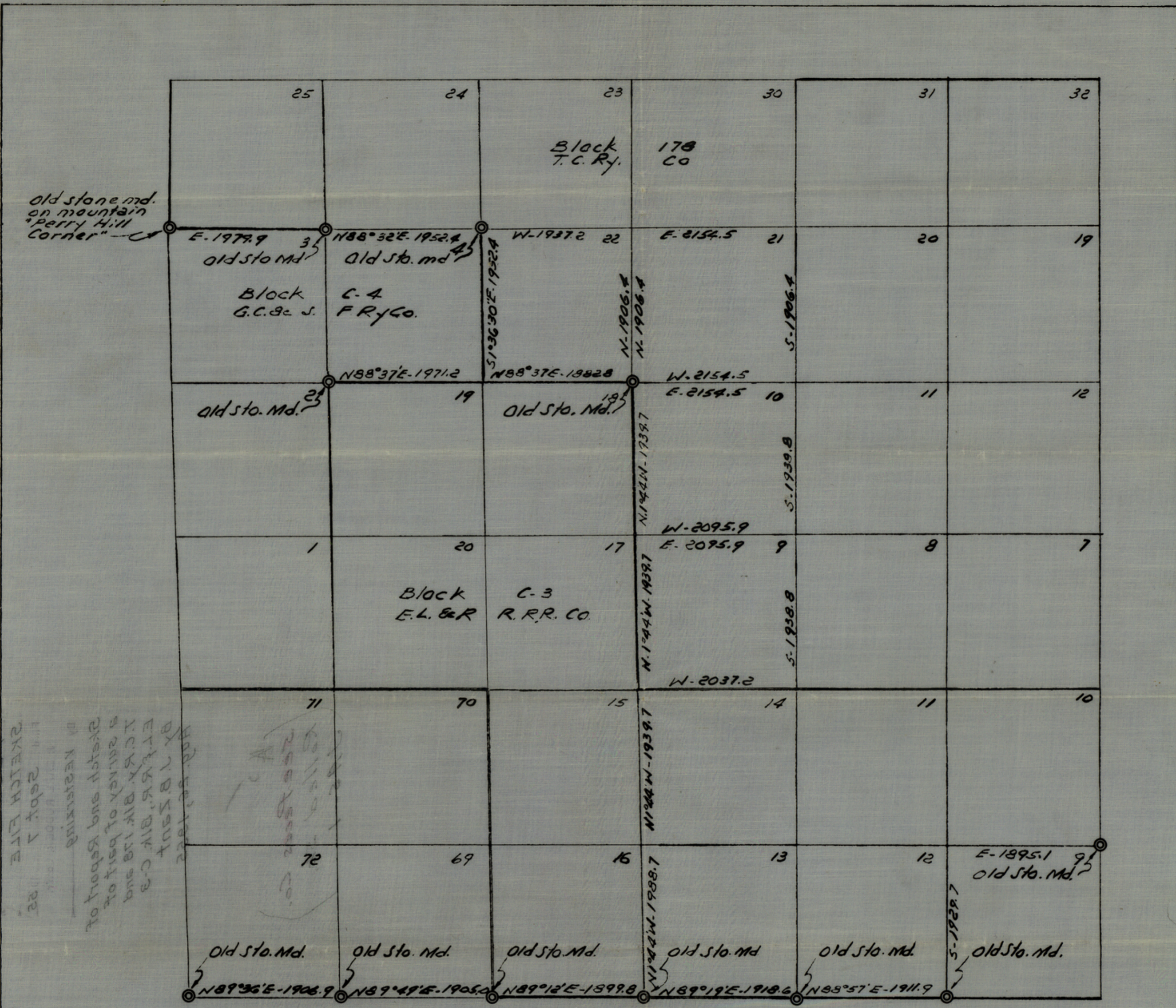
In determining the East line of surveys Nos. 9, 10 and 21, Block 178, T. C. Ry. Co., I have projected a line north from the stone mound at the Southeast corner of Survey No. 13 in said Block C-3. This is on the course determined at the Northwest corner of Survey No. 3 in said Block C-4. The North-South distances across Surveys 14, 9 and 10, being an equal one-third of the total northing from the Northeast corner of Survey No. 9 above described to the Northeast corner of Survey No. 18, also above described.

Respectfully submitted,


J. B. ZANT
Licensed State Land Surveyor



A



old stone md.
on mountain
"Perry Hill
Corner" - C

Block
G.C. & S.
C-4
F.R.Y. CO.

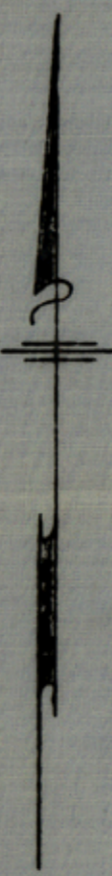
Block
E.L. & R.
C-3
R.R.R. CO.

RECORDED
SEP 7 1955
GENERAL LAND OFFICE

BY J.B. ZANT
L.S. 178 and
L.S. 179 and
Sketch and Report of
BY REGISTERING

RECEIVED
SEP 7 1955
GENERAL LAND OFFICE

J.B. Zant do hereby certify that
this survey was made by me
on the ground and that it is
correct.
J.B. Zant
Licensed State Land Surveyor
Midland County, Texas



Sketch in Pecos County,
Texas
Showing a portion of Blocks
C-3, C-4 and 170 as determined
by an actual survey on the
ground.
Scale: 1" = 1000 ft. J.B. Zant
August 26, 1955 Midland,
Variation: 11°30' East

