

I, JACK SILLIMAN, COUNTY SURVEYOR OF PECOS COUNTY, TEXAS, DO HEREBY CERTIFY THAT THE ABOVE SKETCH GIVES A TRUE AND CORRECT DESCRIPTION OF THE RESULTS OF A SURVEY MADE BY ME ON THE GROUND, AND ACCORDING TO LAW, AND THAT THE LIMITS, BOUNDARIES, AND CORNERS, WITH THEIR MARKS, NATURAL AND ARTIFICIAL, ARE DESCRIBED JUST AS I FOUND AND SET THEM ON THE GROUND.

SURVEYED - JULY 10-19, 1957

*Jack Silliman*  
 COUNTY SURVEYOR, PECOS COUNTY, TEXAS

RECEIVED  
 AUG 30 1957  
 GENERAL LAND OFFICE

County 33988

GENERAL LAND OFFICE  
AUG 30 1921

REGISTERED

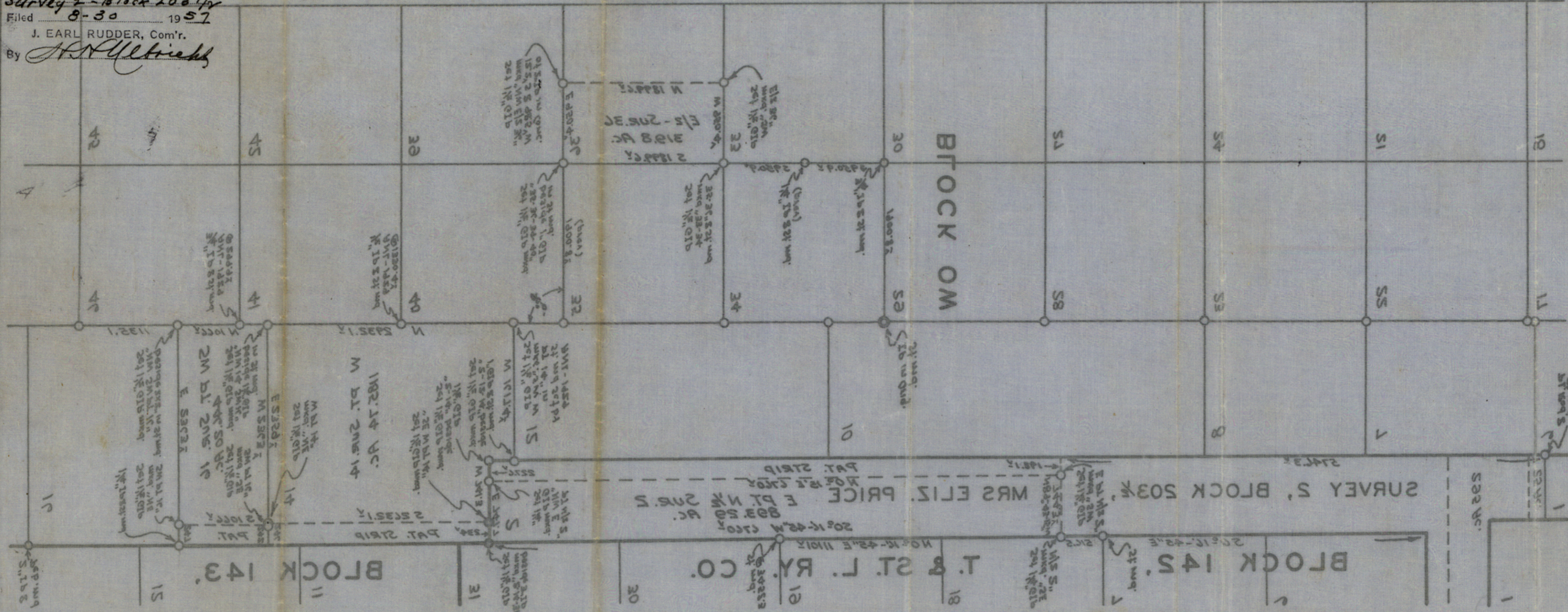
COUNTY SURVEYOR, PECOS COUNTY, TEXAS

SURVEYED - JULY 10-19, 1921

SET THEM ON THE GROUND, NATURAL AND ARTIFICIAL, ARE DESCRIBED JUST AS I FOUND AND CORNERS, WITH THEIR MARKS, AND ACCORDING TO LAW, AND THAT THE LIMITS, BOUNDARIES, AND THAT THE ABOVE SKETCH GIVES A TRUE AND CORRECT DESCRIPTION OF THE RESULTS OF A SURVEY I, JACK BILTIMAN, COUNTY SURVEYOR OF PECOS COUNTY, TEXAS, DO HEREBY CERTIFY

*Jack Biltiman*

File No. **96**  
**Pecos** County  
14, 16, 34, 35, 36 - Block 14  
Survey 2 - Block 200 1/2  
Filed **8-30** 19**21**  
J. EARL RUDDER, Com'r.  
By *J. H. Ullrich*



Counter 33999