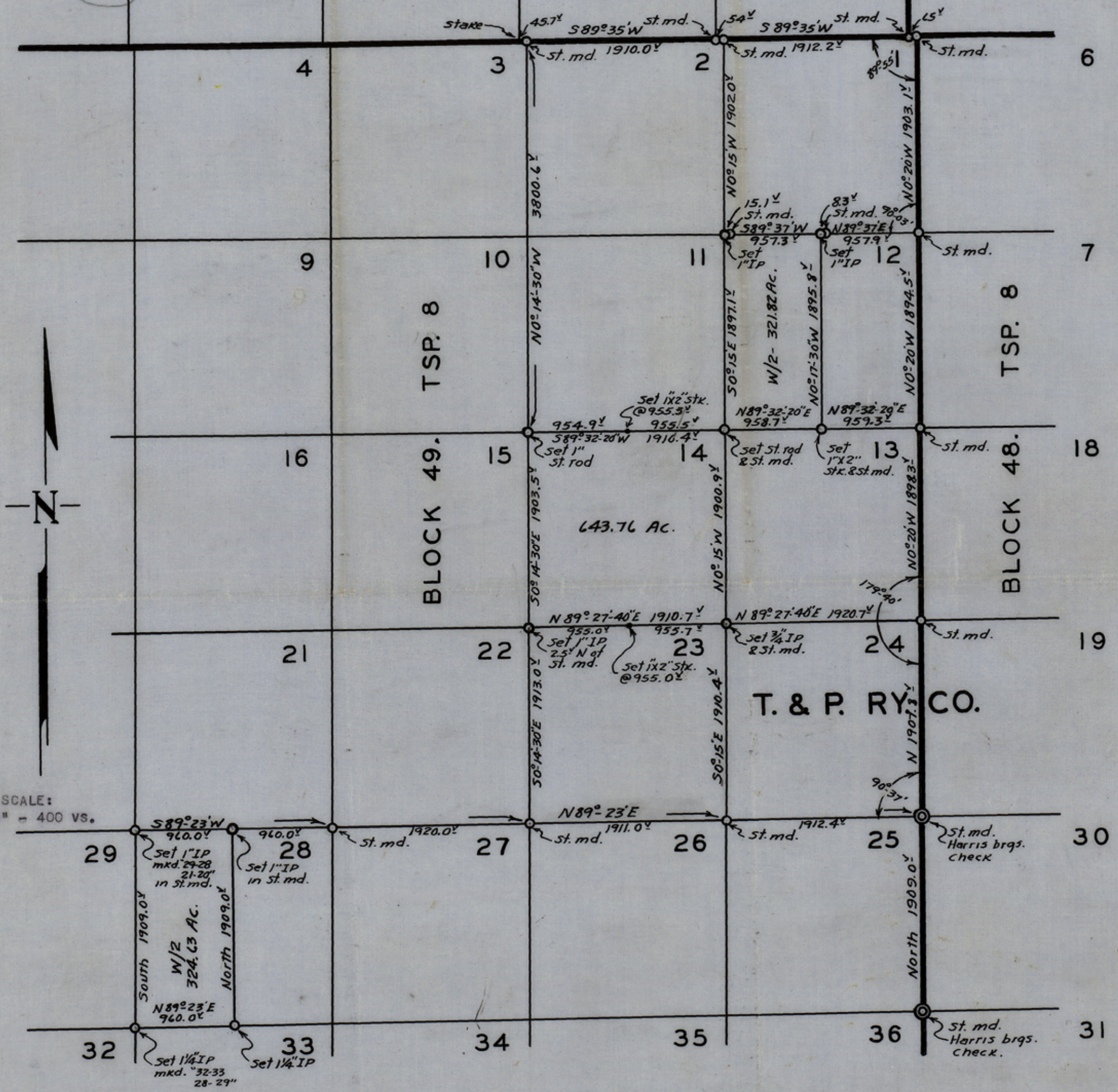


D-890

Sketch by Silliman  
1-27-60  
Filed  
BEE ALLEGRA Com'r  
Pecos County

27 28 29 30 25  
BLOCK C-1 PUBLIC SCHOOL LAND BLK C-2



I, JACK SILLIMAN, COUNTY SURVEYOR OF PECOS COUNTY, TEXAS, DO HEREBY CERTIFY THAT THE ABOVE SKETCH GIVES A TRUE AND CORRECT DESCRIPTION OF THE RESULTS OF A SURVEY MADE BY ME ON THE GROUND (FINISHED JANUARY 6, 1960), AND ACCORDING TO LAW, AND THAT THE LIMITS, BOUNDARIES, AND CORNERS, WITH THE MARKS OF SAME, NATURAL AND ARTIFICIAL, ARE DESCRIBED JUST AS I FOUND AND SET THEM ON THE GROUND.

RECORDED ON PAGE 171, VOLUME 13 OF THE FIELD NOTE RECORDS OF PECOS COUNTY, TEXAS

*Jack Silliman*  
COUNTY SURVEYOR, PECOS COUNTY, TEXAS

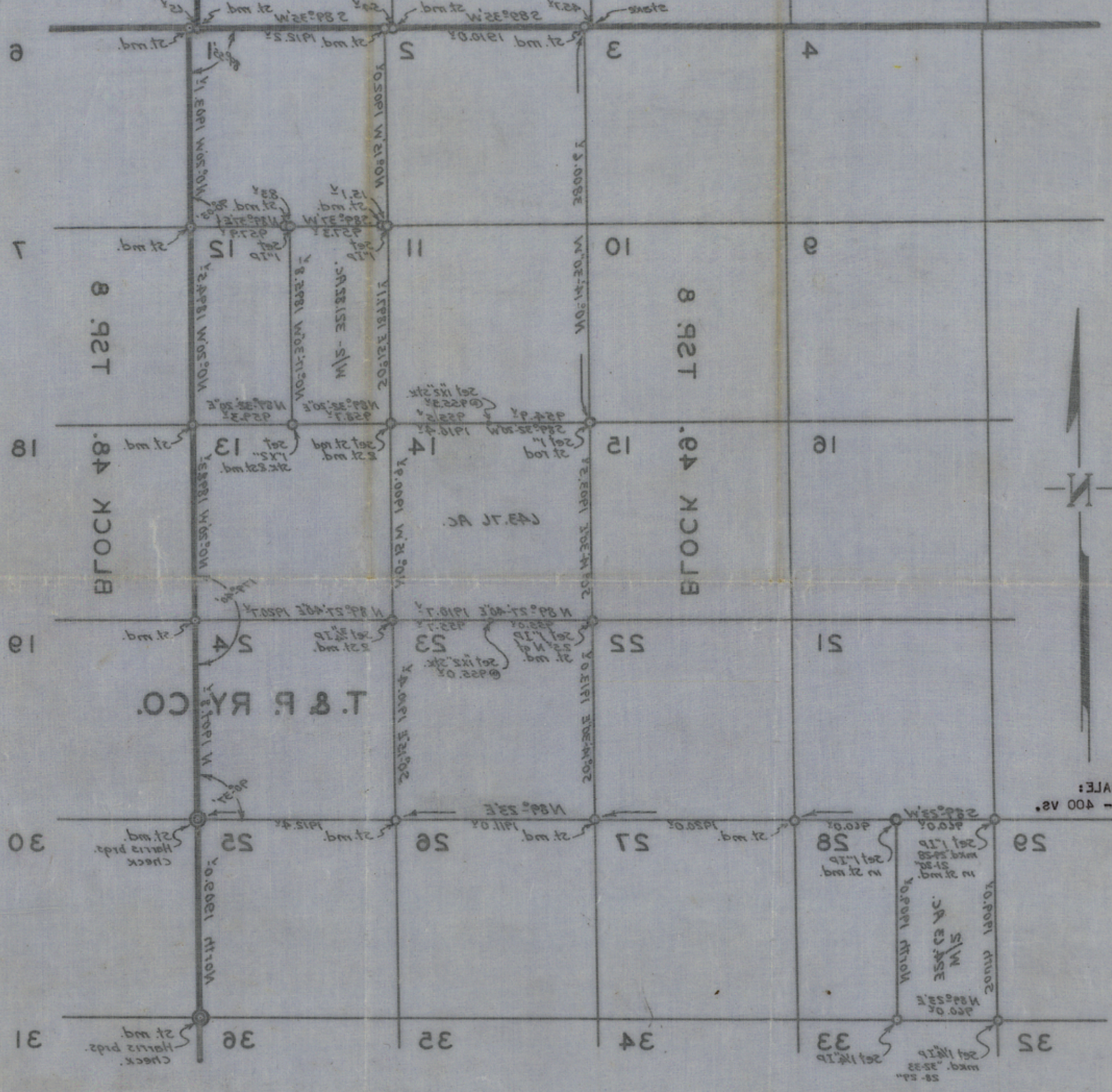
RECEIVED  
JAN 27 1960  
General Land Office

counter 134012



File No. 101  
 Pecos County  
 Sketch by Silliman  
 Filed 1-27 1960  
 BILL ALLCORN, Com'r.  
 By *[Signature]*

BLK C-5  
 PUBLIC SCHOOL LAND  
 BLOCK C-1



I, JACK SILLIMAN, COUNTY SURVEYOR OF PECOS COUNTY, TEXAS, DO HEREBY CERTIFY THAT THE ABOVE SKETCH GIVES A TRUE AND CORRECT DESCRIPTION OF THE RESULTS OF A SURVEY MADE BY ME ON THE GROUND (FINISHED JANUARY 9, 1960), AND ACCORDING TO LAW, AND THAT THE LIMITS, BOUNDARIES, AND CORNERS, WITH THE MARKS OF SAME, NATURAL AND ARTIFICIAL, ARE DESCRIBED JUST AS I FOUND AND SET THEM ON THE GROUND.

RECORDED ON PAGE 171, VOLUME 13 OF THE FIELD NOTE RECORDS OF PECOS COUNTY, TEXAS

*[Signature]*  
 COUNTY SURVEYOR, PECOS COUNTY, TEXAS

RECEIVED  
 JAN 27 1960  
 General Land Office

Counters 34013