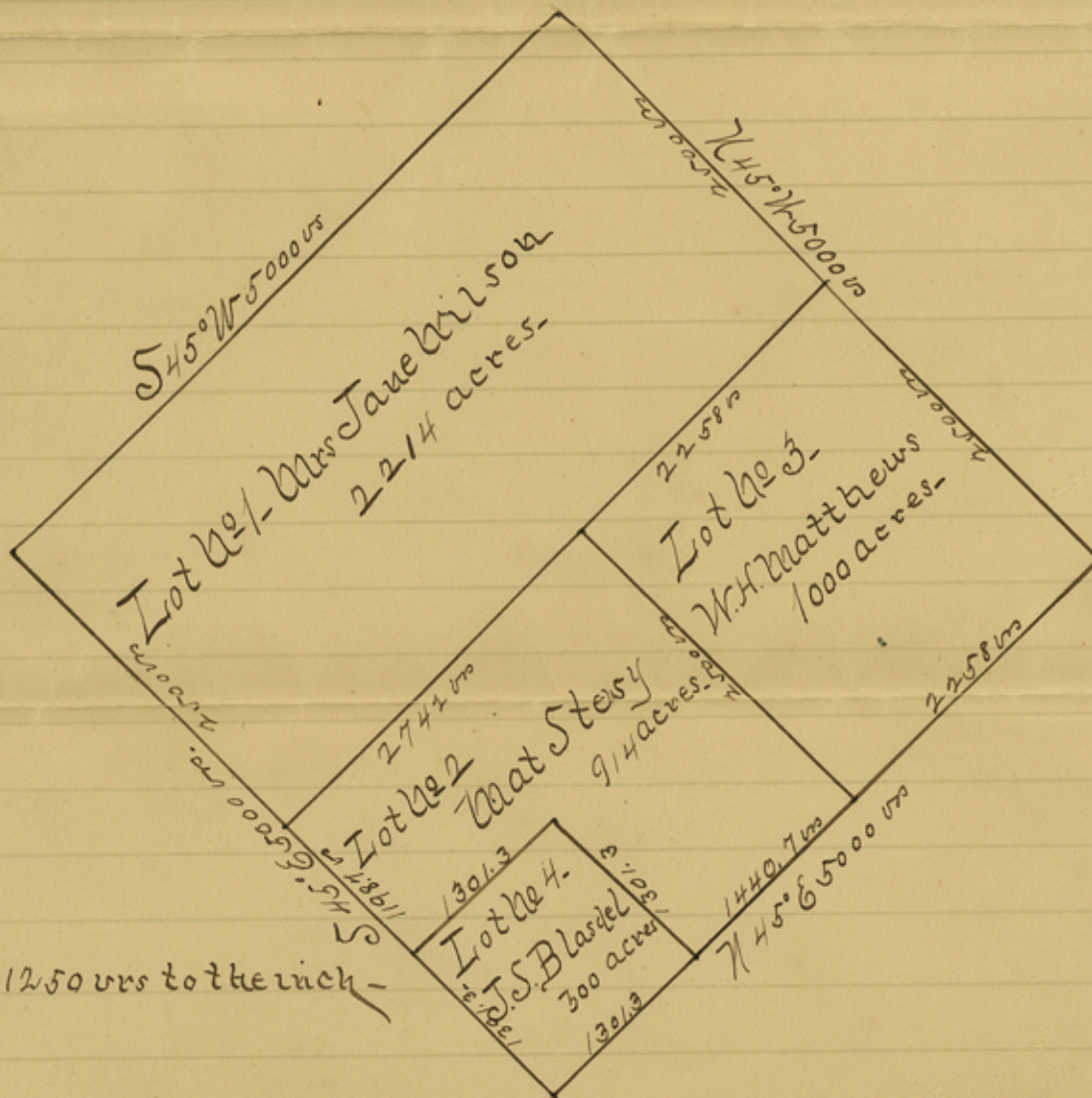


Mrs Jane Wilson
Mat Stussy &
W. H. Matthews
No 1933 vs
J. S. Bloddel

December 6th A. D. 1889.

This day this cause came on
for trial and parties plaintiffs
and defendant appeared by
Counsel and by written agreement
filed in this cause partition and divide the land
described in plaintiffs petition to-wit:
The H. E. Watson league of land situated in Park
County Texas, bounded and described as follows:
Beginning at the S.W. corner of the Lowery, T. Hampton
league, Thence N45°W with said Hampton S. 7th B. line
at 2320 on a prong of double branches, at 5000 on Hamp-
ton's N.W. corner, from which a White Oak 12 in in dia
brs N14°E 1500 and a Black Oak 15 in in dia brs N31°E 1900
the same being the N.E. corner of said Watson League
Thence S45°W 4000 on with line lead to a prong of double branches
at 1600 on another prong of double branches, at 2450 on a small
ravine 2600 on a road at 4080 on a small branch at 5000 on
to cor from which a pine 22 in in dia brs S41°W 500 on Do 18 in in
dia brs S85°E 500 on. a White Oak 10 in in dia brs S45°E 1000 on.
Thence S45°E at 1000 on Small branch 2770 on Spring branch at 5000 on
a stake from which a Sweet Gum 18 in in dia brs S70°E 2200 on
Do 15 in in dia brs S85°W 2400 on. Pine 22 in in dia brs S38°E 800 on
Thence N45°E 5000 on to the place of beginning, containing
Forty four hundred and Twenty eight acres of land:
So that the portions thereof allotted to each of the parties
to this suit will be as shown by the following plot -

Platt of K.E. Watson League
and Subdivisions-



Scale 1250 vrs to the inch-

The portions of said League of land as herein divided, set apart and allotted to the several parties to this suit are described by metes and bounds as follows:

To W.H. Matthews of Park County Texas, 1000 acres of said land:
Beginning at the S.W. Corner of the Lowery T. Hampton league, the same being the S.E. corner of the said Watson Lea - Thence $N45^{\circ}W$ 2500 vs to corner in S.W. B. line of said Hampton league -
Thence $S45^{\circ}W$ 2258 vs to corner. Thence $S45^{\circ}E$ 2500 vs to the S.B. line of said Watson Lea. Thence $N45^{\circ}W$ with said S.B. line 2258 vs to the place of beginning:

To Mat Stoney of Harris County Texas, 914 acres of said land:
Beginning 1301.3 vs $N45^{\circ}E$ from the S.W. Cor of said Watson Lea. Thence $N45^{\circ}E$ with S.B. line of said league 1440.4 vs to cor on said line. Thence $N45^{\circ}W$ 2500 vs to W.H. Matthews N.W. corner Thence $S45^{\circ}W$ 2742 vs to the N.B. line of said league Thence $S45^{\circ}E$ 1198.7 vs to corner. Thence $N45^{\circ}E$ 1301.3 vs to corner Thence $S45^{\circ}E$ 1301.3 vs to the place of beginning:

To Mrs Jane Wilson of Angelina County Texas 2214 acres of said land, Being the North half of said league; Beginning at the N.W. corner of the L.T. Hampton Lea, the same being the N.E. cor of the H.E. Watson Lea, from which a White Oak 12 in in dia vs $N14^{\circ}E$ 15 vs and a Black Oak 15 in in dia vs $N31^{\circ}E$ 19 vs - Thence $S45^{\circ}W$ 400 vs a prong of double branches, at 1600 vs another prong of double branches at 2450 vs a small ravine, at 2600 vs a road at 4030 vs a small branch at 5000 vs corner from which a pine 22 in in dia vs $S71^{\circ}W$ 6 vs. Do 18 in in dia vs $S85^{\circ}E$ 6 vs. a White Oak 10 in in dia vs $S45^{\circ}E$ 10 vs - Thence $S45^{\circ}E$ at 1000 vs small branch 1770 vs spring branch at 2500 vs cor. in N.B. line of said Watson league -
Thence $N45^{\circ}E$ 5000 vs to the place of beginning:

R²

To J. S. Blasdel of Caldwell County - Texas 300 acres of said land:
Beginning at the S.W. corner of said Watson Lea. from which
a Sweet Gum 18" in dia brs S70°E22'00". Do 15" in dia brs S85°W
24'00" Pine 24" in dia brs S38°E8'00". Thence N45°E 1301.3 to corner in
S.B. line of said Watson Lea, Thence N45°W 1301.3 to corner
Thence S45°W 1301.3 to corner in N.B. line of said league -
Thence S45°W 1301.3 to corner in N.B. line of said league -
Thence S45°E 1301.3 to the place of beginning.

It is therefore considered, ordered, adjudged and decreed by
the Court that the title in and to the tract of land herein
set apart to the respective parties to this suit be vested
in such party to whom allotted, as against each of the
other parties herein, and that such party have his or her
writ of possession therefor: It is further ordered that
each of the parties to this suit be divested of any and all
interest of in and to said H. E. Watson League of land
as hereinbefore described, save as to the portion hereof
herein allotted and set apart to him -

It is further ordered, that the Plaintiffs to this suit
pay all costs incurred herein, for which execution
may issue -

The State of Texas J. W. D. Willis Clerk of the District
Court of Polk County Texas do hereby
Certify that the above and foregoing is a true and
Correct Copy of the Decree of partition in the Cause
Mrs Jane Wilson Mat Stuey and W. H. Matthews vs J. S. Blasdel
No 1933, as the same appears on pages 406, 407 and 408 Book
"F" Minutes of the District Court of Polk County Texas

In testimony whereof Witness my hand and seal
of office in Livingston this the 10th day
of December A.D. 1889

W. D. Willis Clerk Dist Court
Polk County Texas

No 1933 31

Polk County.
Mat Steussy et al

vs

J. S. Blasdel

Certified Copy of
Decree of Partition of
W. E. Watson League

Filed in the General Land Office
February 18th 1890

R. W. Shulley

United States Chief Clerk.

2/18/90

4/15/90

R4

