

HOWARD TRIGG  
COUNTY SURVEYOR

980

RECEIVED

OCT 8 1920

AMARILLO, TEXAS. October, 5", 1920

Hon. J. T. Robison,  
Austin, Texas.  
Dear Sir:-

Referred to Map

I have a contract and agreement with the owners of Block 1 B.S.&F. Potter Co. to resurvey the entire block.

I have gone on the ground and made a preliminary survey and connected all of the original controlling corners that could be found, and have prepared a map showing what was found of the remaining original corners, and the courses and distances between them. And from this I will ask you to give me instructions as to the resurvey of this block.

There are only two original corners of Block 1 B.S.&F. which can be identified at the present time, viz. the S. W. corner of survey No. 34 and the S. W. corner of survey No. 56. The S. W. corner of survey No. 12 was identified from other corners placed by W. D. Twichell a number of years ago when the S. W. corner of survey No. 12 then existed.

From the first two corners mentioned I have extended lines in an easterly and southerly direction perpendicular and parallel to a true south line drawn from the original N. E. corner of survey No. 2 Block 3 A.C.H&B.

These lines average 1915 yrs. each from the N. E. corner of said survey No. 2 to the N. E. corner of survey No. 42 Block 1 B.S.&F.

I have also extended a line easterly from the S. W. corner of survey No. 12 Block 1 B.S.&F., perpendicular to the central south base line, to the S. E. corner of survey No. 1 Block 1 B.S.&F. All the courses shown on this map are compared to the central base line drawn south from the original N. E. corner of survey No. 2 Block 3 A.C.H&B.

For the west line of the block I connected the S. W. corner of said survey No. 12 to the original N. W. corner of survey No. 18 Block M3.

II

counter 34378



HOWARD TRIGG

COUNTY SURVEYOR

AMARILLO, TEXAS.

For the North lines of 51 and 52 I show parallel with the north lines of 13 and 16 Block 3 G.&M. and continued the same construction south to the S. E. corner of survey No. 35 which is projected westerly on the same course from its original S. E. corner. At the S. W. corner of survey No. 17 Block M3 I found the original Cotton-wood tree with its marks but the position of the bearing pile of stone is in a low place and I believe if it is there it is under several feet of earth where it has filled in.

At the S. W. corner of survey No. 56 we found an old cedar stake in mound but a cotton-wood tree on the course and distance called for is hardly probable as it falls on top of the plains where the cotton-woods never grow naturally. They always grow on draws and creeks where it is close to water. I have shown the same excess on the north line of surveys 43, 44, 45 and 46 as there is on the north line of Block 1 S.K.&K.

North of these surveys I have connected the original S. E. corner of survey No. 35 Block 1B. S.&F. and the original N. W. corner of survey No. 13 Block M3 with a straight line and have shown the comparative course on the map. The map will show further the more minute construction of other lines. I have also prepared a working sketch from the original field notes on record here and am sending you a copy of same for the purpose of comparison. You can readily check the correctness of this sketch from your records there. I have prepared this working sketch in order to expedite matters and will appreciate an early reply.

Yours very truly,

*Howard J. Trigg*

II'

counter 34379



Potter County  
Sketch file No. 1.

Filed in the Genl.  
Land Office July 26/82  
by Maddox Bros & Anderson

S-40334

\$1  $\frac{75}{100}$

counter 39380



1

Potter Co.

Sketch-1

Tracing Map of Potter Co  
JULY 26 1884

~~at what is left May 5 1915~~

counter 34381

field notes  
and other papers  
of this survey  
1884

THE STATE OF TEXAS

County

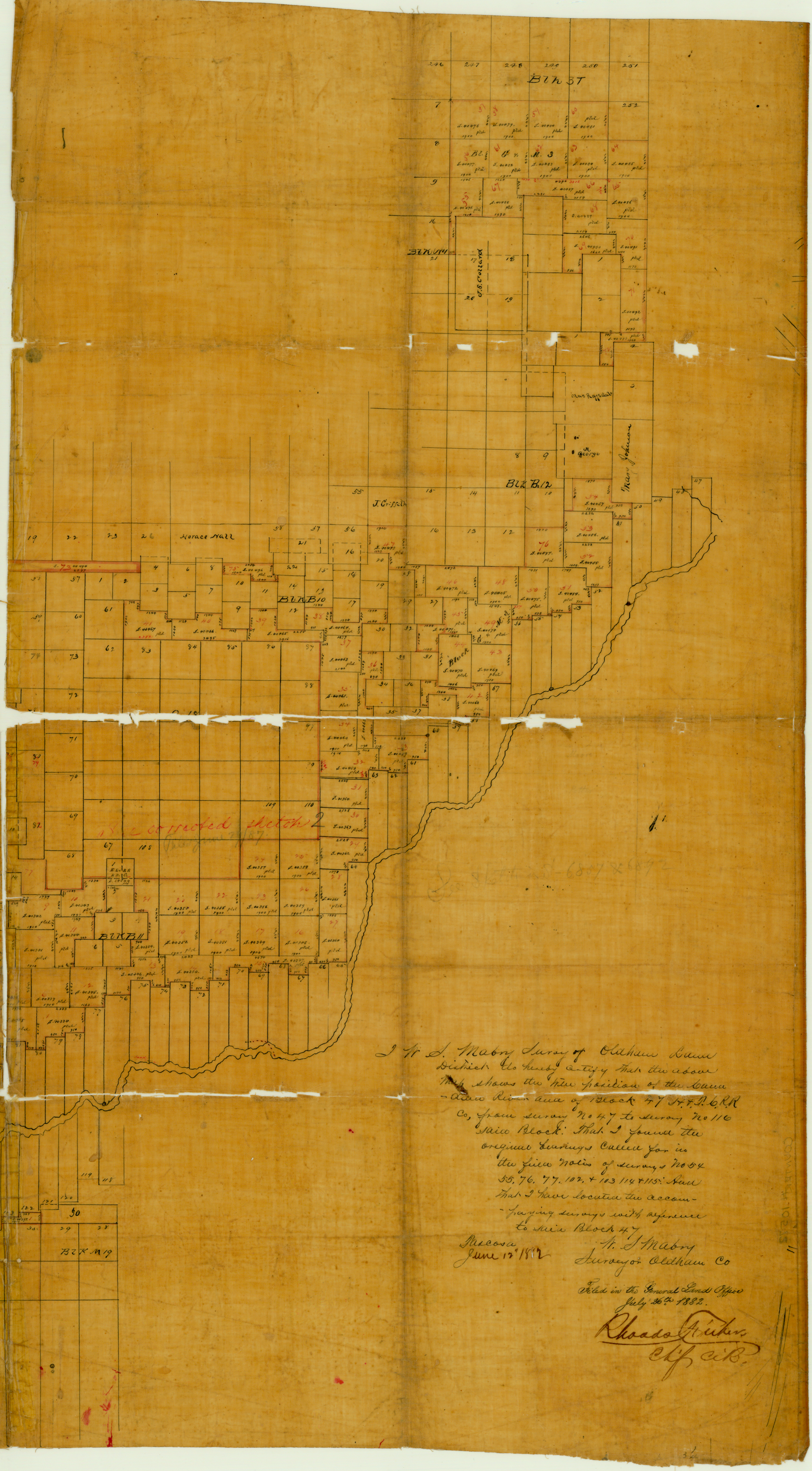
Original Public School  
Book No.  
Register No.

under the provisions of Chapter No. CXLVII of the Acts of the 30th Legislature, approved April 10, 1907,  
appropriated to the Common Free Schools, by the Act of the 17th Legislature, approved June 10, 1883, and re-enacted

and survey is No. Block No. Public Free Schools, situated in

County, State of Texas, from the county site





I H. J. Mabry Survey of Calkins Bend  
 District, Kentucky, City and Town of  
 New Albany, shows the plan of said  
 - also the area of Block 47 of B. & K.  
 Co., from survey of 1817 to survey of 1810  
 said Block. That I found the  
 original surveys called for in  
 the five notes of surveys No. 84  
 85, 76, 77, 107, & 103, 114 & 115: and  
 that I have located the accom-  
 -panying surveys with reference  
 to said Block 47.

Messrs  
 June 13 1832  
 H. J. Mabry  
 Surveyor Calkins Co

Filed in the General Land Office  
 July 26<sup>th</sup> 1832.

Rhoads Fisher  
 Clk. C. B.

NOTICE: This map must not be  
 removed from the office.  
 SEE OFFICE STAFF OF THE  
 SURVEYING DIVISION.

NOTICE: This map must not be  
 removed from the office.  
 SEE OFFICE STAFF OF THE  
 SURVEYING DIVISION.