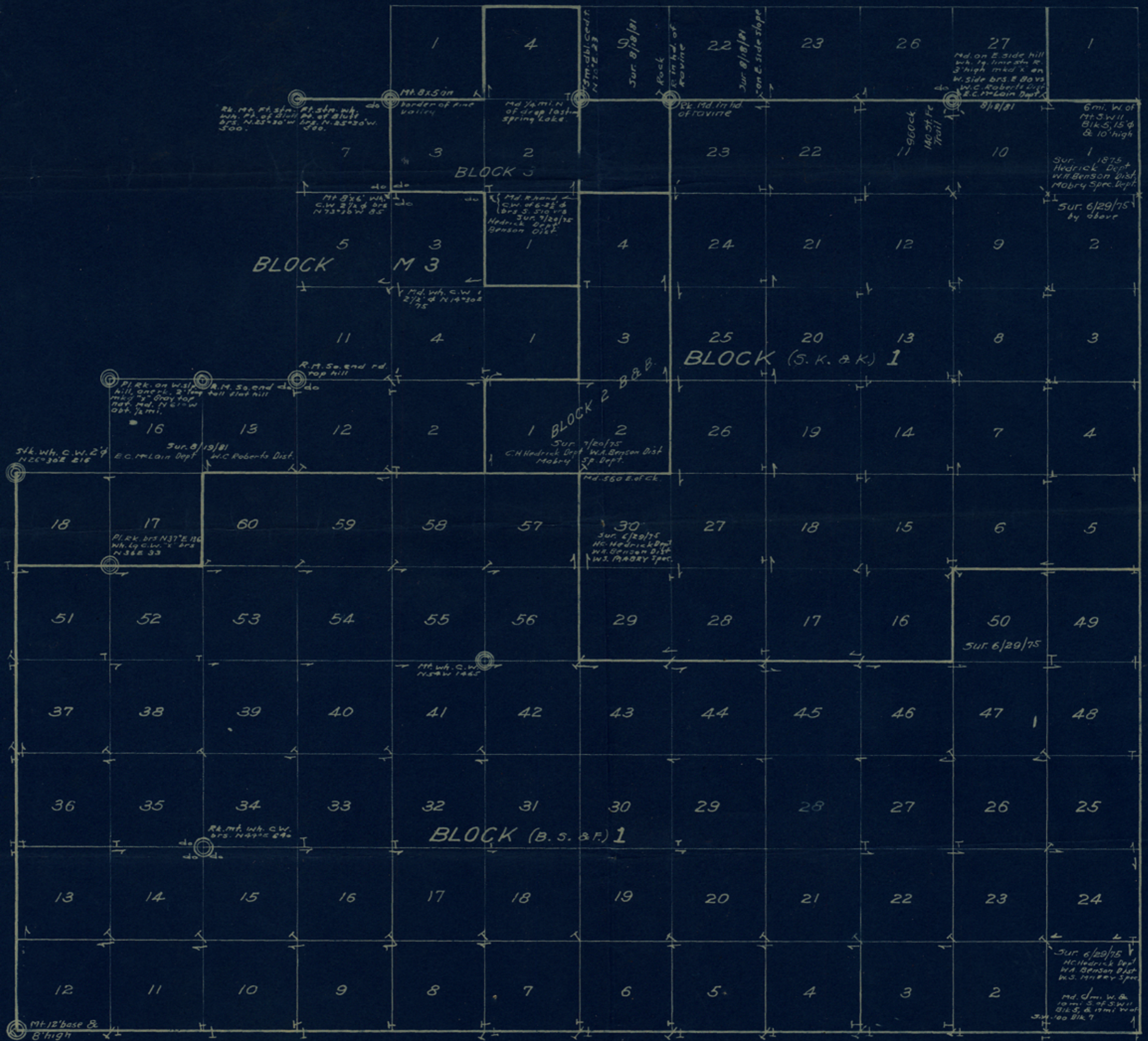


WORKING SKETCH OF BLOCKS "1" S.K.&K. AND B.S.&F.  
POTTER COUNTY TEXAS



16

Potter County

Sketch and Statement.

Filed Oct. 8<sup>th</sup> 1920

J. P. Robinson, Comm-  
S. C. Clark,  
clk.

Blks 1. SK & K. &  
1. BS & F.

114

counter 34402

Nov. 17, 1920.

Hon. Howard Trigg,  
Amarillo, Texas.

Dear Sir:

I note several errors in the letter written to you yesterday and to correct them I am giving you herewith a corrected copy of the letter. I trust that these errors have not caused you any inconvenience.

"This office is in receipt of your letter of the fourth enclosing blue print plat showing connection recently made from the SW corner of block 5, I. & G. N. in Carson County to the NW corner of section 23, block 1, S. K. & K. Potter County and note that you have located the NW corner of section 10 and the NE corner of section 11 said block 1 according to the calls for the Santa Fe Trail and creek on the N line of section 11, which point you believe is the place H. C. Hedrick originally placed that corner according to which you show 29.8 varas excess in each of the three miles lying W of this point.

Inasmuch as the NW corner of 10 and the NE of 11 do not call for any marked point on the ground and as the calls in the field notes of No. 11 for the Santa Fe Trail and creek are only passing calls I do not believe that same are locative and especially so if you have to place the excess in proportional part and change the course of the line to make same fit. For that reason I do not believe the point fixed by you for this corner is properly located. On account of the uncertainty of this corner and the fact that some years ago this office recognized the vacancy along the E line of this block constructed course and distance from the corners on the W as stated to you in our former letter some days ago, it is my opinion that the surveys in block 1, S. K. & K. and B. S. & F. should only take course and distance going E from the NW corner of 23, which you have identified.

In regard to the subdivisions of section 12, block S it is noted that you have given an excess of 14.2 varas to the E and W in block S. This excess is based on your connection from the SW corner of block 5, I. & G. N. above mentioned and the point established by you for the corners of 10 and 11, block 1, S. K. & K.

E

counter 34403

#2. H. T.-----

In the absence of any original corner on the W part of block S, I do not believe that block entitled to any excess E and W and for that reason should only take course and distance E and W.

Yours truly,

Clark-wb

Commissioner

E'

counter 34404

HOWARD TRIGG  
COUNTY SURVEYOR

1057  
RECEIVED

AMARILLO, TEXAS. Oct. 25<sup>th</sup> 1920.

OCT 27 1920

Hon. J.T. Robison,

Austin, Texas.

Referred to Map

Dear Sir:-

I am going into Carson County and do some surveying in Block " S " and have found a man there who can identify the position of the S.W. corner of survey No. 11 Block 5 I & G N R R Co.

A surveyor by the name of Omohondro claims to have identified this corner over thirty years ago also James Gray claims to have identified the same corner later in the resurvey of Block " T " in 1887. This S.W. corner of survey No. 11 Block 5 was placed by H.C.Hedrick on the same day which he surveyed Blocks 1 S K & K and Block 1 B S & F in Potter County. I intend to get a connection from the S.W. corner of survey No. 11 Block 5 I & G N R R Co. to the N.E. corner of survey No. 10 Block 1 S K & K tomorrow and will submit you a sketch showing this connection which will probably give you more light on the construction of block 1 S K & K and Block 1 B S & F Potter Co.

I am anxious to get all this before you as I don't believe you have had it before.

After I have returned I will prepare a sketch of all this and send you for your information in issuing further instructions on Block 1 B S & F Potter Co. and reconstruct the west portion of Block 1 B S & F in accordance with your last letter. In this I will disregard the corners in Block M 3 and show the conflicts with that Block.

Yours very truly,

F<sup>2</sup>

Howard J. Trigg.

counter 31405

HOWARD TRIGG  
COUNTY SURVEYOR

1088

RECEIVED

AMARILLO, TEXAS. Nov. 4" 1920.

Hon. J.T. Robison,  
Austin, Texas.

NOV 6 1920

Referred to Map

Dear Sir:-

I am enclosing a blue print showing the construction of Block 1 B S & F, according to your last letter, west of a line drawn south from the N.W. corner of survey No. 23 Block L S K & K. You will notice the changes which I made by comparing this print with the first one which I sent you. The next change which I have made is in the position of the N.W. corner of survey No. 10 and N.E. 11 Block 1 S K & K, which I believe is the place H.C. Hedrick placed it originally. This corner I have located on a line passing N. 89° 54' E. from the N.W. corner of survey No. 23 to the N.W. corner of survey No. 10 allowing the proportionate part of excess to the Santa Fe Trail and the creek called for on the north line of survey No. 11 Block 1 S K & K. From the N.W. corner of survey No. 10 as mentioned I have shown a line N. 89° 45' E. 1914.2 vrs. to the mile for eight miles to the S.E. corner of survey No. 1 Block S.

This S.E. corner of survey No. 1 Block S was identified by a surveyor by the name of Omchondro and a pipe placed in the center of same; later being identified by Jas. Gray who resurveyed Block " T " in 1887. Mr. J.M. Sanford who has lived N.W. of this corner for twenty-five years or more states that this corner could have been easily identified for a number of years after he began passing same on his way to Panhandle City.

Please advise me as to the construction of the surveys in Block 1 B S & F. lying east of the line drawn south of the N.W. corner of survey No. 23 Block 1 S K & K.

F<sup>3</sup>

counter 34906

HOWARD TRIGG  
COUNTY SURVEYOR

Hon. J.T.R. No. 2.

AMARILLO, TEXAS. Nov. 4" 1920..

In connection with this will state that Mr. J.M.Sanford desires a patent on the W.1/2, the N.E. and S.E. 1/4 of survey No. 12 Block S in Carson County. Shall I construct this survey No. 12 as indicated on the enclosed blue print? I wish to get your opinion before any thing is recorded, thinking this might save time and expense to Mr. Sanford. Thanking you for an early reply, I am,

Respectfully,

*Howard J. Trigg.*

E<sup>4</sup>

counter 37407



General Land Office  
State of Texas  
Austin

J. T. ROBISON, COMMISSIONER  
J. H. WALKER, CHIEF CLERK

Oct. 11, 1920.

Mr. Howard T. Trigg,  
Amarillo, Texas.

Dear Sir:

This office is in receipt of your letter of the fifth instant enclosing two blue print plats; one being a copy of a working sketch prepared by you covering block 1, B. S. & F. and S. K. K., block 2, B. & B., block 3, and part of block M3, in the NE part of Potter County. The other is a copy of plat showing original corners found in said blocks and course and distance between same as determined by a preliminary survey of that territory, from which you desire instructions as to a resurvey of block 1, B. S. & F. Same has been given due consideration and in reply beg to advise as follows:

Block 1, B. S. & F and block 1, S. K. & K. were both surveyed by H. C. Hedrick on same date, (June 29th, 1875) as shown by their field notes on file in this office and therefore should be considered as one system of surveys. While survey No. 1 in each block call for ties or connections to other blocks several miles distant on their east, the field notes of other sections call for marked corners established by the locating surveyor within said blocks as shown by your working sketch; namely the Sw corner of No. 12, the common corner of Nos. 14, 15, 34 and 35, corner 41, 42, 55 and 56 in block 1, B. S. & F and NW corner of No. 23 in block S. K. & K.

According to connections by W. D. Twichell dated 1900, excess is shown east and west between the original corner of surveys Nos. 14, 15, 34 and 35, block 1, B. S. & F. and the west lines of blocks T and M4, on the east and in 1902 this excess was filed on and surveyed as vacant land lying in a strip along the east lines of said block 1. This vacancy was based on the construction of surveys in said blocks course and distance east from the identified corner of surveys Nos. 14, 15, 34 and 35, above mentioned, that being the only original corner in said blocks shown to have been found at that time and breaking the ties in beginning calls for the blocks on the east. In consideration of this construction and approval of said scrap surveys by this office, it would appear that same construction and location of surveys in said blocks should be followed in making a resurvey of same subject to such change or

F<sup>5</sup>

counter 34408





General Land Office  
State of Texas  
Austin

J. T. ROBISON, COMMISSIONER  
J. H. WALKER, CHIEF CLERK

#2. H. T. T.-----

correction as may be necessary to conform to the position of other original corners that you now find in said blocks. Therefore referring to your plat showing your preliminary work, as a basis ~~of~~ the proper method of construction of sections in said block would be to run their lines due north, south, east and west from or through the several original identified corners in said blocks Nos. 1 B. S. & F and S. K. & K. ignoring the corners found by you in block M3, for reason that same is a junior location and should not control surveys in the older blocks. Excess between original corners should be equally distributed in the surveys lying between these original corners.

as

It is noted that you have indicated the NE corner of survey No. 2, block 3, as an original corner of that survey, but the description given by you does not agree with the field notes of No. 2 on file here. Therefore, unless this corner can be identified beyond question ~~or~~ the NE corner of No. 2 same should not be considered in fixing the lines of surveys in block 1, B. S. & F. You also indicate the NW corner of No. 10 and NE corner of No. 11 on north block line of block 1, S. K. & K as an original corner. Referring to the field notes of said surveys no marks are called for at this corner, therefore unless this point can be definitely established as the original corner of Nos. 10 and 11 same should not be considered, and all surveys in each block lying east of a line run due south from the NW corner of No. 23 should be given only course and distance east and west.

Briefly the excess of 21.2 varas to the section E & W between the SW corner of No. 12 and NE corner of No. 14, should be given to all sections in said two tiers northward to and including Nos. 51 and 52. The excess of 14 varas to the section E and W between the NE corner of No. 14 and NE corner of No. 41 should be given to all section in said three tiers from block line on south to block line on north. Excess between NE corner of No. 41, Blk 1, B. S. & F. and NW corner of No. 23, Blk. 1, S. K. & K. should be likewise distributed to surveys ~~affected in~~

affected in said two blocks. The excess north and south between these corners should be likewise extended E and W through said blocks. Corners in adjoining junior blocks should not be considered as controlling the location of surveys in these two blocks.

Fb

counter 34409

General Farm Office  
State of Texas  
Austin

J. H. WATKINS, CHIEF, CLAIMS  
T. J. JOHNSON, COMMISSIONER

17.

Potter Co

Letters from & to Howard  
T. Trigg,  
Oct. 25, 1920, etc.

E7

counter 34410

Potter Co. St. File #17