

Block 349

Scale 2000 varas: 1 inch

I, Paul Hess, State Surveyor do hereby certify that this is a true and correct sketch of a part of Presidio County showing Block No 349 Tex. Mex. R. R. Co. Austin Dec. 1st 1890 Tex

Paul Hess
State Surveyor

counter 34466

Faint handwritten notes on the left side of the page, including 'Rio Grande' and 'Co. 34466'.

2506 211 280
John W. [Signature]

Dec 1 1880
No 3rd Tex. Inf. U.S.A.
[Illegible text]

2506 211 280

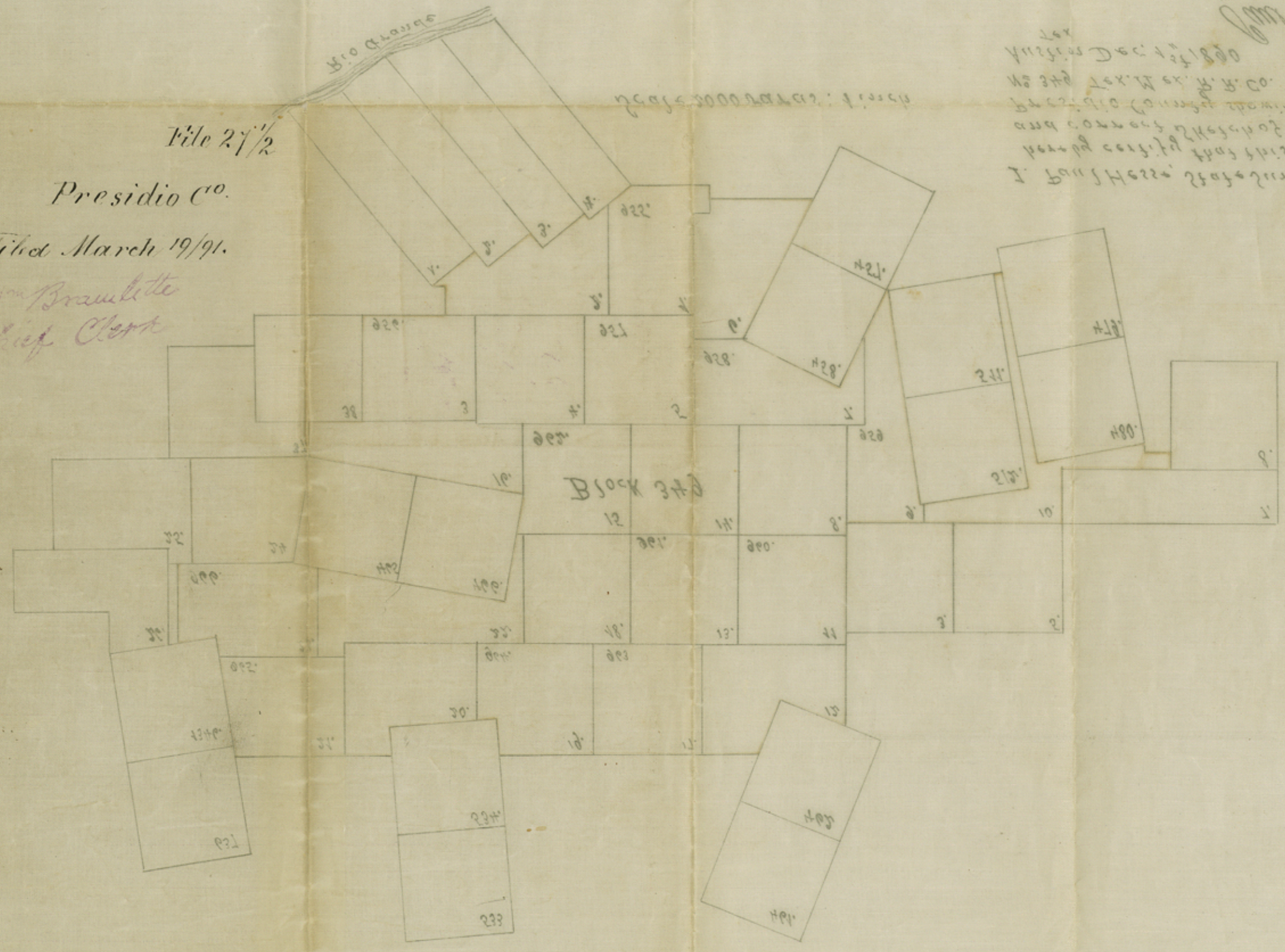
Sto. George

File 2 1/2

Presidio Co.

Filed March 19/91.

Wm Braullette
Chief Clerk



counter 34467