

Marfa Texas 8th July 1911

RECEIVED

JUL 10 1911

Referred to Map

Hon. J. D. Robinson Com. G. S. O.
Austin Texas

Dear Sir

your favor of April 8th was misplaced during my absence. hence this delay in answering same with reference to the corrected field notes of Sur. No. 14 Blk. No. 250 T. 2 S. E. Ry. Co. said survey was made on the ground as shown by the red lines in enclosed sketch and as described in the field notes returned to your office. The position of the J. D. English Survey as shown in ~~the~~ sketch returned with field notes of No. 14 was obtained from a survey made of it by Mr. Brooks wherein he tied it on to the A. Pena Survey. The Pena sur. ties by its own field notes to Preemption Sur. No. 7 and the position of Preemption Survey No. 7

from Sur. No. 14 Bk. No. 250 was
obtained by a triangulation observation
on ~~the~~ the North line of said Sur
No. 14 from the east corner of said
Presumption Sur. No. 7 as shown to me
by a Mexican who lived on said No. 7
the River was meandered as shown by the
red line ~~its~~ from A. to B. its general
course observed for a mile or about above A
and for same distance below B
I have no other connections that is Camp
I am going next W to run some lines in
N & P B. No. 1

Connecting Northward to Block No. 23
G. A. & S. A. Ry. Co. and when I am
through with same if you wish a report
of same I will take pleasure in furnishing
you with complete sketch and report of
same

yours respectfully

J. H. Seay

Marble Texas

No. 30.
 - Presidio County -
 Filed July 18, 1871.
 T. J. Poprose, Comr.
 G.C. Grant Creek



Sketch From Presidio County
by

J. H. Seay
 Marfa Texas

See Sketch and Con. line in S. 40793.

2
 NW

counter 34470

P 7579
 P 370
 389
 366
 363

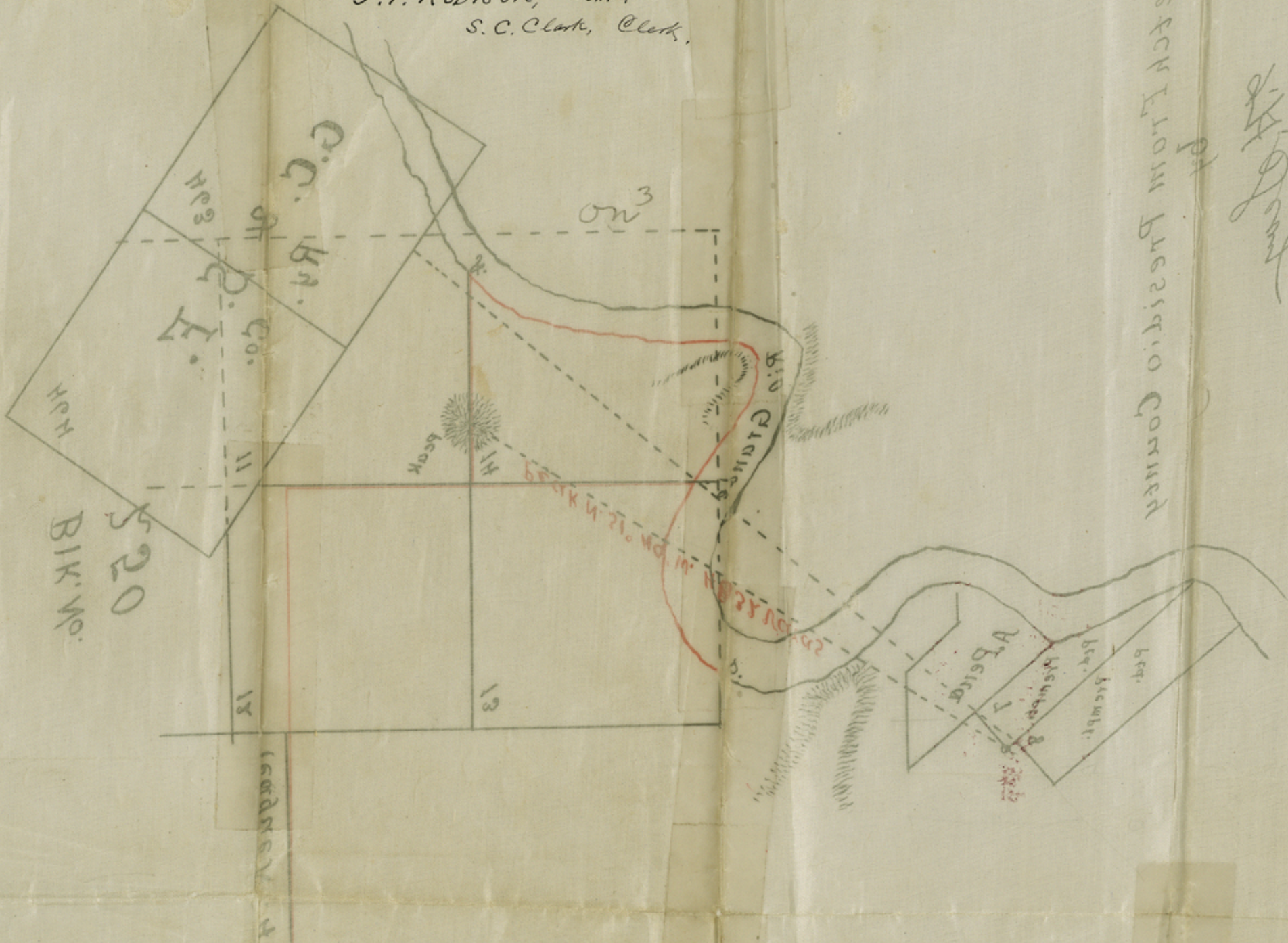
1354

1871 July 18

N^o 30.

- Presidio County -
Filed Aug. 12th 1911. -

J. T. Robison, Comr. -
S. C. Clark, Clerk.



B.M. No.
20

counter 34471

Sketch From Presidio County

J. T. Robison
S. C. Clark

See sketch of Com. Line in C. 40768.

counter 34471