

RECEIVED
APR 1 1913
Referred to Map

463

Alpine, Texas. March 29th 1913

Hon. J. T. Robison, State Land Commissioner.
Austin, Texas.

Dear Sir:

I have yours of the 27th, inclosing notes of connection sent to your office, made by Deputy Surveyor H. B. Tarver, of Presidio County, of his run, made for me, in Presidio County, Block #330, and note what you say in regard to same.

I saw Mr. Tarver on the 23rd, and asked him why he did not send the notes to me. Also, correction to #18, Blk. #330, and he stated that it was his duty to do as he had done. I told him that I had employed him to do the work, and told him to send the notes to me, after Mr. Brooks had signed them, for the reason that I had kept a correct copy of all the run made on the ground, as I was with him all the time. He sent the notes to you and I find that he made several mistakes. I have been two and a half years trying to get this connection, and now after making it, he has failed to turn it in as made and described on the ground. He promised, last Monday, to make out corrected notes to #18, Blk. #330, and have them in my hands today, but this he has failed to do.

I will send you an exact copy of the run, as it was made on the ground, by Mr. Tarver, which you will see, is quite different from the way he has described it.

In the 3rd call from S.W. cor. #5, Blk. #23, he gives S.47 E.280 vrs. to md. while from end of S.25 E. 360 vrs., I took bearing on Mr. Dawsons house S.47 E.. Then ran N.62 1/4 E.280 vrs. to bank on west side of Las Moras creek, placed stone md. and sighted S.12 3/4 E. to Dawson house, on #22, Hardiman survey. Then N.22 3/4 E.553 vrs. to fence cor. on top of east bluff on creek, same being described in Ex. XYZ, on file in your office.

I see that Tarver shows 21 and 22 Hardiman, on map, covering #2, Blk. "C", S. of Blk. #23, but he does not give his connection as made from S.W. cor. of #5, Blk. #23, to S.W. cor. #21 Hardiman, so I will furnish his notes, which you can see for your self.

Note his beginning at N.E. cor. #767 instead of the original beginning corner, which we went to, on west side of Sienege creek.

I am sorry to be forced to place all this written matter before you, but it seems that I am not to get justice in Presidio County.

Yours Truly,

O. H. Heator

P.S. I am returning your blue print fro your guidance, which please return to me.

O.H.H.

N.B. If Mr Tarver sends in corrected notes to 18 Bl 330. please do not file them, but send to me. I wish to see them before filing. If they incorrect like his notes I want him to send correct as they should be. I instructed him to send them to me.

H. counter 34520

Alpine, Texas, March 29th 1913

H. B. Tarver, Deputy Surveyor of Presidio County.
Marfa. Texas.

Dear Sir:

On my arrival here, yesterday, I expected to find the corrected field notes to Survey #18, Block #330. I went to the Post Office again this morning, and there was nonthing from you, as you promised.

I am notifying the General Land Office that if you send these notes to that office, instead of to me, not to file them, but send them back to me.

On yesterday, I recieved a copy of the notes you sent, with sketch, to the General Land Office, and had filed, so I am making out a full report of the run, as you made it on the ground, which will show that you made a serious mistake in your report, and, if you had sent it to me, I would have looked it over and reported to you, so that you would not have sent it in as you did.

For instance: Beginning at S.W. cor. #5, Blk. 23, N. 25 E., 340 vrs. N. 62 1/4 E. 460 vrs. S. 25 E. 340 vrs. pt. S.W. cor. Dawsons house brs. S. 47 E.. Then N. 62 1/4 E. 280 vrs. stone md. on W. bank of Las Moras creek, from which S.W. cor. Dawsons house brs. S. 12 3/4 E. about 600 vrs.. And N. 22 3/4 E. 553 vrs. to fence corner on top of east bluff of creek. Then N. 85 E. &c..

You gave in your report, 4th course S. 47 E. 280 vrs. instead of N. 62 1/4 E. 280 vrs..

Again you say begining at the N.E. cor. Sur. 767, a rock md. on west side of Sienega creek whence a round knob on peak, brs. S. 30 E. about 325 vrs.. Thence East (150 vrs. crossing creek, you leave out) 375 vrs. to a rock md. on N. side of rough, rocky hill. Thence N. 660, enter creek &c.. (At 661 vrs. a rock md. was built on top of rock 15 vrs. east of creek.)

Now you know that you did not begin at the N.E. cor. of 767, but that you began at the original beginning corner of 767, and ran E. 375 vrs. to where the corrected field notes call for beginning.

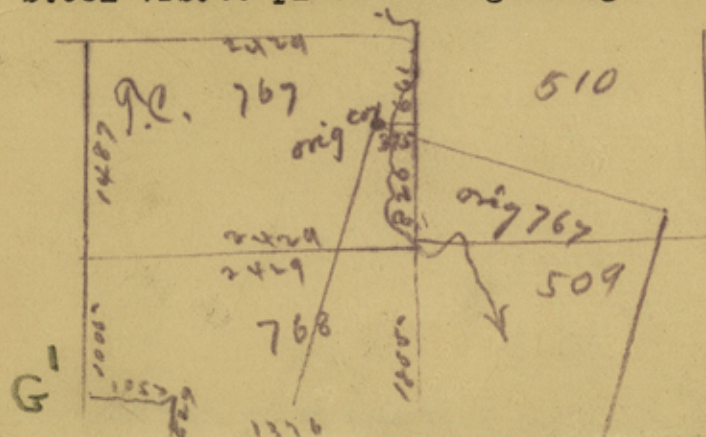
I will send you these notes and a sketch, so you can see your error.

Yours Truly,

O. H. Hector

Copy of corrected field notes; sur. #767, R.C. Daly, T.C. Ry. Cert.:

Beg. at rock md. the beg. pt. of original survey #767, from which a high, round topped pk. brs. S. 30 E. 225 vrs.. Then east at 150 vrs. cross Sienega creek, 375 vrs. to a rock md. in the west line of #510. Then S. at about 700 vrs. cross creek, 826 vrs. to stk. & md. in W. line of #509. Then W. 2429 vrs. to stk. & md. in E. line of #6, Blk. #362. Then N. 1487 vrs. to stk. & md.. Then E. 2100 vrs. cross creek 2429 vrs. to a rock md. in W. line of #510. Then S. 661 vrs. to place of beginning. - #768 to south.



counter 34521

Field notes of run made by Deputy Surveyor H. B. Tarver:

Feb. 23rd 1913- A. M.-- Went to S.E. cor. of Sur. #4 & S.W. Cor. #5, Blk. #23, as described in his notes. Then W. ~~1130~~ va. 1130 E. 130 vrs. to pt. on top of high bluff of mountain, from which a rock md. at S.W. cor. #5 #21 Hardiman bears S. 1' E.. Another Rk. md. brs. S. 47 E. 21 vrs.. Top of round hill in valley brs. S. 55 W.. Another round top hill brs. N. 64 W., and a white house in Ojinago, across the Rio Grande river, in Mexico, 200 yards east of Catholic Church, called for from Astronomical pt. brs. S. 18 3/4 E.. Then back to S.E. cor. of #4, Blk. #23. Then N. 25 E. 360 vrs. pt.. Then N. 62 1/4 E. 460 vrs. pt. in canon. Then S. 25 E. 340 vrs. down canon pt.. S.W. cor. Dawson house brs. S. 47 E..

Then N. 62 1/4 E. 280 vrs. made stone md. on top of west bank of Las Moras ~~ex~~ creek, from which S.W. cor. Dawson house brs. S. 12 3/4 E. about 600 vrs. same being on #22 Hardiman, at head spring. Then N. 22 3/4 E. 553 vrs. to fence corner on top of east high bluff. (On this run, broke off back end of chain). P. M.-- Returned to this corner and ran N. 85 E. along fence, 1840 vrs. crossed draw 1900 vrs. to fence corner. Then N. 78 E. 1098 vrs. to fence corner, and monument on San Jacinta peak brs. S. 80 E.. Then S. 74 3/4 E. 684 vrs. to fence corner. (715 vrs. by Hector--O.K.) Then N. 59 E. 551 3/4 vrs. to fence corner. (469 vrs. by Hector--O.K.) Then N. 24 3/4 E. 690 vrs. to pt. in fence, and E. 10 vrs. to N.W. cor. of #330. (See Ex. XYZ) From this corner, Tarver claimed he had ran S. 1900 vrs. to S.W. cor. of #330 and E. 950 vrs. to N. cor. of 468.

24th-- A.M.-- Tarver and chainmen went to N. corner of #468, on top of high hill. Ran S. to-wat: 1760 vrs. pass about 10 vrs. west from a rock md. he set for S. cor. of 468, in Jan. 1913. 1900 vrs. built rock md. on N. side of draw. Quit. (Old rock md. s. 60 steps, and west 23 steps, being the S. cor. of 468. *by Hector*) Now went to original beginning corner of #767, T.C. Ry. a large rock md. on W. side of Sienega creek, from which a high hill brs. S. 30 E., called 225 vrs. - about 325 vrs. Then E. 150 vrs. to Sienega creek. 375 vrs. rock md. on rough, rock bluff, on old fence. Then N. at Va. 12' E. 661 vrs. built rock md. on top of rock 15 vrs. east of creek. A large cave on opposite side of creek, about 200 feet high. Again N. 210 vrs. leave creek. 458 vrs. built rock md. on S. slope of ridge running east and west, from which peak bears S. 3 W. about one mile. Again N. at 660 vrs. cross Sienega creek. 912 vrs. a rock md. on S. slope of low ridge, from which jacal called for in Hector's meanders, brs. S. 10 1/2 W. 140 vrs., and 185 vrs. west of S.E. cor. of #17, which falls in deep canon. Again N. 1741 vrs. pt. set S.E. cor. #13, 56 vrs. to east, a rock md.. and N. E. cor. #17, 185 vrs. to east, a rock md. 10 vrs. west of bluff, and mouth of small cañon N. 80 E. 50 vrs. Door in house N. 11 1/4 E.. Again N. from the end of 1741 vrs. 606 vrs. set md. 56 vrs. to east, on trail near foot of hill, and west 119 vrs. md. on S.W. slope of same hill, 20 vrs. from draw. Then again N. from end of 606 vrs. 710 vrs. N. edge of draw, set rk. md. west 119 vrs. on east line of #13, and east from end of 710, 89 vrs. and N. 78 1/4 E. at 300 vrs. across Sienega, 710 vrs. to rk. md. set by Tarver, for S.W. cor. #468. N. B. Tarver did not run N. 45 W. 1344 vrs. and N. 45 E. 1344 vrs. to N. cor. 468, as he says in his notes, but did, as shown herein. And I further state, on account of the chainmen breaking the steel tape, about one half inch, ahead of pt. where he measured from, at back end, he had to then catch hold and held his thumb on pin, in front of his hand, thereby losing four or five inches on each chain. So he gained 89 vrs. in northings than I did. Also, you will see in course N. 85 E. where the chain was broken, he gives 1900 vrs. while I made it 1895 vrs., and all his measurements from there on, are longer than what I gave them. In course N. 59 E., he added 100 vrs. too much, making 551 3/4 vrs. while it was two outs, two chains, and 11 3/4 vrs..

March 29th 1913.

O. H. Hector

counter 34522

G2



J.H.B. Surveyor, State County Surveyor
 In view of the County Surveyor's report that
 the courses and distances shown on the
 sketch above are true and correct as
 indicated by the red lines which said
 connections I measured on the ground
 regarding the relative position of sections
 330, 4, 5, 11, 5 Block 23 G.H. & S.A. R.R. Co. of
 and 30, 31, 30, 29, 32, 33, 34 T.C.R.R. Co. to be as shown
 this 11th 3rd 1913
 H.B. Surveyor
 Deputy County Surveyor

Examined and approved
 this 7th 1913
 Lem W. Eskew
 County Surveyor
 President County Board

W.T.
 LINCH

County 34523

Box 2

Sketch File No. 43

Presidio County

Recd 4-1-13

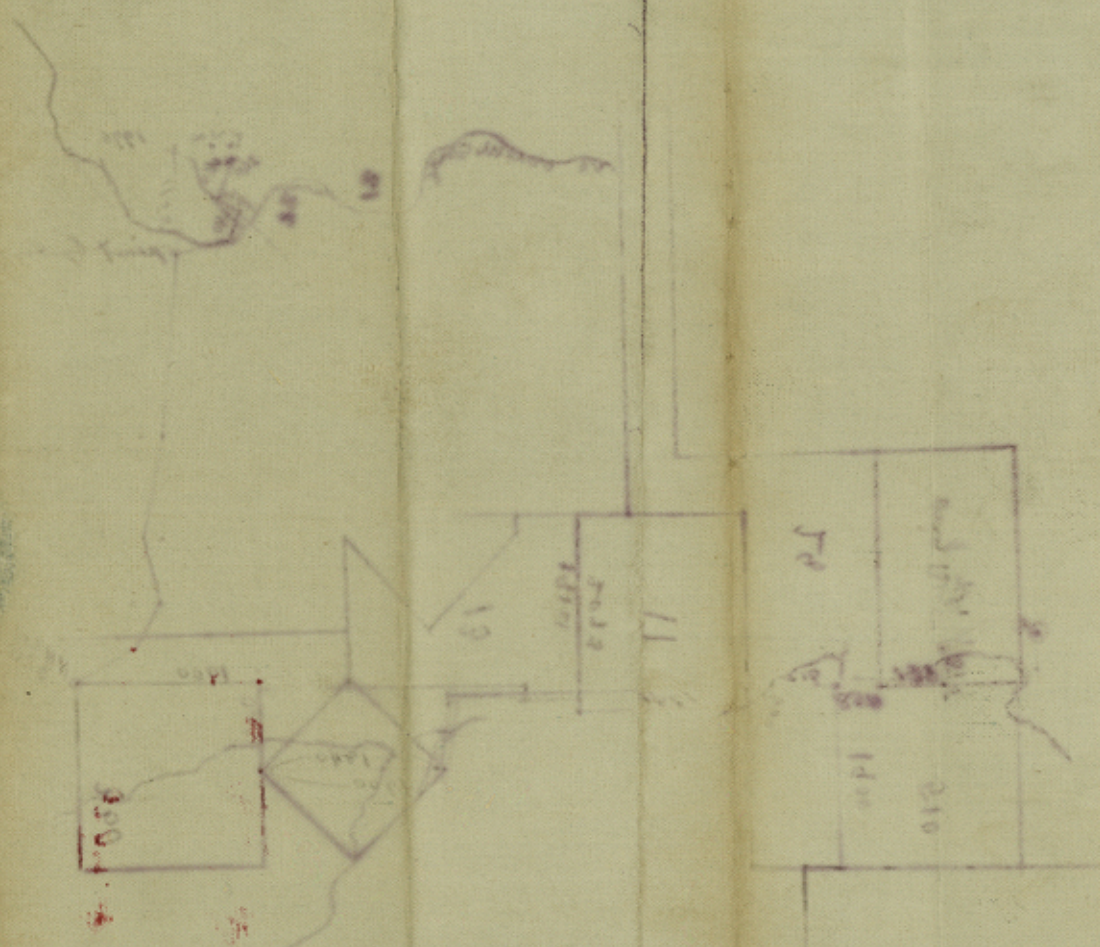
Filed April 1st, 1913 1913

J. H. Walker, Comr.

File Clerk

Descriptive:

counter 34524



G^H