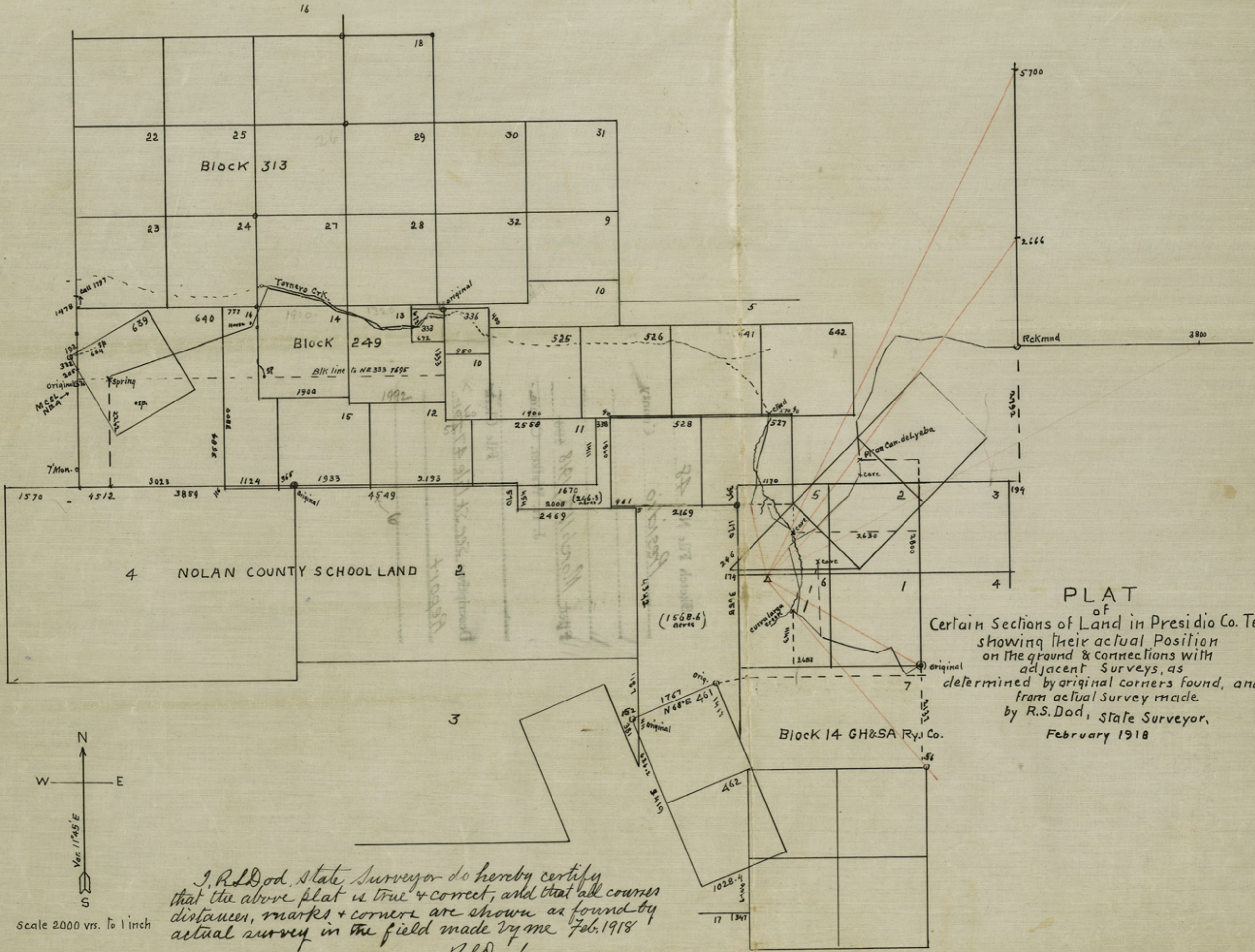


TADP  
 of  
 Certain Sections of the  
 National Park  
 on the ground & corner  
 as shown in the  
 attached map  
 and  
 on the ground & corner  
 as shown in the  
 attached map  
 and  
 on the ground & corner  
 as shown in the  
 attached map

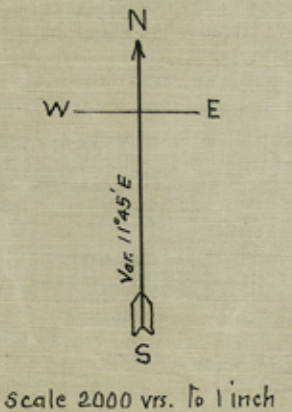


Sketch File No. 48  
 Presidio County  
 March 11th, 1918  
 J. H. Walker, Comm.  
 File Clerk  
 Descriptive see Sk File 47 for  
 Report

Original 1918  
 2008  
 The above is a copy of the original map of the National Park on the ground & corner as shown in the attached map and on the ground & corner as shown in the attached map and on the ground & corner as shown in the attached map.



PLAT  
 of  
 Certain Sections of Land in Presidio Co. Tex.  
 showing their actual position  
 on the ground & connections with  
 adjacent surveys, as  
 determined by original corners found, and  
 from actual survey made  
 by R.S. Dod, State Surveyor,  
 February 1918



I, R.S. Dod, State Surveyor do hereby certify  
 that the above plat is true & correct, and that all courses  
 distances, marks & corners are shown as found by  
 actual survey in the field made by me Feb. 1918

R.S. Dod  
 State Surveyor