

S.D. Waldrip 9/8/1896

J.W. Bateman 12/4/1918

L.M. Ritchie to Nealy Berry

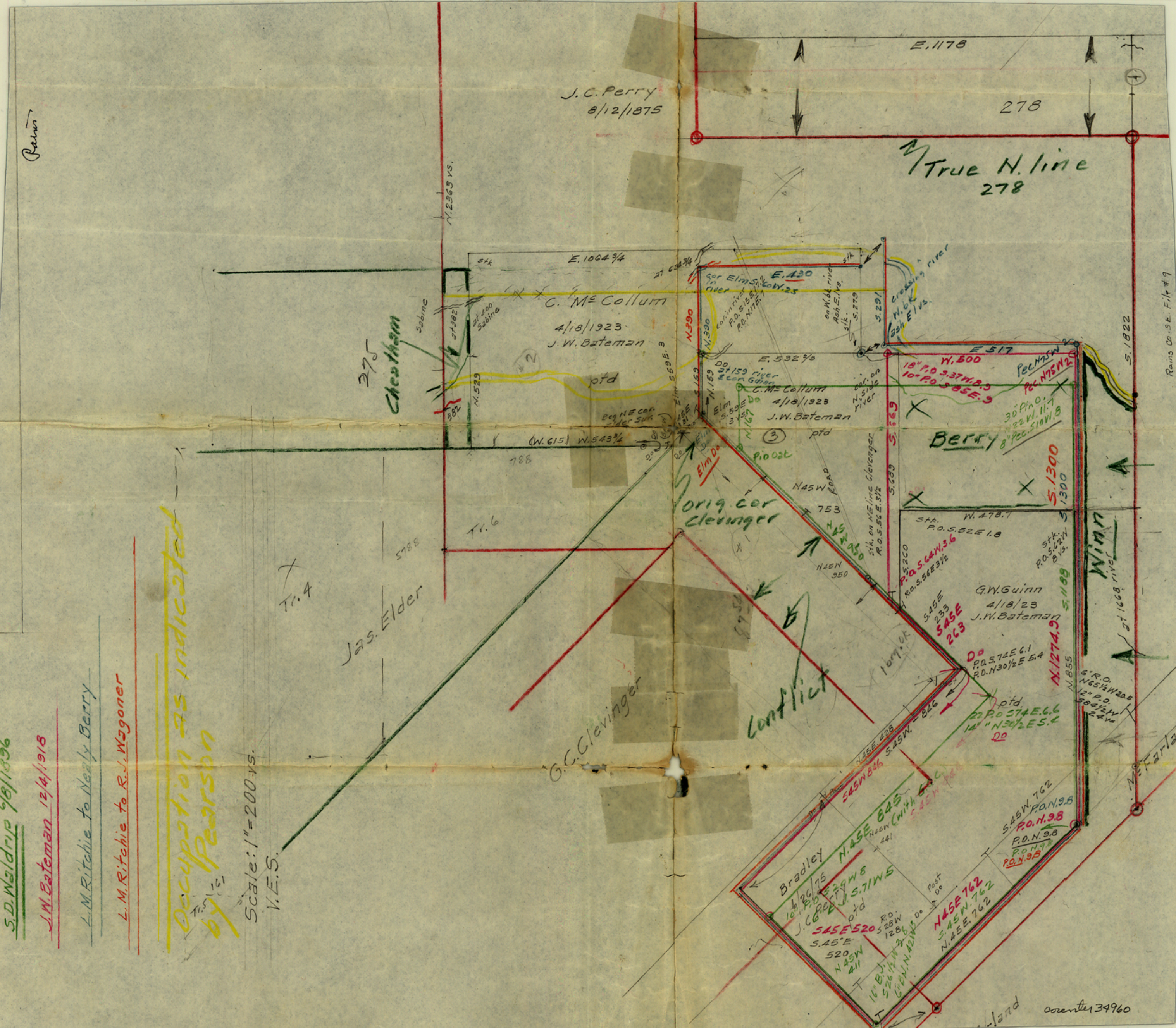
L.M. Ritchie to R.J. Wagoner

Occupation as indicated by Pearson

Scale: 1" = 200 yds.

V.E.S.

Rain



Rains Co. S.E. File #9

land corner 34960