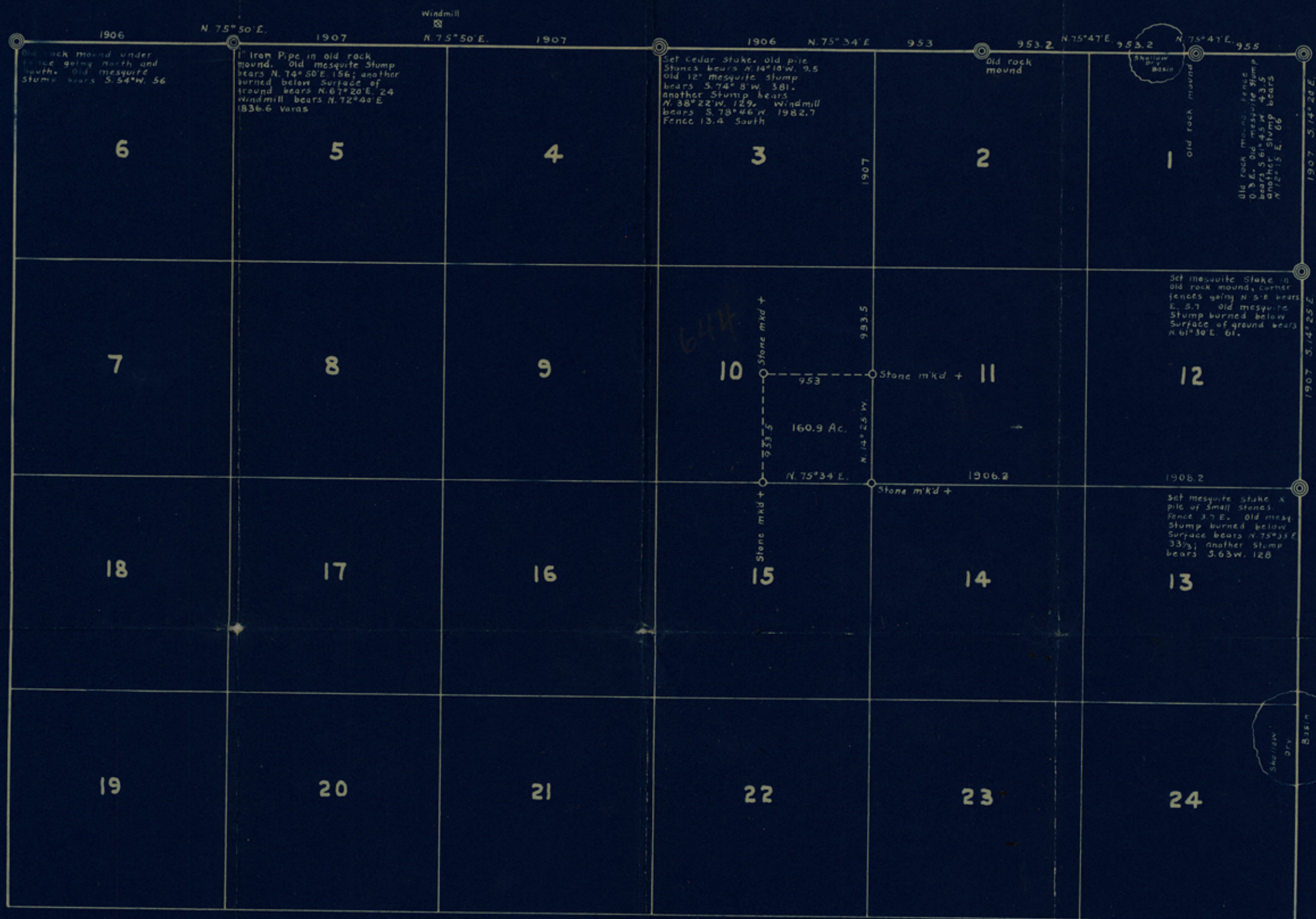


**SKETCH SHOWING  
LOCATION OF  
S.E. 1/4, SECTION 10, BLOCK B, L. & S. V. R. R. Co.  
REAGAN COUNTY, TEXAS**



I, R.G. Armstrong, County Surveyor of Reagan County, do hereby certify that this sketch is true and correct. June 25th, 1928

V-11°53'E

R. G. Armstrong  
County Surveyor

HF

counter 39989



File No. 10

Reagan County  
Armstrong's Spiten  
~~Field Notes~~

Filed June 28 1928

J. T. Robison Com'r.

H. F. McDonald

File Clerk

H.F.