

Map showing lines run and corners found on the ground in Blk. B, L & S V. R. R. Co.
 Reagan County, Texas.

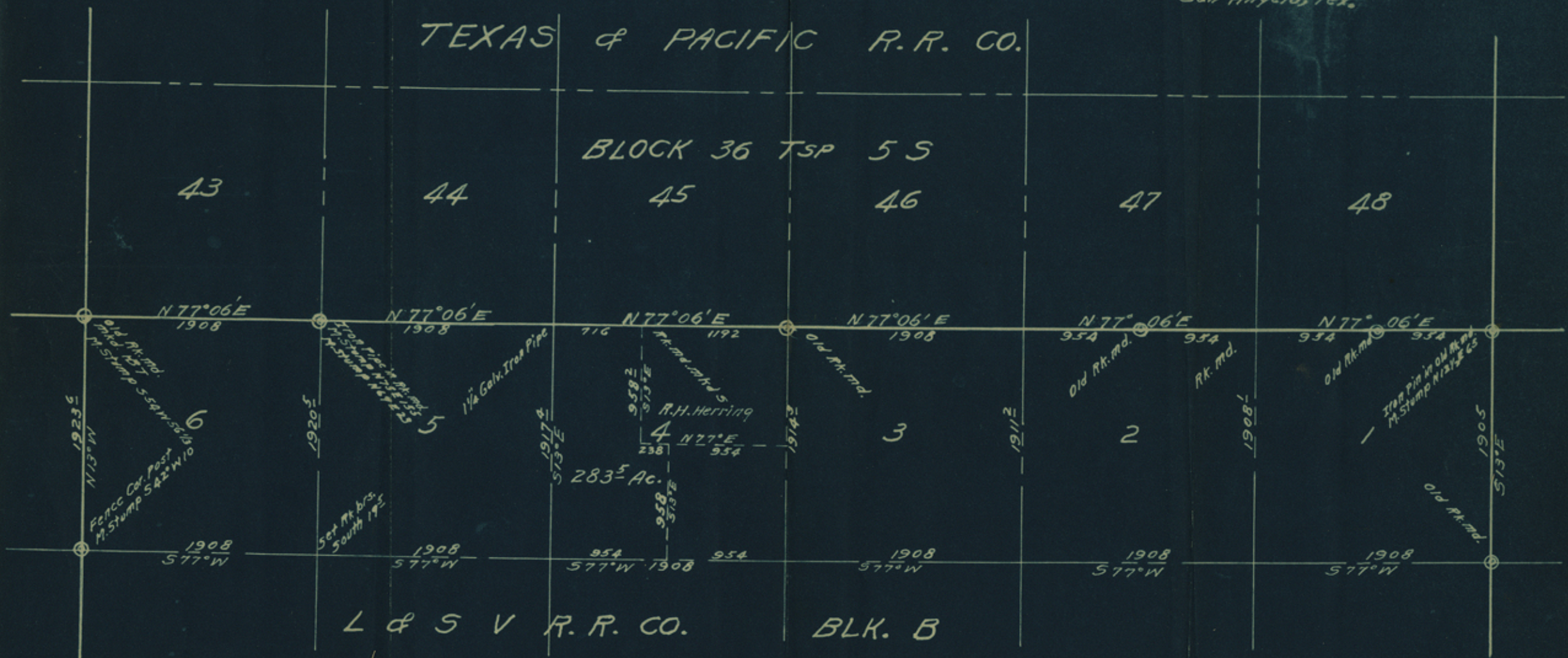
Scale: 1000 vrs. = 1 inch

This the 2nd day of Oct. 1931
 J. A. Simpson
 Licensed State Land Surveyor
 San Angelo, Tex.

TEXAS & PACIFIC R. R. CO.

BLOCK 36 TSP 5 S

43 44 45 46 47 48



L & S V R. R. CO. BLK. B

counter 35000

Sketch File No. 15

12/22/01

Reagan County

J. A. Simpson's Sketch-

North tier Sections Block B.

Filed October 28th 1931

J. H. Walker, Comm.

C. F. Bluster

File Clerk

Descriptive:

counter 35001