

~ REAGAN COUNTY, TEXAS ~

I, J.A. Simpson have made a survey of the following surveys:
 SUR. 48, BIK.C., L.&S.V.R.R.CO., SURVEYS 4 and 2 BIK.D., L.&S.V.R.R.CO.
 Surveyed on the ground. December 23-24, 1932.

J.A. Simpson
 Licensed State Land Surveyor
 San Angelo, Texas.

Scale: 1000 VRS. = 1 Inch



counter 35007

Sketch File No. 17

Reagan County

J.A. Simpson's Sk.

Blks. C & D - L&SV. R.R. Co.

Filed January 9th 1903

J. H. Walker, Comm.

C.F. Blucher

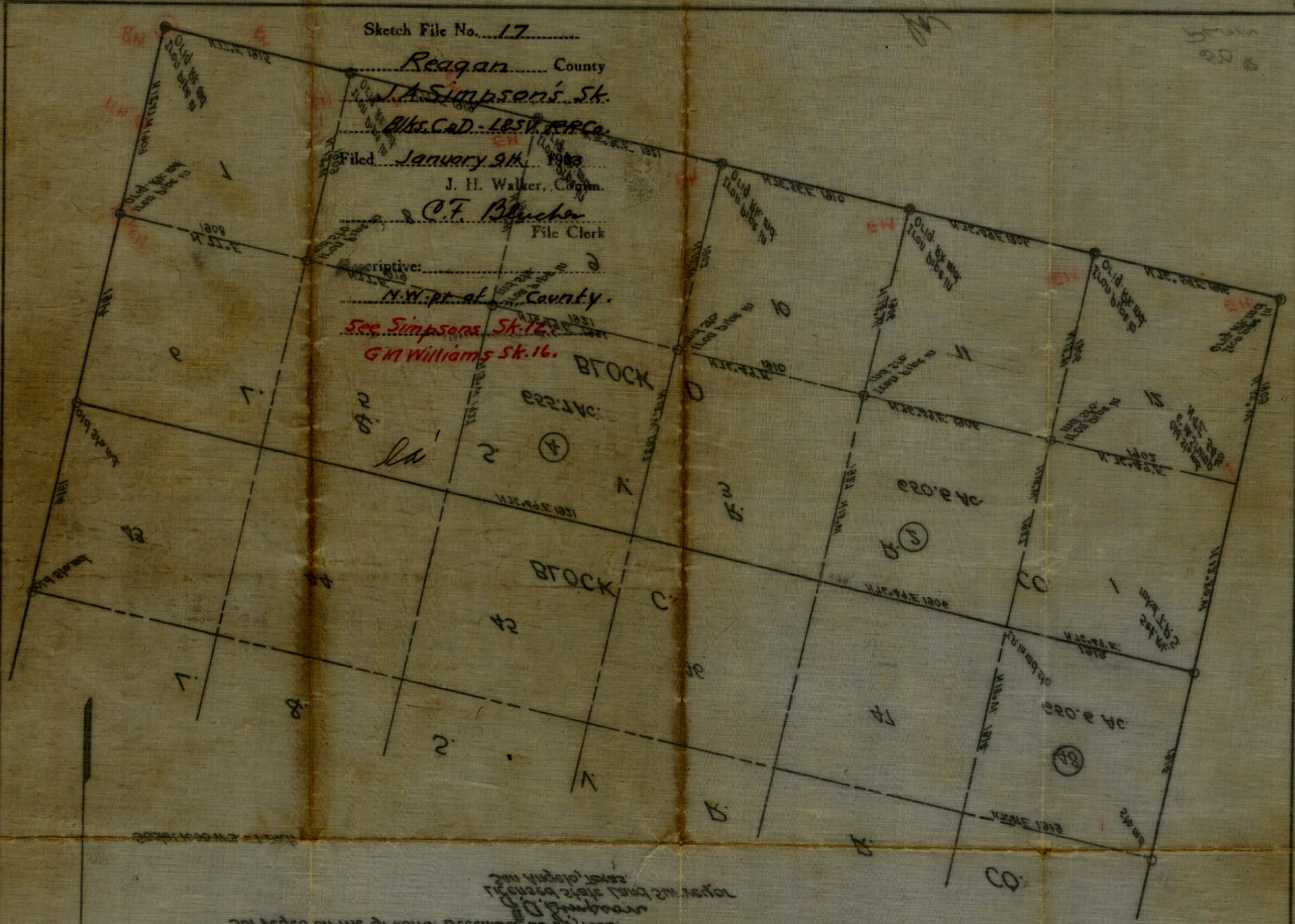
File Clerk

Descriptive:

N.W. pt. of Reagan County.

See Simpson's Sk. 12.

G.M. Williams Sk. 16.



Reading D.D.
 for use of the State Engineer
 and for the purpose of
 recording the same
 December 25-26
 1903
 J. H. Walker, Comm.
 C. F. Blucher, File Clerk

REAGAN COUNTY, TEXAS

counter 35007