

153

S 89° 58' E 1913.2

Set rock marked
"SW 153 - NE 173"

1 1/2" G. I. P. marked
"153-154-171-172 JJG"

TEXAS & PACIFIC RAILROAD COMPANY
BLOCK NO. 1

RECEIVED

JUN 20 1962

General Land Office

N 0° 00' 30" W
1917.6

S 0° 05' 30" E
1908.6

173

172

171

Part of the JOHN R. SCOTT ranch

648.8 Ac

1 1/4" G. I. P. marked
"SE 173 - NW 179"
In mound of stones

1 1/2" G. I. P. marked
"171-172-179-180 JJG"
In large stone mound

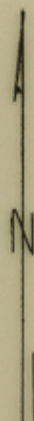
S 89° 45' 45" W 1916.0

179

The above plat shows a survey
of Section No. 172, Block No. 1,
T. & P. R. R. Company, Reagan
County, Texas.

Surveyed by me on the ground on
the 5th day of June, 1962.

File No. 37
REAGAN County
ROLLED SKETCH
Filed June 20 1962
JERRY SADLER, Co. Clerk



M. D. Rawls
Licensed State Land Surveyor

Scale: 1 in -
300 yds

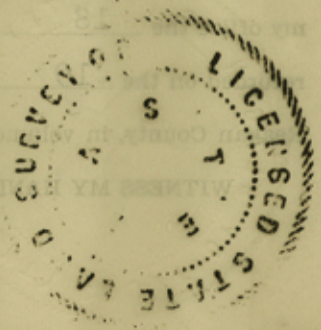
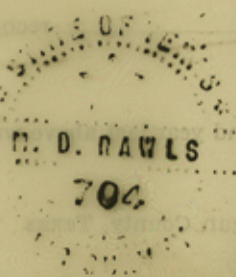
© Patent Corners

FILED FOR RECORD THIS THE 18

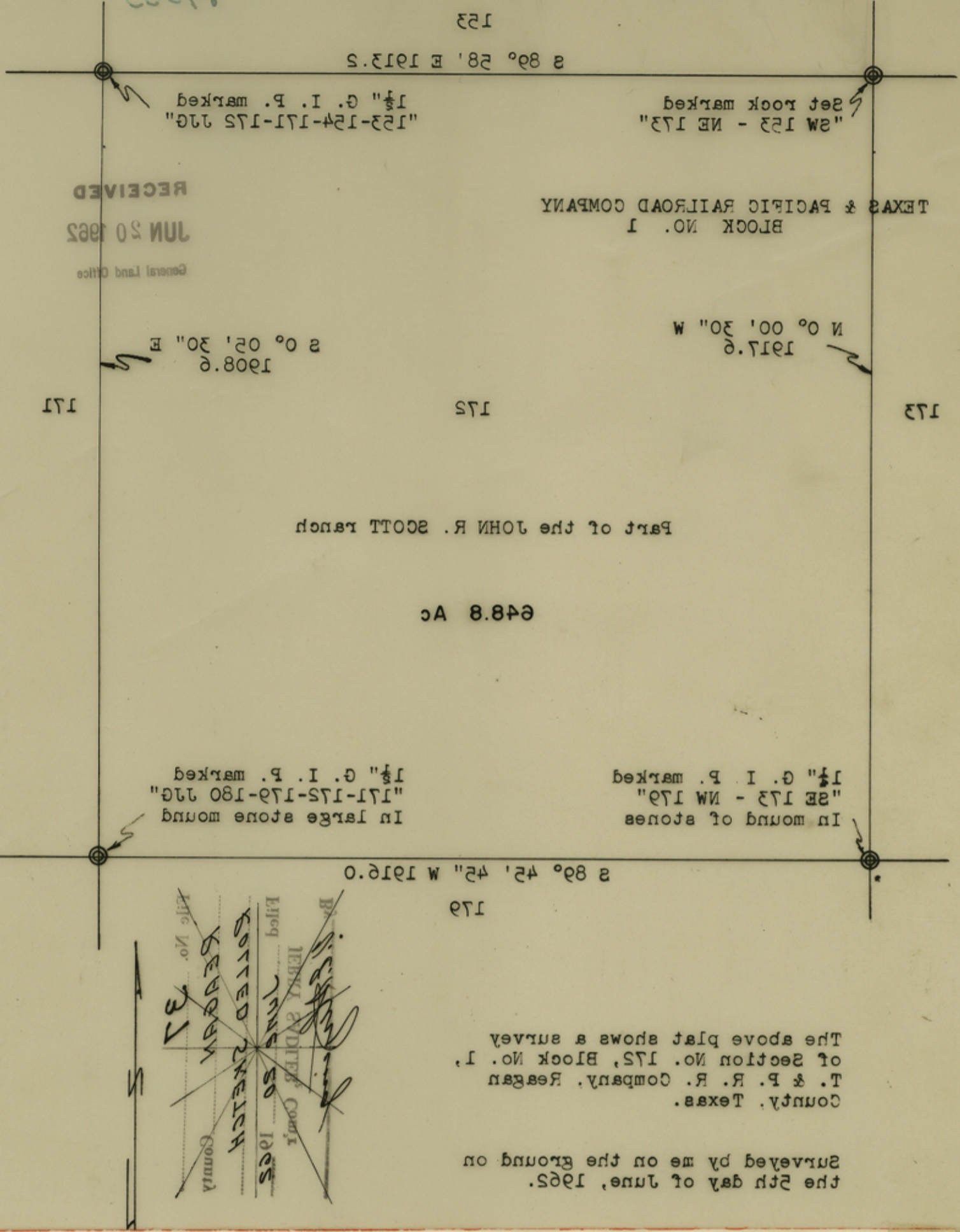
DAY OF June A. D. 1962

3:51 O'CLOCK P. M.

Richard J. Springer
COUNTY CLERK, REAGAN COUNTY, TEXAS



19033
7-213



RECEIVED
JUN 20 1962
General Land Office

TEXAS & PACIFIC RAILROAD COMPANY
BLOCK NO. 1

Part of the JOHN R. SCOTT ranch

648.8 Ac

In large stone mound
"171-172-173-180 179"
1 1/2" G. I. P. marked

In mound of stones
"SE 173 - NW 179"
1 1/2" G. I. P. marked

The above plat shows a survey
of Section No. 172, Block No. 1,
T. & P. R. Company, Reagan
County, Texas.

Surveyed by me on the ground on
the 5th day of June, 1962.

By *Richard T. Springstun*
 Clerk
 REAGAN COUNTY
 FILED
 JUN 20 1962
 REAGAN COUNTY
 CLERK

No. 19033

THE STATE OF TEXAS
COUNTY OF REAGAN

I, Richard T. Springstun, Clerk of the County Court in and for said County,

do hereby certify that the foregoing Plat dated the 5 day of
June, A. D. 19 62, together with its certificates of authentication, was filed for record in
my office the 18 day of June, A. D. 19 62, at 3:51 o'clock P. M., and duly
recorded on the 19 day of June, A. D. 19 62, in Plat records of
Reagan County, in volume 1 on page 22.

WITNESS MY HAND AND OFFICIAL SEAL, at my office in Big Lake, Texas, the day and year last above written.

Richard T. Springstun,
Clerk County Court, Reagan County, Texas

By *Hazel A. Cur* Deputy

(L. S.)

counter 35033

~~REAGAN COUNTY ROLLED SKETCH NO. 37
Resurvey Sec. 172, Blk. 1, T. & P. Ry. Co.
SURVEYED June 5, 1962 BY M.D. Rawls
FILED 6/20/1962~~

File No. SKETCH FILE 35
REAGAN County
Sur. of Sect. 172, Blk. 1, T. & P. Ry. Co.
Filed June 5 19 62
GARRY MAURO, Com'r
By Douglas Howard (12-5-1990)

counter 35034