

922  
D=Harris, Texas; 4/16/32.

APR 18 1932

REFERRED TO MAP

Hon J. H. Walker,  
Commissioner General Land Office,  
Austin, Texas.

Dear Sir: In locating lines of surveys Nos. 852-N1/2- G.C. & S.F. Ry. Co., 850.3 T.C. Ry. Co., and 850.2, Milo Talbot, from their western connections viz: N.E. corner 615 and S. E. Cor. 853, I proceeded as follows:

Beg. at N.W. Cor. 615 as established on former survey, (9/4/31) measured 2314 vrs. N. 74 E. along north line 615 and set stake for S. E. corner 853 and a western cor. of 852-N1/2-, another 415 vrs. N. 74 E. to N. E. cor. No. 615 as established on previous survey.

Beg. at orig. S.E. corner survey No. 1037, T.C. Ry. Co., in west line survey No. 943, H. Herrera, a L. O. 14" mkd. X N. 25 E. 27 vrs. standing and plainly marked. Thence south and along west line 943, 302.5 vrs. and set stake for N. E. cor. 850.2 M. Talbot, and S. E. cor. No. 943.1, M. Talbot.

Beg. at a rk. md. the orig. S.E. cor. sur. No. 849 and S. W. cor. 848, a double cedar 8" N. 27 E. 35.8 vrs. -standing and plainly marked; a double Sp. O. 8" & 4" N. 10-15' W. 35.2 vrs. - dead and broken off about 2 ft. above ground. Thence west 1904 vrs. and set rk. md. on point of mtn. for S. W. cor. 849; thence N. at 1085 vrs. set rk. md. on backbone of mtn. for S. E. corner No. 850.5 and N.E. cor. No. 852-N1/2-. at 1898 vrs. set rk. md. on north slope of mtn. for N. W. cor. No. 849, and S. E. cor. No. 850.5. Thence east and along north line no. 849, 678 vrs. and set rk. md. for S. E. cor. No. 850.2 M. Talbot; thence north 287.5 vrs. to connect with rk. md. on east slope of mtn., designated by Mr. Chism in his survey of Oct. 16th, 1911 as the S. W. Cor. No. 943, H. Herrera fr. wh. a Cedar 15" mkd. X brs. S. 84 E. 26.5 vrs. -standing and plainly marked- White Oak 5" N. 45 W. 4.5 vrs. -gone.

Field notes for the three surveys abovementioned herewith for your ~~approval~~ examination and approval.

|| It appeared from this surveying that their lies a strip of un-surveyed land between 943 south line and Nos. 848 & 849 north lines. Original field notes of these three surveys do not call to connect along their north and south lines respectively, nor do the original notes of the Herrera survey call for the witness tree at its S. W. corner. In determining the true north line of survey No. 848 and 849 I did the following additional work on the ground: Beg. at N.E. cor. Sur. No. 62, J. Emil, found L.O. brg. 9" N. 15-15' W. standing, plainly marked. E. J. 10" N. 64-30' E. 36.4 vrs. -gone., thence north 1174 vrs. to fence corner for N. E. cor. No. 848. thence west 500 vrs. to rk. md. for S.W. cor. No. 848 1/2 Jones.

Beg. at orig. S.W. cor. No. 848, (both bearing trees standing) thence north 1898 vrs. set rk. md. for N.E. cor. 849 and N. W. cor. 848.

In the attempt to locate the original N. E. cor. Sur. No. 943, H. Herrera, I began at rk. md. with cedar brg. as established by Mr. Chism, or called for by him in his survey of Oct. 1911, for the S.W. cor. 943, and ran line north at 1087 passed the orig. S.E. cor 1037, T.C. Ry. Co. at 2787 found fence running east at 2887 found no =

counter 35065

nothing to indicate original north line survey 943 or south line No. 942, Olivarrig. Following old fence line running east at 2787 I find that its course holds true and along the line several backed trees as line trees were found. At 2887 vrs. found old fence corner with cedar post 15" dia. for corn r post, fr. wh. a P.O. stump, 20" dia. and cut off 5 ft. above ground brs. N. 22 W. 4 vrs. P.O. 20" S. 32 E. 8 vrs. rotted out and lying on ground. No. marks distinguishable on either tree. No. sign of corner found 100 vrs. farther north.

It appears to me from these findings that an error of exactly 100 vrs. was made in measuring the west line of 943 at the time the Cedar bearing tree was made at its S. W. corner. Kindly forward to me your interpretation of the above findings on the ground and advise whether in case of making field notes for unsurveyed strip south of No. 943 its northwest corner should be placed where the rk. md. and cedar bearing tree are or one hundred varas farther south?

Mr. C. C. Mitchell of Utopia, in whose pasture lands the above land lies has made application for purchase of the vacancy in case there should be one established. His Application has been filed for record in Uvalde County Surveyor's Office but has to date not been returned to me for sending to your Office for filing.

I am also enclosing pencil sketch showing distances along lines of 815, 854, 891 and 892 by which the distance of 148 vrs. along the N.E. line of 891 from its N. E. (orig) cor. S. 20 W. to N. W. corner No. 892 was obtained. This said N. E. line 891 runs over very rugged mountains and it is very difficult to obtain the true horizontal distance along it with a tape, -the method used in the first instance.

The check line shown runs over more level terrain in the main and compares very favorably with the west line of No. 891, which also runs over more favorable measuring ground. In compliance with your instructions in your letter of March 19th, page 2. paragraph one, the north line of 892 has been placed 1142.5 vrs. N. 16 W. from the south corner of 854, in view of the fact that this will place the said line farther north than if placed 1029 vrs. N. 20 E. of the south corner of No. 891 as the measurements on check line and west line of 891 show. In my opinion the field notes for the H. I. Christmas survey No. 854.5 as well as those for each of the two parts thereof should stand and remain as they were last drawn and sent to your honor for examination.

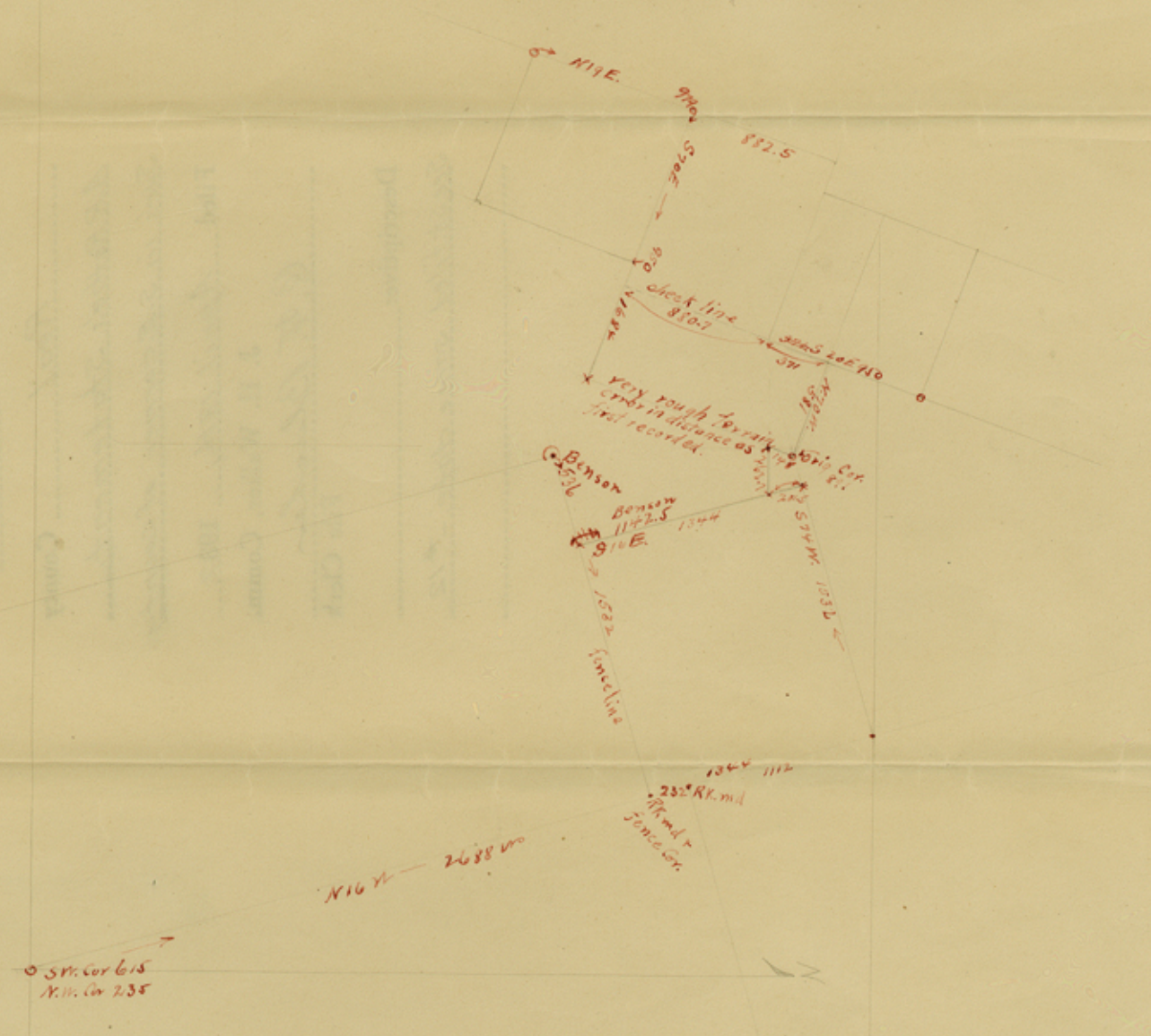
Mr. H. I. Christmas informed me that when field notes are finally approved for all of his lands he wants to have them all patented. Statement, however, is to be sent to him as I am not acting as his agent in the matter of securing patents to his lands. I shall see him again in a few days and will try to spur him up a bit.

After examination of field notes sent herewith please return with comments, also I shall thank you in advance for answers to all other matters involved.

Very truly yours,

Arthur H. Roche.

SF 9626  
see next page for sketch.



Sketch File No. 11

Real County

A.R. Rother's Statement

Sur's in S.E. corner of County

Filed April 18th, 1932

J. H. Walker, Comm.

C. F. Blucher

File Clerk

Descriptive: \_\_\_\_\_

See st. filed same date, #12

\_\_\_\_\_