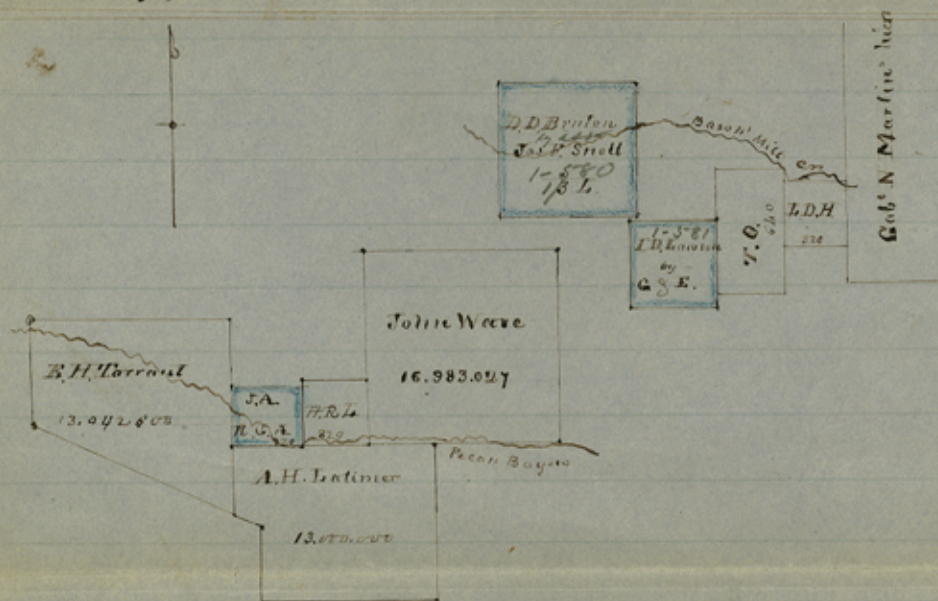


A Sketch accompanying the surveys of Isaiah D. Lawson by Giddens and English asigned for D. D. Bruton by James B. Snell of 1850 and Rufel G. Anderson by Jesse Adams of 1850 with some of the patented surveys which they join or connect to.



Expl: L.D.H. - Lorenzo D. Anderson 220 Begins 2630 on N. of L.S. Martin's line cont.

I.D. Lawson, Survey of 2,176.965 for R. J. Giddens & C. English asigned.

Begins 1231 on South and 1410 on West of the S.W. corner of L.S. Anderson's survey  
D.D. Bruton Survey made for James B. Snell of 1850. Begins 2666 on East and 6114 on N. of the S.W. corner of John Wace's 16 - labor survey. — The S.E. corner of the Bruton's 13 leagues

is 220 on East and 5 1/2 on North of the S.W. corner of the I.D. Lawson survey  
This survey will show a connection with the other surveys with those of Pecan Bayou at this point having run these surveys, from surveys on each respectively.

J.A. - Rufel G. Anderson by Jesse Adams of 1850. One surveyed for W.D. Burnham but lifted and conveyed on the S. side of Sulphur

Williams B. Cr. Jun 24

Rufel G. Anderson witheld by J. Adams for the present

File 3

---

---

Dred River Co

on Pecan Bayou

Received April 16<sup>th</sup> 1856

---

---

7 $\frac{1}{2}$  miles N 13 E from  
Clarksville.

Sketch of Survey

J. D. Lawson by ap<sup>ts</sup> c. &c

David I. Brutus by ap<sup>ts</sup>

of James J. Snell & others