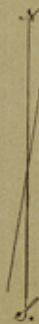
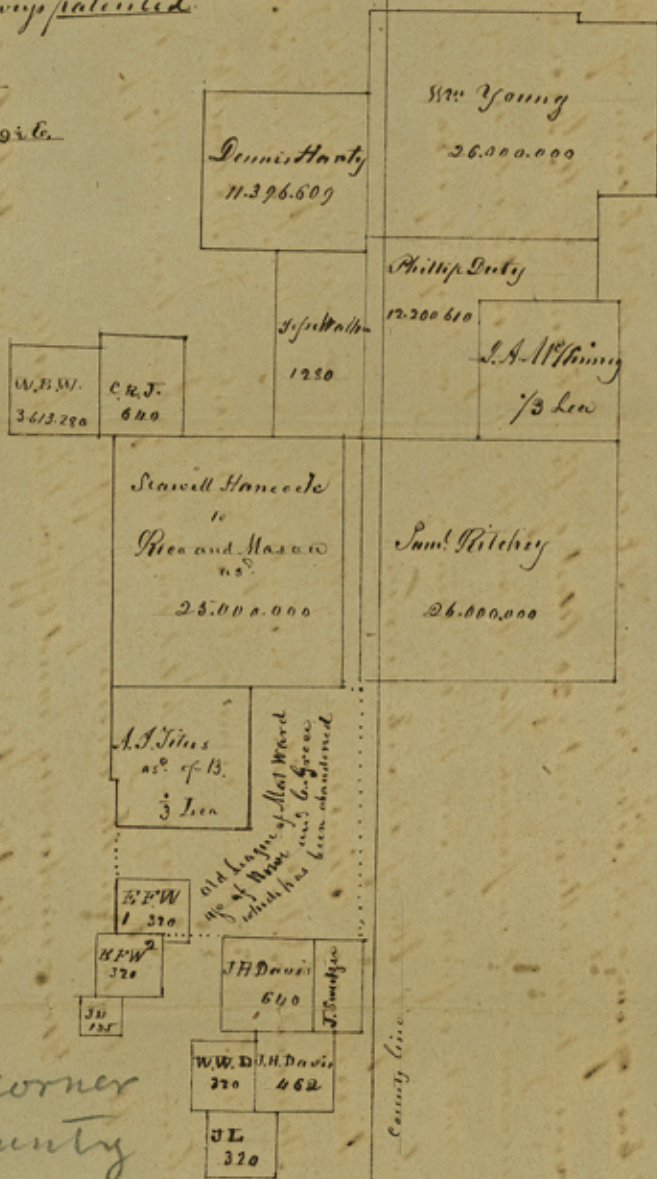


A. Sketch showing surveys along a part of the County line beginning the corner of Bowie and Red Rivers corner Samuel Ritchey League with other surveys patented.

Scale here to inch



Var 91.6



S. E corner
of County

Ex^{to}

- W.B.W. 1/4th B. Ward by S. Ward side.
 C.R.J. Clement R. Johns .. J.H. Darnall
 1. B.F.W. C.F. Walker part of old L. abandoned
 2. B.F.W. C.F. Walker south of same
 J.D. John Dillard 125 acres
 W.W.D. W. Davis 320 "
 J.L. " Joseph Lupton 320 "
 J. Sewitzer - John Sewitzer 315 1/2 "

There is uncertainty perhaps in the locality of Sam Ritchey survey. The Record field notes call to begin in the
 the E. 1/4th of Henry D. Mason survey 7 or 8 south of Adams N. E. corner, running E. S. W. and N. E. beginning
 West - John A. Anthony's line calls to begin at the N. E. corner of an old survey, June 14th 1846.
 Phillip's Duty, begins at Jos. A. Anthony's S. W. corner, runs West with Ritchey's line 2335. to Jos. A. W. corner
 Sam N. 3886 to E. Hartley's S. E. corner 4186 to W. Young's S. W. corner, &c.
 Joseph Walker (1250). Begins at Phillip's Duty's S. W. corner, runs North with Dr. W. H. line 3915 to Dennis Hart's S. E.
 (West 1847). So. 3915 to Seawell Hancock's (or Rice & Hancock) S. E. corner, with S. Truste, the by way
 This seems to make it right to say the Ritchey, S. W. Duty, S. W. corner, Jos. Walker, S. E. corner, and the S. E.

cor. of the old survey Seawell Hancock (Rice & Mason) was intended for and is the same place, the bearing line of Duty, & Walker survey proves this, which place when I corrected the Seawell Hancock survey I saw & noted which correction of the S. Hancock survey, the S. E. corner of which was drawn back West along Walker line 321 is three rods so to the original S. B. line of the first survey so as to make just the league, leaving a space that wide between the surveys of Hancock & Ritchy.

The old league of G. Groce in M. Ward, which has been vacated is shown by the dotted lines in part, having run off one of its 1/3 L. for A. J. Titus 320 for E. J. Walker

The sketch heretofore sent is correct, as to the S. E. corner of John A. Davis' 640 & that W. corner of John Sedwiz's and is 2262 vs. South, and 1376 East from of A. J. Titus' 1/3 league, S. E. corner, or the S. E. corner of J. B. Davis' 640, marked DP answering to the call is just 920 West of the S. E. corner of G. Groce League

I have ascertained by actual measure and inspection, that W. Sims the surveyor called for the wrong place as a corner, as no corner or line lead to or from it, save the one run by him for Bryarly or Davis in the S. B. of the G. Groce league survey and is 920 W. of its S. E. corner.

In this sketch there is another discrepancy. Sims in making the G. R. Johns. Survey call to begin 305 W. West. of Rice & Masons (Hancock) S. W. C. Whilst A. Taylor who runs M. B. Ward call it 380 W.

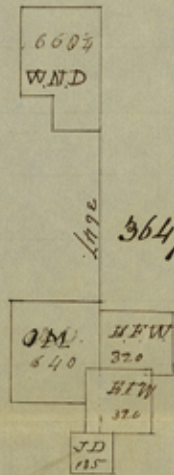
Note, I have corrected on the record the beginning corner of the S. F. Bryarly or J. A. Davis 640 as by the G. S. Commissioners request. — The foregoing sketch with its explanations, I certify to be correct, so far as I have been able to do from the record of my office

Given under my hand Office Clarksville
July 18. 1855.

William D. Carl District
Surveyor Red River District

Connection of Surveys S. E. of Clarksville Red River Co.

William D. Dillard 666 1/4 acres patented



3647 m from Dillard S.E. to Morse N. E. & due So.

References

O.M., Old and Survey made for Ore Morse

E.F.W. Two surveys is from the Head right certificates of Elias F. Walker 320 acres each

J.D. part of Certif. N^o. 181., 135 acs., Head Right Certificate of John Dillard

It is due South from the South East corner of Wm. D. Dillard, 666 1/4 acs survey, or at 3647 varas, to the North East corner of Ore Morse's Survey of 640 acs.

I certify that the above is a true representation, with the connection or distance of locality of the above named surveys of land as by actual survey appears

Given under my hand May 21st 1853
at Clarksville

William D. Orr Sur
Red River District

Commissioner
of the
General Land
Office
Austin

Plotted on map
Oct. 31/53
Creechbaur

File 6

Red River Co.

On the East County line thereof
West of S. Hancock & Christian's
Groves' Leagues

1. On Map
2. Recd Sept. 10th 1855

S. E. cor. of County