

The accompanying sketch has been compiled from the Purseyors statement and covered field notes of Jas Cookston, H. Hallings and W. Dunn's surveys.

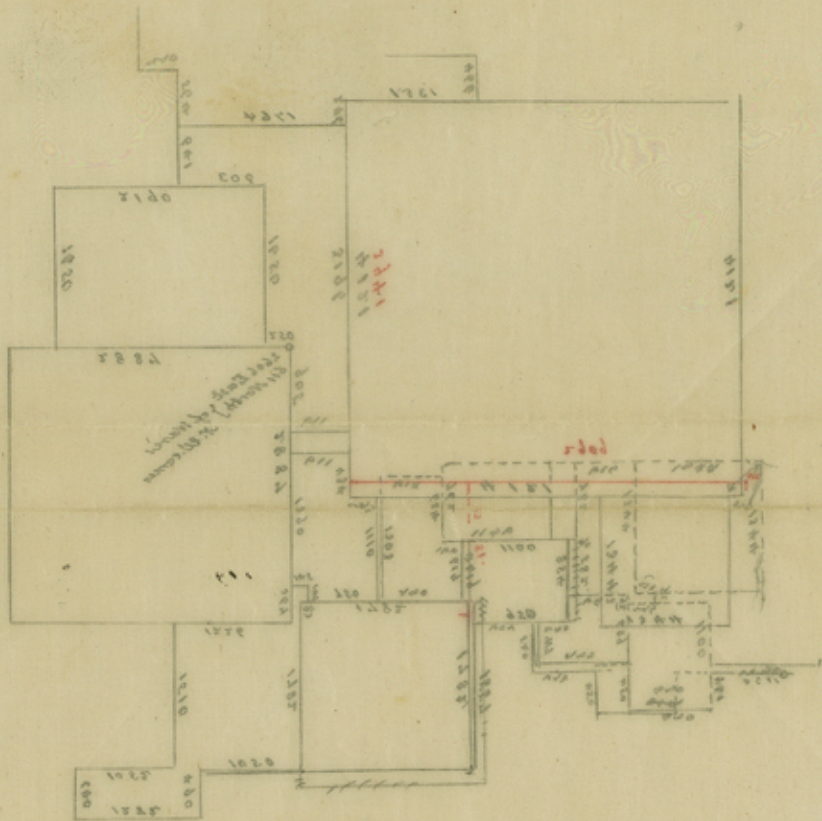
This connection will locate D. D. Bruton's  $\frac{1}{2}$  league and the surveys connected with it, as A. J. Witt, Peter, Vixen, S. D. Lawson etc. further North and East, than they should be by their own connection. Bruton's S.W. corner begins 2606 on East and 611 on North of John Ware's N.W. corner.

Richard Smith's S.W. corner is 120 on North of John Ware's S.E. corner.

As these surveys are old pt'd surveys, their connection cannot be changed on a mere Certificate of non-conflict, but the Purseyors should send

official statement with sketch, showing which of the original corners of John Ware, Rich<sup>d</sup>. Smith, S. D. Lawson and D. D. Bruton have been found and give the courses and distances as found on the ground between the corners, which have been identified.

W. Dunn P-257 $\frac{1}{2}$ , J. Cookston P-<sup>132</sup>132 and H. Hallings S-689 Red R. have been suspended until the above information has been furnished



21.

Red River Co

counter 35155

Sketch & information  
sent Surveyor Oct 21/80