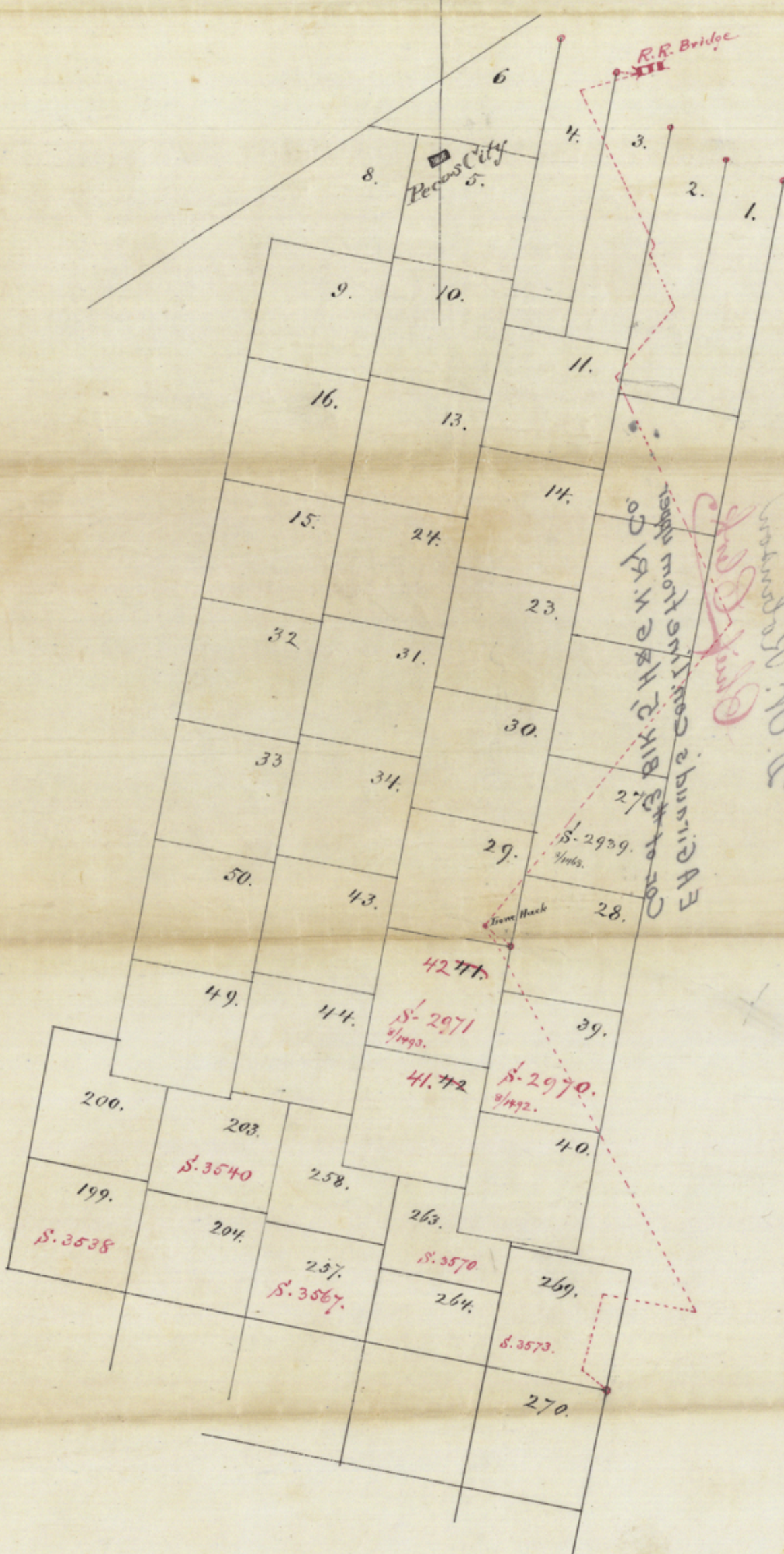






21/22/23/24/25/26/27/28/29/30/31/32/33/34/35/36/37/38/39/40/41/42/43/44/45/46/47/48/49/50

N



*Handwritten notes in red ink:*  
 R.R. Bridge  
 Stone track  
 E.A. Girard's Cont. 1/2 from 1861  
 Cor. of the Bk. of the W. & A. Co.  
 J. G. H. & Co.  
 J. G. H. & Co.  
 J. G. H. & Co.  
 J. G. H. & Co.

Reeves Co

*Handwritten numbers and values in red ink:*  
 42.771  
 \$-2971  
 9/1893.  
 41.772  
 \$-2970.  
 9/1892.  
 200.  
 199.  
 \$-3538  
 203.  
 \$-3540  
 258.  
 204.  
 257.  
 \$-3567.  
 263.  
 \$-3570  
 264.  
 269.  
 \$-3573.  
 270.



Field notes of a connecting line from the upper corner of Survey No. 3, Block No. 5, H. & G. of R. R. Co, on the south bank of the Pecos River, to the South East corner of Survey No. 269, Block 13, H. & G. of R. R., on Toyah Creek.

Beginning at an earth mound surrounded by four pits, recognized as the upper corner of Survey No. 3, Block No. 5, on South bank of Pecos River. Thence S.  $84^{\circ}15'$  East 286 varas to the centre of the track of the S. P. R. R., at the West end of the R. R. bridge. Thence S.  $72\frac{1}{2}^{\circ}$  West, along the centre line of track, 854 varas to the point of curve. Thence S.  $25^{\circ} E.$  2600 varas. Thence S.  $28^{\circ}30'$  West 160 varas. Thence S.  $25^{\circ} E.$  940 varas. Thence S.  $40^{\circ} N.$  1400 varas. Thence S.  $25^{\circ} E.$  4200 varas. Thence S.  $39^{\circ} N.$  <sup>at</sup> 5883 varas, the main head of a spring near a lone hackberry, <sup>marked X</sup> bears N.  $38^{\circ} N.$  about 80 varas; at 5905 varas cross creek from main spring; at 5920 varas the edge of a large water-hole; at 5935 varas the other edge of said water-hole; 6057 varas to the lone hackberry taken as previous bearing. Thence S.  $45^{\circ} E.$  543 varas, a cedar post 6 inches in diameter marked XXIX, set for the S. E. corner of Survey No. 29, Block No. 5, returning to the lone hackberry.



Thence S. 0° 15' W. 64 varas a cedar post 5 feet  
high, from which the lone Hackberry, marked  
X, bears S. 0° 15' E. 64 varas, a spring with  
set barrel bears S. 22° 15' W. 22 <sup>4</sup>/<sub>5</sub> varas, and  
the head of the main spring S. 57° 15' W. 272  
varas. Thence S. 28° E.; at 2520 varas the point  
where Hackberry Spring empties into Salt  
Lake bears S. 88° 15' E.; at 2937 varas cross  
small creek, <sup>course</sup> looking up, S. 68° W.; at 3520  
varas, mouth of Hackberry Spring bears  
S. 60° 45' E.; 6891 varas to a point. Thence  
S. 78° W. 1488 varas to a point. Thence S. 11° 45'  
W. 1206 varas to a point. Thence S. 50° E. 400 varas  
to an earth mound near south bank of  
Soyah Creek, about 1/4 miles below the lower  
falls of Soyah Creek, being the S. E. corner  
of Survey No. 269, Block No. 13, which earth  
mound is 26 miles North 13° E., and 14 miles  
S. 78° E. from the S. E. corner of Survey No. 19,  
Block 13.

Variation, 11° 20' East.

C. H. Straud  
Deputy Surveyor  
Pecos Co., Tex



Wm. H. ...

James ...

1885

Examined & recorded  
this 24<sup>th</sup> day of October  
AD 1885, in Book No. 5  
of Applications for  
Divorce on Pages 34 & 4  
E. H. Bates  
Judge or Peer County

Filed  
Nov. 2 - 1885