

Scale 1000 rods per inch.

Surveys on Toyah Creek  
 Pecos Co. Tex.  
 Made by Order of the Hon. Dist. Court  
 Dec. 1872. J. W. Tays  
 Surveyor



Reeves Co Sk 7 1/2

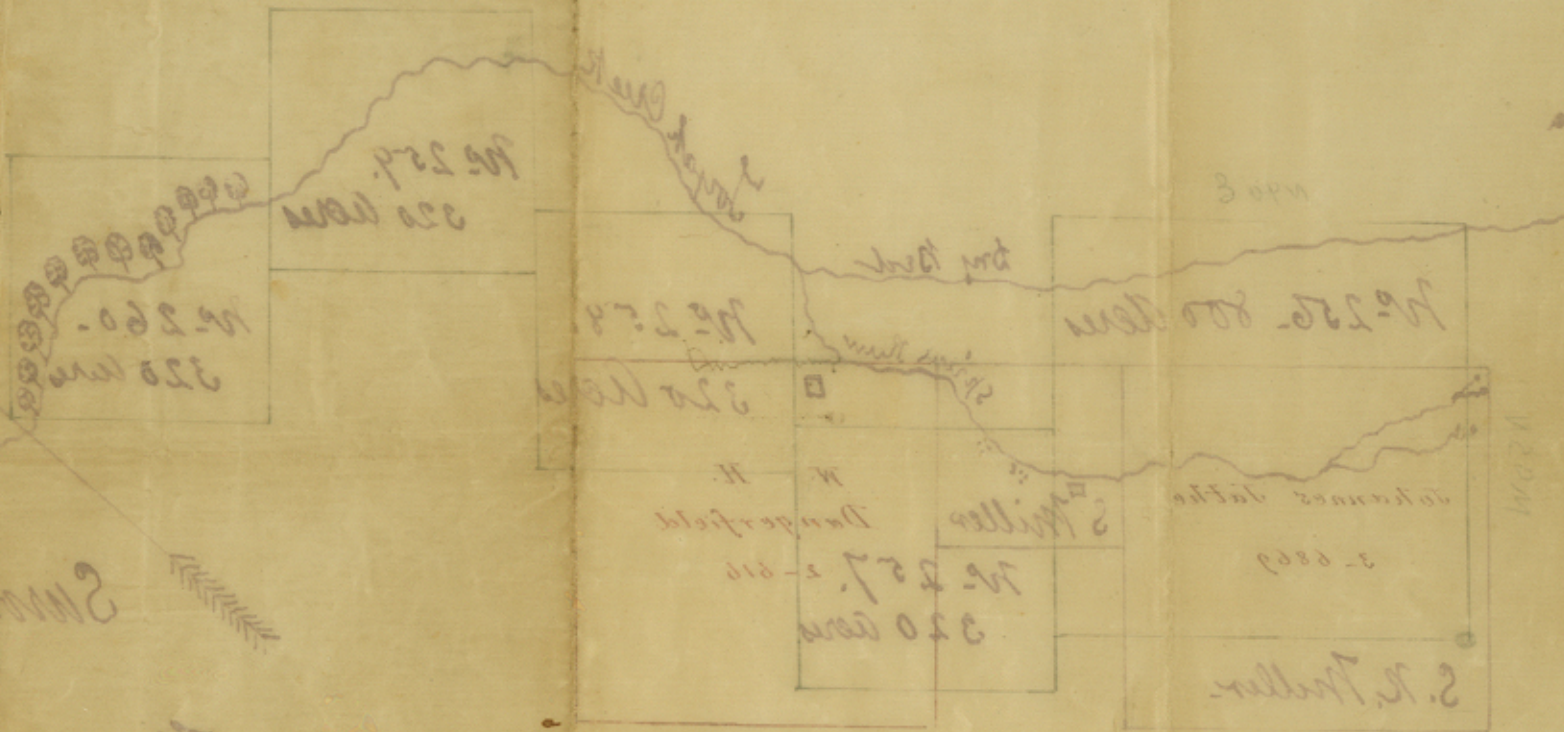
File 14.

Presidio Coun

Filed April 10th 1873

Toyah Creek.

REEVES CO,  
file 14



Swamp  
 Marsh  
 Wood

Scale 1000 feet per inch.

counter 35193

counter 35193