

commissioner of the  
I, J. White Shively certify that the  
annexed is a true & correct sketch of

face

9



File 2

Robertson County

Rec<sup>d</sup> 9<sup>th</sup> 1838

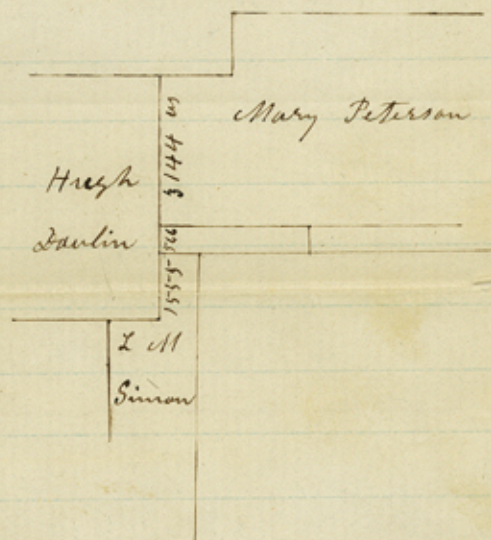
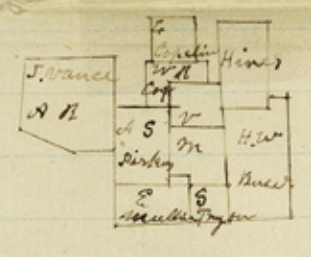
North-W- East part.

counter 35344











J. H. G. 1.  
 Robinson County  
 J. H. G. 1.  
 J. H. G. 1. 1871

The State of Texas - Certificates of Claims  
 County of Robertson of Vicenti Mindez

Vicenti Mindez 2,047,500. Sqr vs Conflicted  
 with S. W. Lane & B. Gage Survey Corrected and  
 reduced to 736,185 Sqr vs See Sketch B Gage  
 north line 2862 vs long thence I run S 30 E To S W  
 Lane which line is 2994 vs thence S 60 W - 507 vs  
 to Lane at W corner bearings agreeing with the  
 field notes on Record it is evident that Gage  
 west line was not run as there cannot  
 be found old marks more than 100 vs  
 from his N W corner and the line running  
 at S 20 1/4 E runs from his N W corner to  
 his S W corner on Ann McMullan as given  
 in his field notes on Record the sketch  
 given is a correct map of the lines marked  
 on the ground the dotted line is where the  
 true lines should be I ~~put~~ state that  
 I ~~measured~~ the line you see that Gage is 107  
 vs two large the other way

Sketch file 1.  
 file 1-775  
 p. 1.

Mindy 274,220 sq vs I did not measure  
 S. W. Lane E line but measured from clays  
 at W corner to Farris finding it 250 vs  
 S. W. Lane E line being the same as Gages  
 107 to Long Leaves but 22 vs conflict with  
 Farris

file 1-1020.

Mindez 1,376,550 sq vs Length of 5 Coars  
 944 vs See Sketch for boundaries

file 1-963

Mindez 2,761,768 sq vs I cannot find such  
 a survey as J. P. Atkinson on Record in my office  
 See sketch of boundaries

file 1-1020.



Andrew Mcmillan Bounty 896

I run the Line from the S. E. Corner of H Sawlin  
to L M Snions N W Cor finding it Correct  
1555 us Long One of the bearing Trees at this  
Corner is gone the other Correct The Line from  
Mary Peterson S. W Cor I find to be but  
3144 us Long to his N W Corner Leaving a  
Conflict of but 28 us but the 566 us Given  
in Mcmillans field notes is actuly there

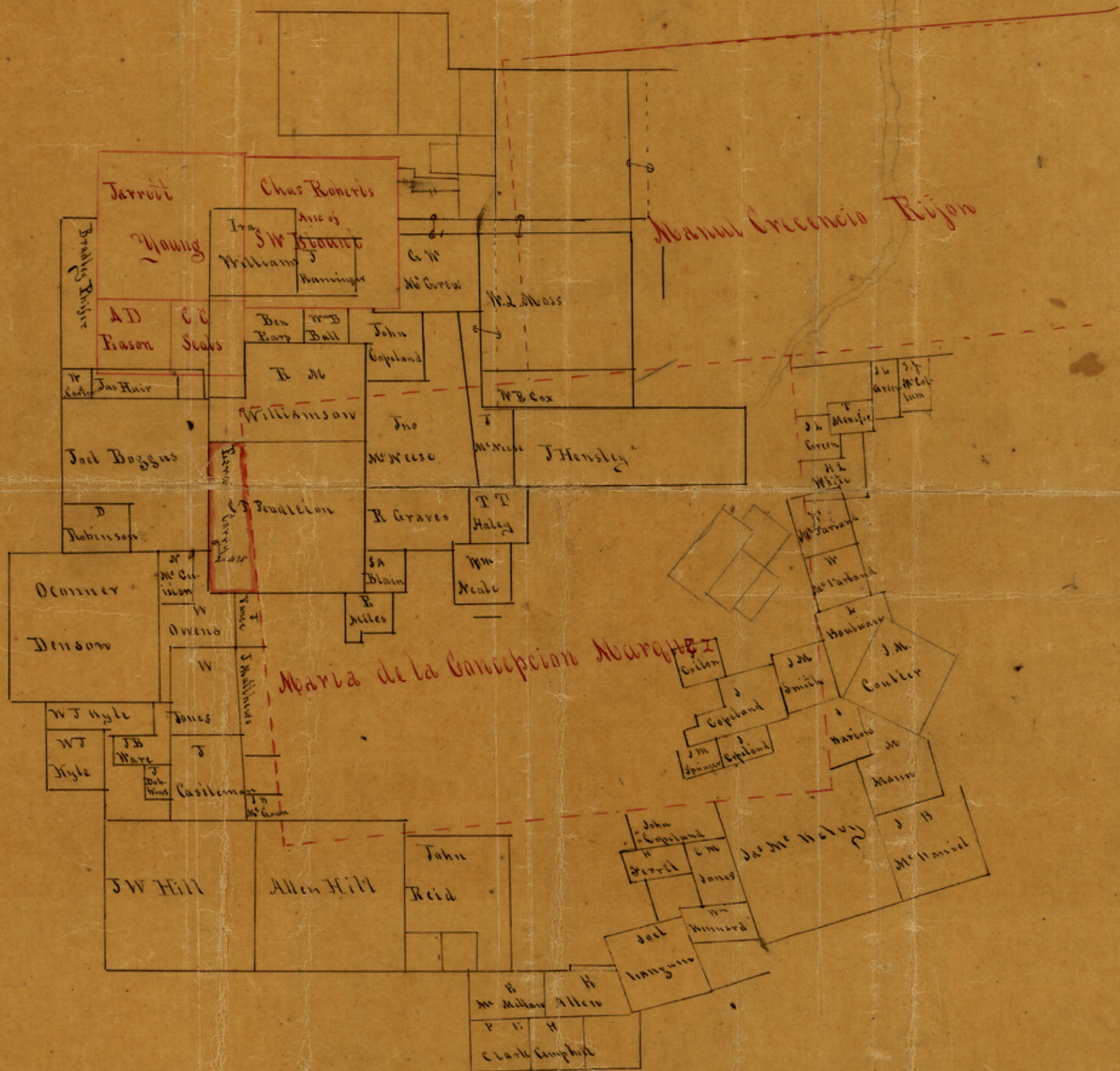
file B-896  
I also run Petersons South Line finding  
it plainly marked at 60 E with a slight  
variation to his S E Corner this Corner  
I find Correct as Given and on record  
in my office The size of the Post Oak  
at Peterson S W Cor on Sawlin agrees in  
size but the Letter E as Given in Peterson  
Field notes Proberly was intended for the H that  
is on it The B J Given is not to be found  
They is decayed timber a round ~~Sam~~  
and it may of decayed all Lines running  
from that Corner show it to be Peterson  
S W Corner

I, A. J. Jackson County Surveyor of Robertson  
County hereby Certify that the surveyes Given  
in the fore going Certificate is Correct as Given  
on the accompanying Sketches and plat and as  
stands on record in my office at Owensville  
Given under my hand

This February The 7<sup>th</sup> day 1861

A. J. Jackson  
County Surveyor  
R. C.





I, Jno. J. Oliver District Surveyor for Robertson Land District do hereby certify that the above is a correct sketch from the maps of my office and that it represents the true <sup>division</sup> of the Marquez claim league grant and the E. Garry 1240 acre survey, also the Benjamin Corp and W. Ball 520 acre surveys, as found by actual measurement upon the ground

Given under my hand at office this 15<sup>th</sup> day of June A.D. 1858

Filed July 9/58  
C. W. Pfeifer.

counter 35349

Jno. J. Oliver  
Dist. Sur. R. D.