

N^o 514

N^o 515

J.

18

N^o 17
1917

1900

1900 3570
N^o 325 955

123

123

1900

124

1900

1990

N^o 323
N^o 322

125

1900

J. P. Wallace

4320

126

1900

N^o 320

127

1900

128

1900

315

129

1900

237
320

137
137

135

130

121

1400
122

320

B. Y. Gillman
N^o 312

120

70

119

69

310
N^o 310

1900

counter 35434

File #4

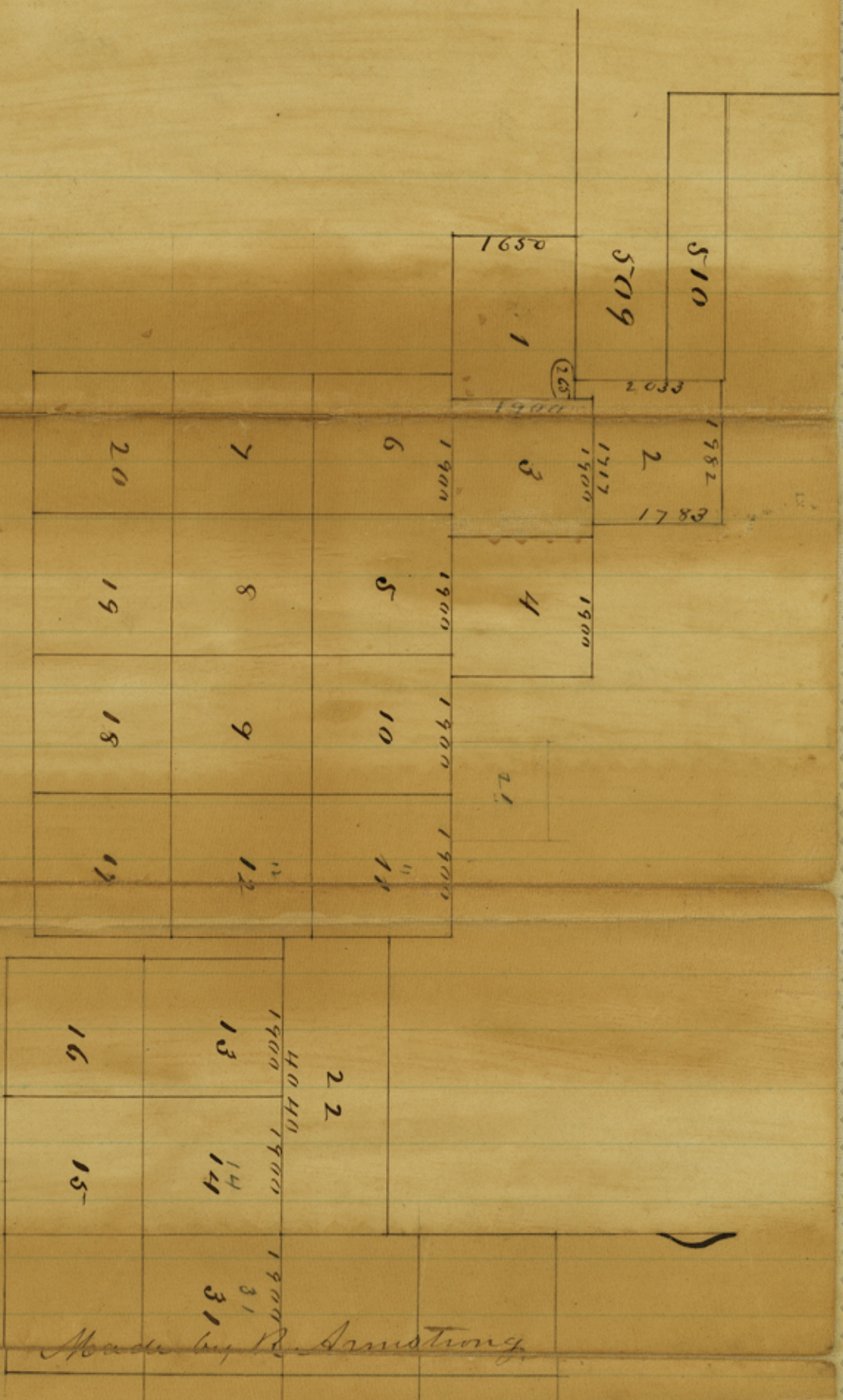
Runnels Co.
Surveyor sketch. 8/8/71.

Coleman - Runnels Co. line

Repaired
Apr 1953 - Janders

counter 35435

Belmont & Business City



I L. Suckett Deputy Surveyor do hereby certify that the above sketch is true & correct & shows the position on the ground of survey no 579 made by H. S. Nelson & no 31 made by R. Armstrong 8th August 1871

L. Suckett
U.S. S. D.

counter 173371