

Sketch 15.

Runnels Co.

Sketch and connections

Filed Sept. 9/84.

SE part of County.

S-16119

S-16074

S-50608

S-50545

D-2738-39

The State of Texas } This is
Colman County } to Certify that
J. G. Evans County Surveyor of
Colman County Texas on the 29th
November 1883 began at a stone Md
shown me by R. S. Bowers for the
S W cor of Survey No. 127 N. E. & W. T.
R. R. Co situated on waters of Grape-
Creek in Colman Co Thence
North variation 9.41 - E 1870 ws
cross a branch 2129 ws to a Large
Stone Md supposed NW corner of said
127 - Thence North 1600 ws cross branch
1788 ws at Md Thence West 2290 ws
Thence South 26 ws to Stone Md
S. W. cor of No. 110, G. A. & N. R. Co,
Thence North from said corner
of 110. 1900 var to NW cor of same
Corner O. K. I now went to the
Mouth of Concho River on the
East Bank of Colorado river
Being on the upper bank East
of the Mouth of Concho - R -
Thence North 1201 ws and West 28
ws to a point on first bank of Colo-
rado River which I take for
S E corner of the Gas Light S. & S.
survey No. 227 and S W cor of
Bozoria Co Sch. L. & Sur 224 -

Thence North to 600.00 Cross Grape
 Creek 8390 & put up stone mound
 for NW corner 226 - We then go
 to the SW cor of Survey No 127 -
 above described and from this
 point run West 947 to the
 St md made for NW cor of 226
 Thence as described in field
 notes of the Survey No 160
 I certify that the above
 is a true statement of the
 Surveying made by me
 This Dec 18th 1883. (Recorded
 in Rec Book No 1 pag 17. J. J. Evans
 Co Sur Colman Co Tex

The State of Texas. } This is to certify that
Coleman County } J. R. S. Parramore while
acting ^{Supt.} County Surveyor of Pecos County Tex.
began at the mouth of Concho River - on the
5th August 1849.

Thence $S 15^{\circ} W$; Variation 10° East -

Setting milestones every two (2) miles to Stone-
mill every mile -

3 miles and 348. Cross branch - C. S. Th.

16000 vs. the distance called for S. E. cor. of

Harrison Co. Scherlund could find nothing

21130 vs. or 11 miles + 230 vs. Cross branch Pt. of Th.

22010 or " " + 1110 vs. " " " " "

22800 " 12 " + 480 " Cross Mine Hollen C. S. Th.

29159 vs or. 15 " + 659 " to S. line of E.

P. R. Co. No. 140 - 7.29 vs. E. of S. Merdian.

30260 vs. or 15 miles + 1460 vs. E. Spring of

Mustang creek.

32420 vs. or 17 miles + 120 vs. N. pr. of Mustang cr.

32760 " " " " + 460 vs. to S. line of

⁵⁷⁵ Austin and Williams Survey No. 262

as established by me - and 487 ⁵⁷⁵ vs. West

from the S. E. cor. same. Which corner

was established by me 22nd July 1880 by

running from the identified S. E. Cor. of

the A. Lasoya sur. 515 - S. 75 W. 5235 vs.

+ S 15 E variation 9 15' E. - 5000 vs. to

said points - On August 19th 1881 - I went to

the nine mile point as above mentioned - and

in accordance with the connection with the

Lasoya corner here mentioned ¹⁵⁷ 7000 vs.

and ^{N 75 E} East 287 vs. (var. 9 15' E) and made

a stone mound for the S. E. cor. of Harrison County School Land.

On July 27th 1882. I began at corner made by N. H. Lockett Co. Sur. Rumrills Co. for upper or S. W. cor. of R. M. Williamson's Sur. N^o 231. and meandered the Colorado River down to supposed S. E. cor. Sur. 230. C. Montes. (For meanderings see plat hereto attached.) We then return to said upper corner of N^o 231.

Thence North Var. 93^o E. 3040 vs. cross Mustang cr. 4337 vs. ~~for~~ stone md. made by Lockett for S. W. cor. of Williamson Sur. 231.

Thence East 660 vs. cross Mustang cr. 1340 vs. a branch C. N. of N. 2500 vs. make a stone md. for N. E. cor. of said Sur. 231.

Thence South 1614 vs. and East 3535 vs. to S. W. cor. said Harrison Co. Schl Land.

Thence N 75^o E 2500 vs. to S. E. cor. of said School Land. (with variation 915^o E.)

Thence South ^{Var. 93^o E.} in all 1709 vs. and East. 2967 vs. to the S. E. cor. 108.1 N. W. cor. 110 - G. H. & H.

R. R. Co. a stone mound just on the West side of Grape Creek. Eluv N 66^o E 37 vs. cut off just above the cross - the other bracing down - We also found the S. E. cor. of 160 & N. E. cor. 149 - which corresponds with this corner - Chain Carriers Ashery, Frost and Orin Johnson for work done Aug 9/82 J. E. M. Cord and E. Boatright. C. C. for work done - July. 1882.

This 14th Dec 1883. R. J. Bowen

Deputy Surveyor

Rumrills Co. Mo.

J. L. N. Taylor Surveyor of Rumrills Co. Do hereby Certify that the above and foregoing Certificate of Connection was duly received

in my office on the 18th day of March
1884 - Book D. Pages 285 & 286

L. N. Taylor
Surveyor Runnels Co Texas

1
2
3
4
5
6
7
8
9
10
11
12
13
14
15
16
17
18
19
20
21
22
23
24
25
26
27
28
29
30
31
32

Sk. File 15
Runnels County

32 31 30 29 28 27 26 25 24 23 22 21 20 19 18 17 16 15 14 13 12 11 10 9 8 7 6 5 4 3 2 1

Sept 9/84
Robinson

BUS-49477

counter 35465

Runnels Co. Sk. File #15

65

The State of Texas } J. R. J. Porren Esq.
Columan County } County Surveyor of
Columan County do hereby certify - that
while acting as County Surveyor of Columan
County on 8th & 9th of November 1848. I began
at S. E. cor. of Survey N^o: 220 of J. F. Stauell situated
on the North bank of Colorado River in Columan
Co. Texas which was recognized by an Elm bear-
ing - Thence North 500 vs. Thence West 950 vs. \wedge
S¹ 172 vs. to bank river found mesq stump
with hacks - upon it and bear right for the
Corner. Thence N. 375 vs. West 260 vs. N. 80³ West
215 vs. stopped for S.W. cor. of Survey n^o: 221.
Thence North 340 vs. West 380⁵ North 50 vs.
West ¹⁴⁵ 175 vs. to mouth of creek. S.E. cor. of J. F.
Stauell sur. 223. Thence North - Thence
West 950 vs. stopped for S.W. cor. said Stauell
survey and S.E. cor. of Fort Bend Co. School
Land n^o: 224 - on the bank of the river
Thence North (Variation 10¹/₄ East) for the
East line of said School Land -
6900 vs. cross Elm creek -
13029 vs. make a stone md. - mesq 7¹/₂ in dia
S 24³/₄ E 24 20 4 in dia S 75¹/₂ E 37¹/₂ vs. for the
N.E. corner of said Fort Bend Co. School Land.
Thence West 612 vs. for N. line of Ft. Bend Co.
Schl Land - put up stone md. for S.W. cor.
Columan Co. School Land & S.E. cor. Survey N^o:
122 - 1905 vs. Stone md. S.W. cor. of N^o: 122.
2043 vs. cross branch.
3805 vs. Stone md. S.W. cor. 121 & S.E. cor. 119.

- 4440 Cross dry branch C. W
4630 vs. leave same.
5705 vs. stopped for N.W. cor. of Ft. Tread Co.
Schul. Land - make a large stone monument
on South side of branch - Connect this cor.
with the N.W. cor. of Ft. Tread Co. Schul. Land
as made by Faris. who subdivided the survey
for the Co. South 264 vs. and West 344 vs.
Thence North from said monument.
860 vs. branch course West.
1440 vs. another C. S. H.
1900 " Stone md. made for N.W. cor. 119-
3060 " dry branch. C. S. H.
3360 vs. stopped for N.E. cor. of Grayson
Co. Schl. Land - N-225. Large stone md -
Thence West 208 vs. put up stone md. for
S.W. cor. N-124.
490 vs. dry branch.
2560 vs. Dry branch C. South.
2880 vs. stopped for N.W. cor. of Br. Co. Schl. 225.
a large stone md. - S.W. cor. N-123.
Thence North 1352 vs. stone md. S.W. cor. 123.
1410 vs. cross Little Grape Creek.
2079 vs. N. E. cor. of Grayson Co. Schl. Land N-226.
Stone md.
Thence West 400 vs. stone md. S.W. cor. 125.
2170 vs. put up large stone md. for N.W. cor.
of Grayson Co. Schl. Land N-226. r
S.W. cor. of 127.
Thence North 1870 vs. cross branch. 2
2116 vs. put up stone md. for N.W. cor. 127.
We now return to the S.W. corner 124.

1 Thence South 1740 vs. same distance 30 vs. of
2 Grape Creek to the West

3 2230 vs. Cross said Creek

4 2600 vs. recross same

5 3200 vs. " " C. S. E. about 150 vs. above
6 the mouth of Little Grape Cr.

7 8390 vs. We like seemingly about one mile of
8 reaching the river.

9 We then run West in all 8310 vs. and
10 make a stone md. on the upper bank of the
11 Colorado River about 50 vs. West to the 1st
12 bank - Witness my hand at Coleman
13 this 17th day of Dec. 1883 -

14 R. S. Bowen

15 Ex. Co. Sur. Coleman Co. Tex -

16
17 The above certificate of R. S. Bowen
18 Ex Survey of Coleman County Texas
19 dated 17th day of Dec 1883 Received
20 and recorded in Record book No 1, page 16
21 of Surveying in ^{my} office This Dec
22 18th 1883

23 J. T. Evans

24 Co. Sur. Coleman Co. Texas

Sketch file 12.

Kennels Co.

Connecting lines
in N.E. portion of
County filed by
Thomson & Loman
Sept. 9/84.

J. N. Robinson

Chief Clerk

E. von Rosenberg
Examining Engineer

\$3 00

L L Taylor Co Surveyor of Runnels Co
 do hereby certify that I have examined
 the foregoing plat and find it correct -
 Runnels Tex Aug 9th A.D. 1884

L L Taylor Co Sur
 R Co Tex

Sketch File No. 15
 Runnels Co.

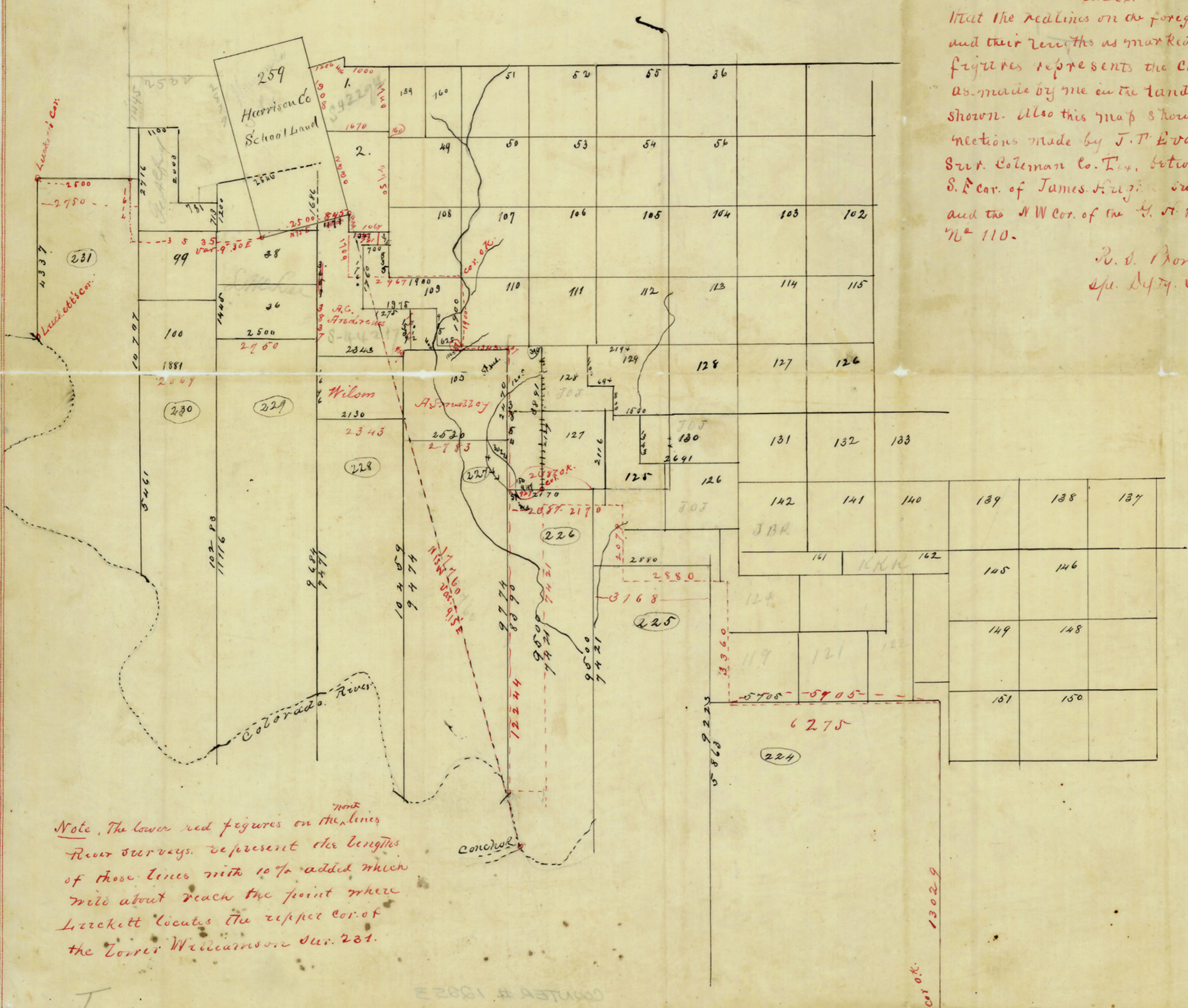
Wm. S. Bowen
 Surveyor

Coleman Tex

Aug. 4th 1884

Wm. S. Bowen Special Deputy Surveyor
 of Runnels Co. Tex. do hereby certify
 that the red lines on the foregoing map
 and their lengths as marked in red
 figures represents the connections
 as made by me in the lands herein
 shown. Also this map shows the con-
 nections made by J. T. Evans Co.
 Surv. Coleman Co. Tex. between the
 S. Cor. of James H. H. Surv. No. 227
 and the NW Cor. of the G. A. F. R. R. Co.
 No. 110.

W. S. Bowen
 Sp. Deputy Sur Runnels Co.



Note, The lower red figures on the lines
 River surveys represent the lengths
 of those lines with 10% added which
 will about reach the point where
 Lockett locates the upper cor. of
 the Lower Williamson Surv. 231.