

D-18

# J. S. MURPHY

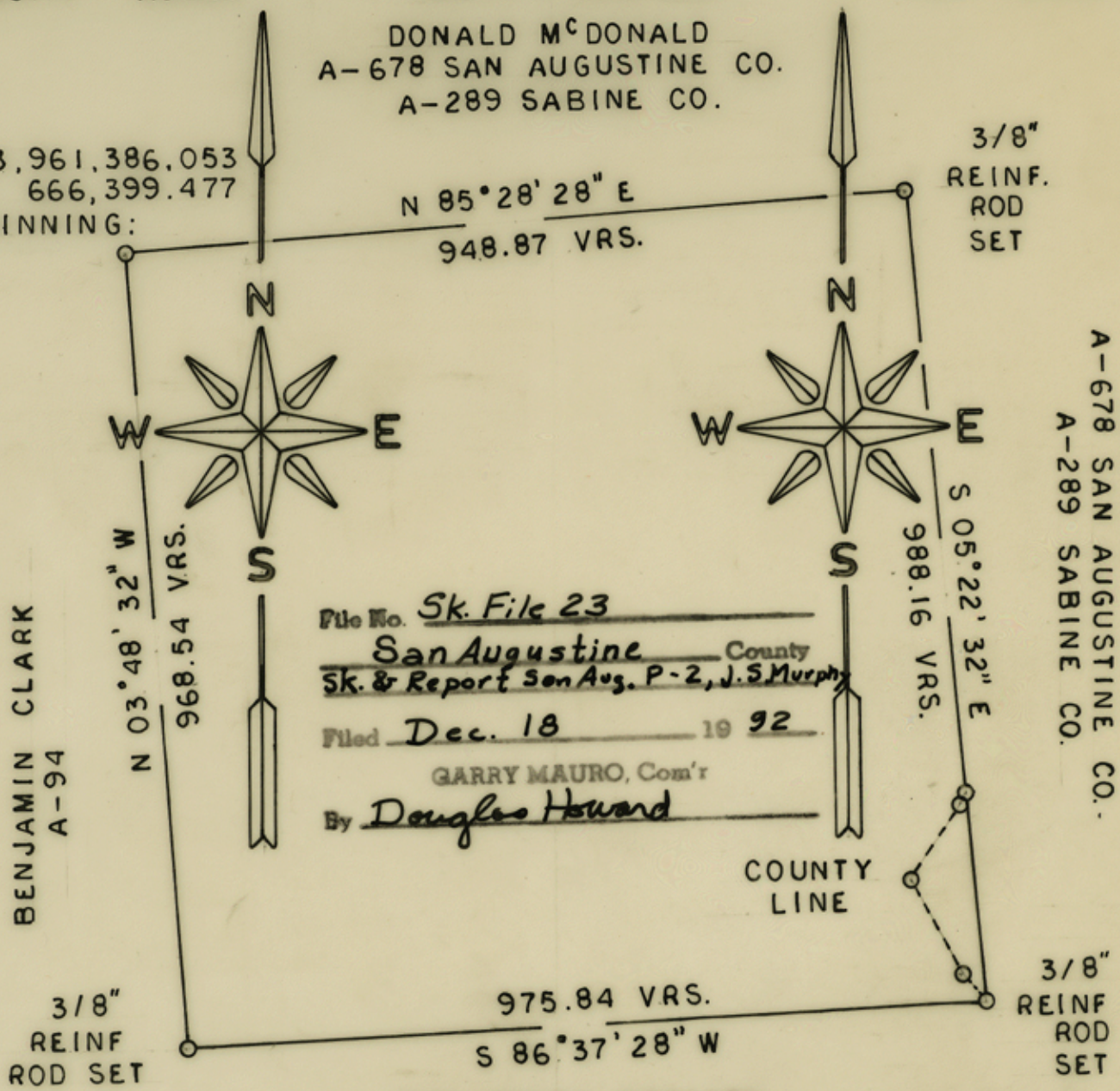
SAN AUGUSTINE COUNTY, TEXAS  
165.11 ACRES

PATENT  
166.74 ACRES

SABINE COUNTY, TEXAS  
1.63 ACRES

DONALD M<sup>c</sup>DONALD  
A-678 SAN AUGUSTINE CO.  
A-289 SABINE CO.

X=3,961,386.053  
Y= 666,399.477  
BEGINNING:



BENJAMIN CLARK  
A-94

DONALD M<sup>c</sup>DONALD  
A-678 SAN AUGUSTINE CO.  
A-289 SABINE CO.

File No. Sk. File 23  
San Augustine County  
Sk. & Report San Aug. P-2, J.S. Murphy  
 Filed Dec. 18 19 92  
 GARRY MAURO, Com'r  
 By Douglas Howard

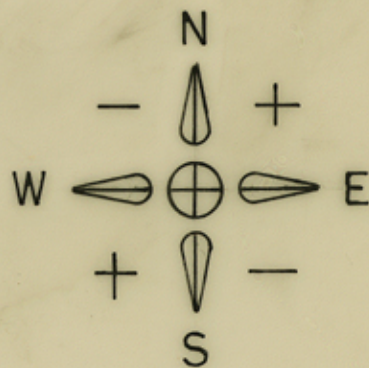
COUNTY LINE

3/8" REINF ROD SET

3/8" REINF ROD SET

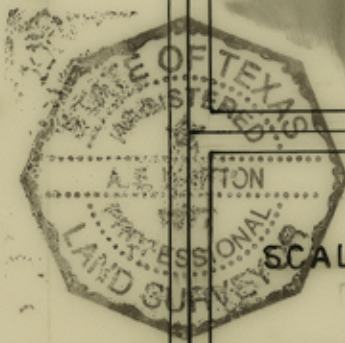
MRS. HULDA HOLLIEN  
A-679 SAN AUGUSTINE CO.  
A-285 SABINE CO.

I, A. E. WHITTON, A REGISTERED PROFESSIONAL LAND SURVEYOR AND COUNTY SURVEYOR, DO HEREBY CERTIFY THAT I HAVE PREPARED THE ABOVE PLAT FROM A SURVEY MADE BY ME IN THE FIELD AND ACCORDING TO LAW AND THAT ALL BEARINGS SHOWN ARE GRID BEARINGS REFERRED TO THE TEXAS COORDINATE SYSTEM CENTRAL ZONE AND THAT IT IS TRUE AND CORRECT.



03°22'32"  
TO MAGNETIC

*A. E. Whitton*  
 A. E. WHITTON  
 COUNTY SURVEYOR  
 REGISTERED PROFESSIONAL  
 LAND SURVEYOR  
 REG. NO. 1577



10-22-1992  
SCALE: 1" = 200 VARAS



# J. S. MURPHY

SAN AUGUSTINE COUNTY, TEXAS  
165.11 ACRES

PATENT  
166.74 ACRES

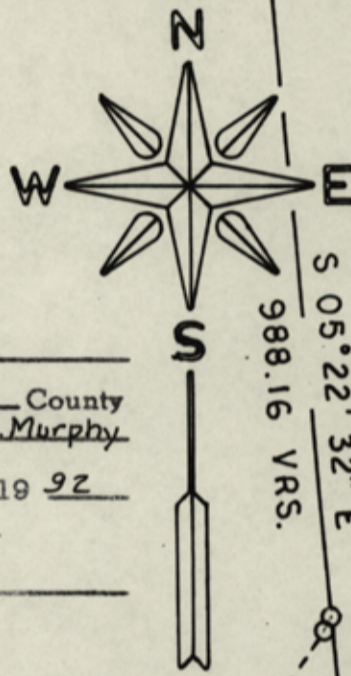
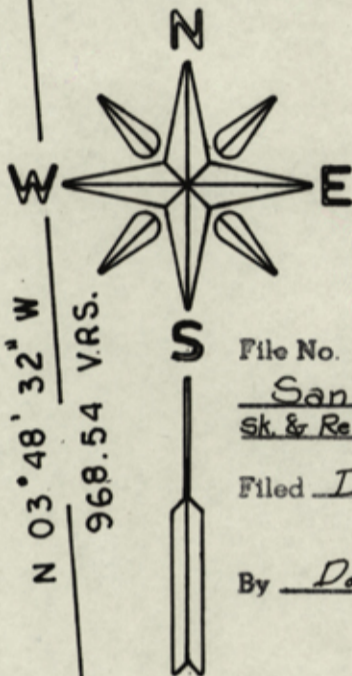
SABINE COUNTY TEXAS  
1.63 ACRES

DONALD M<sup>C</sup>DONALD  
A-678 SAN AUGUSTINE CO.  
A-289 SABINE CO.

X=3,961,386.053  
Y= 666,399.477  
BEGINNING:

3/8" REINF. ROD SET

N 85°28'28" E  
948.87 VRS.



BENJAMIN CLARK  
A-94

N 03°48'32" W  
968.54 VRS.

File No. Sk. File 23A  
San Augustine County  
 Sk. & Report of San Aug. P-2, J.S. Murphy  
 Filed Dec. 18 19 92  
 GARRY MAURO, Com'r  
 By Douglas Howard

S 05°22'32" E  
988.16 VRS.

DONALD M<sup>C</sup>DONALD  
A-678 SAN AUGUSTINE CO.  
A-289 SABINE CO.

COUNTY LINE

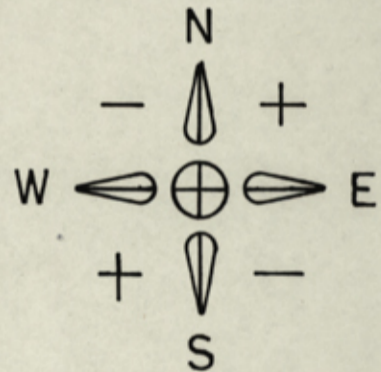
3/8" REINF ROD SET

975.84 VRS.  
S 86°37'28" W

3/8" REINF ROD SET

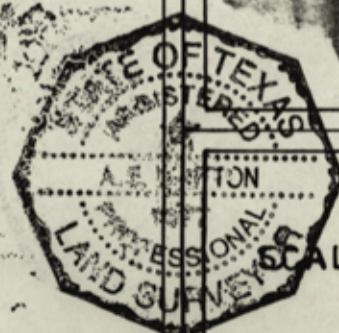
MRS. HULDA HOLLIN  
A-679 SAN AUGUSTINE CO.  
A-285 SABINE CO.

I, A. E. WHITTON, A REGISTERED PROFESSIONAL LAND SURVEYOR AND COUNTY SURVEYOR, DO HEREBY CERTIFY THAT I HAVE PREPARED THE ABOVE PLAT FROM A SURVEY MADE BY ME IN THE FIELD AND ACCORDING TO LAW AND THAT ALL BEARINGS SHOWN ARE GRID BEARINGS REFERRED TO THE TEXAS COORDINATE SYSTEM CENTRAL ZONE AND THAT IT IS TRUE AND CORRECT.



03°22'32" TO MAGNETIC

*A. E. Whitton*  
 A. E. WHITTON  
 COUNTY SURVEYOR  
 REGISTERED PROFESSIONAL  
 LAND SURVEYOR  
 REG. NO. 1577



10-22-1992  
SCALE: 1" = 200 VARAS.



TYPE OF INSTRUMENT

GRANTOR

GRANTEE

FILED FOR RECORD

THIS \_\_\_\_\_ DAY OF \_\_\_\_\_ A.D. 19 \_\_\_\_\_

AT \_\_\_\_\_ O'CLOCK \_\_\_\_\_ M

BY \_\_\_\_\_ COUNTY, CLERK

BY \_\_\_\_\_ DEPUTY

RECORDED

DATE \_\_\_\_\_ A.D. 19 \_\_\_\_\_

IN \_\_\_\_\_ COUNTY, TEXAS

RECORD OF \_\_\_\_\_

VOL. NO. \_\_\_\_\_ PAGE NO. \_\_\_\_\_

BY \_\_\_\_\_ COUNTY, CLERK

BY \_\_\_\_\_ DEPUTY

A. E. (Jake) WHITTON

SURVEYING & MAPPING

REGISTERED PUBLIC SURVEYOR

SAN AUGUSTINE, TEXAS

75972

counter 35693



S-U-R-V-E-Y-O-R-S R-E-P-O-R-T

Before beginning our survey of the J. S. MURPHY SURVEY to be Patented we obtained from the General Land Office copies of the DONALD Mc DONALD Patent of 1280 Acres A-289, Sabine County, Texas and A-678, San Augustine County, Texas the MRS. HULDA HOLLIEN Patent of 916 Acres A-285, Sabine County, Texas and A-679, San Augustine County, Texas and the BENJAMIN CLARK Patent of 160 Acres A-94, San Augustine County, Texas and a Working Sketch was prepared since these three (3) Patents surround the J. S. MURPHY.

Since the BENJAMIN CLARK was the Senior Patent we went to the field to the East Boundary line of the ARMSTEAD CHUMLEY LEAGUE, A-6, Patented 1835 in search for the North-West corner of the BENJAMIN CLARK. The DONALD Mc DONALD SURVEY is now owned by a Timber Company and the land has been clear cut as well as bulldozed and the witness trees have been destroyed, but a Concrete Monument was found Stamped South-West corner D. Mc DONALD KIRBY 6-77 set for corner.

We then measured East along a well marked line painted Red, at 799.25 varas another Concrete Monument was found Stamped KIRBY 6-78. The Patent call in the BENJAMIN CLARK was East, 800 varas.

We measured North along a well marked line painted Red, at 73 varas another Concrete Monument was found Stamped KIRBY 6-62. The Patent call of the DONALD Mc DONALD was North 73 varas, so our opinion since these two measurements checked so close to the Patent call, was the North-West corner of the J. S. MURPHY.

We then measured Easterly along a well marked line painted Red a distance of 950.40 varas. We made a search for the corner and witness trees, but as I have already stated this land has been clear cut and a barn has been built and the corner and witness trees have been destroyed.

We then measured Southerly across a pasture and found no evidence of a West Boundary line of the DONALD Mc DONALD, although at 585.66 varas another Concrete Monument was found Stamped KIRBY 6-59.

We continued Southerly along a well marked line painted Red and a fence, at 637.48 varas and another Concrete Monument Stamped KIRBY 6-57 was found set for an internal North-East corner of the MRS. HULDA HOLLIEN Patent and a internal South-West corner of the DONALD Mc DONALD Patent. According to the DONALD Mc DONALD and MRS. HULDA HOLLIEN Patents the South-East corner of the J. S. MURPHY should be North 235 varas from this corner.

We measured back the 235 varas and set a stake for the South-East corner of the J. S. MURPHY.

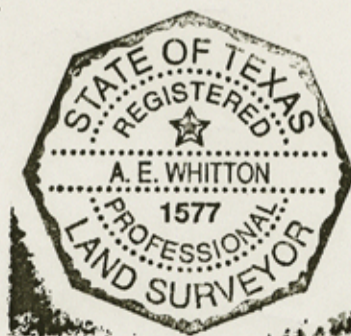
We then ran on a course due West, as called for in the MRS. HULDA HOLLIEN Patent, to a fence and marked line, being the East Boundary line of the BENJAMIN CLARK Patent, a distance of 975.84 varas.

We measured in a Northerly direction along the East Boundary line of the BENJAMIN CLARK Patent to its North-East corner, a distance of 895.54 varas.

Accorded to our reconnaissance survey all the corners, with the exception of three of the J. S. MURPHY SURVEY, were found and the ones not found were located from adjacent Patents.

A. E. (Jake) WHITTON  
County Surveyor  
Registered Professional  
Land Surveyor

*A. E. Whitton*  
A. E. WHITTON  
County Surveyor  
Registered Professional  
Land Surveyor  
Reg. No. 1577



10-22-1992

File No. Sketch File 23 B  
San Augustine County  
Sk. & Report San Aug. P-2, J.S. Murphy  
Filed Dec. 18 19 92  
By Garry Mauro, Com'r  
Douglas Howard  
counter 35690



S-U-R-V-E-Y-O-R-S R-E-P-O-R-T

Before beginning our survey of the J. S. MURPHY SURVEY to be Patented we obtained from the General Land Office copies of the DONALD Mc DONALD Patent of 1280 Acres A-289, Sabine County, Texas and A-678, San Augustine County, Texas the MRS. HULDA HOLLIEN Patent of 916 Acres A-285, Sabine County, Texas and A-679, San Augustine County, Texas and the BENJAMIN CLARK Patent of 160 Acres A-94, San Augustine County, Texas and a Working Sketch was prepared since these three (3) Patents surround the J. S. MURPHY.

Since the BENJAMIN CLARK was the Senior Patent we went to the field to the East Boundary line of the ARMSTEAD CHUMLEY LEAGUE, A-6, Patented 1835 in search for the North-West corner of the BENJAMIN CLARK. The DONALD Mc DONALD SURVEY is now owned by a Timber Company and the land has been clear cut as well as bulldozed and the witness trees have been destroyed, but a Concrete Monument was found Stamped South-West corner D. Mc DONALD KIRBY 6-77 set for corner.

We then measured East along a well marked line painted Red, at 799.25 varas another Concrete Monument was found Stamped KIRBY 6-78. The Patent call in the BENJAMIN CLARK was East, 800 varas.

We measured North along a well marked line painted Red, at 73 varas another Concrete Monument was found Stamped KIRBY 6-62. The Patent call of the DONALD Mc DONALD was North 73 varas, so our opinion since these two measurements checked so close to the Patent call, was the North-West corner of the J. S. MURPHY.

We then measured Easterly along a well marked line painted Red a distance of 950.40 varas. We made a search for the corner and witness trees, but as I have already stated this land has been clear cut and a barn has been built and the corner and witness trees have been destroyed.

We then measured Southerly across a pasture and found no evidence of a West Boundary line of the DONALD Mc DONALD, although at 585.66 varas another Concrete Monument was found Stamped KIRBY 6-59.

We continued Southerly along a well marked line painted Red and a fence, at 637.48 varas and another Concrete Monument Stamped KIRBY 6-57 was found set for an internal North-East corner of the MRS. HULDA HOLLIEN Patent and a internal South-West corner of the DONALD Mc DONALD Patent. According to the DONALD Mc DONALD and MRS. HULDA HOLLIEN Patents the South-East corner of the J. S. MURPHY should be North 235 varas from this corner.

We measured back the 235 varas and set a stake for the South-East corner of the J. S. MURPHY.

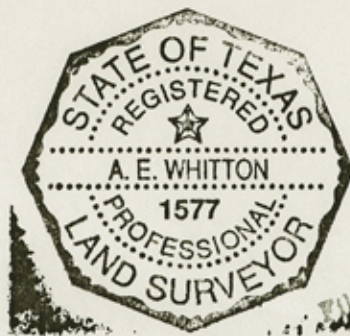
We then ran on a course due West, as called for in the MRS. HULDA HOLLIEN Patent, to a fence and marked line, being the East Boundary line of the BENJAMIN CLARK Patent, a distance of 975.84 varas.

We measured in a Northerly direction along the East Boundary line of the BENJAMIN CLARK Patent to its North-East corner, a distance of 895.54 varas.

Accorded to our reconnaissance survey all the corners, with the exception of three of the J. S. MURPHY SURVEY, were found and the ones not found were located from adjacent Patents.

A. E. (Jake) WHITTON  
County Surveyor  
Registered Professional  
Land Surveyor

*A. E. Whitton*  
A. E. WHITTON  
County Surveyor  
Registered Professional  
Land Surveyor  
Reg. No. 1577



10-22-1992

File No. Sketch File 23 C  
San Augustine County  
Sk. & Report San Aug. P. 2, J.S. Murphy  
Filed Dec. 18 19 92  
By Garry Mauro, Com'r  
Douglas Howard

counter 35691



S-U-R-V-E-Y-O-R-S R-E-P-O-R-T

Before beginning our survey of the J. S. MURPHY SURVEY to be Patented we obtained from the General Land Office copies of the DONALD Mc DONALD Patent of 1280 Acres A-289, Sabine County, Texas and A-678, San Augustine County, Texas the MRS. HULDA HOLLIEN Patent of 916 Acres A-285, Sabine County, Texas and A-679, San Augustine County, Texas and the BENJAMIN CLARK Patent of 160 Acres A-94, San Augustine County, Texas and a Working Sketch was prepared since these three (3) Patents surround the J. S. MURPHY.

Since the BENJAMIN CLARK was the Senior Patent we went to the field to the East Boundary line of the ARMSTEAD CHUMLEY LEAGUE, A-6, Patented 1835 in search for the North-West corner of the BENJAMIN CLARK. The DONALD Mc DONALD SURVEY is now owned by a Timber Company and the land has been clear cut as well as bulldozed and the witness trees have been destroyed, but a Concrete Monument was found Stamped South-West corner D. Mc DONALD KIRBY 6-77 set for corner.

We then measured East along a well marked line painted Red, at 799.25 varas another Concrete Monument was found Stamped KIRBY 6-78. The Patent call in the BENJAMIN CLARK was East, 800 varas.

We measured North along a well marked line painted Red, at 73 varas another Concrete Monument was found Stamped KIRBY 6-62. The Patent call of the DONALD Mc DONALD was North 73 varas, so our opinion since these two measurements checked so close to the Patent call, was the North-West corner of the J. S. MURPHY.

We then measured Easterly along a well marked line painted Red a distance of 950.40 varas. We made a search for the corner and witness trees, but as I have already stated this land has been clear cut and a barn has been built and the corner and witness trees have been destroyed.

We then measured Southerly across a pasture and found no evidence of a West Boundary line of the DONALD Mc DONALD, although at 585.66 varas another Concrete Monument was found Stamped KIRBY 6-59.

We continued Southerly along a well marked line painted Red and a fence, at 637.48 varas and another Concrete Monument Stamped KIRBY 6-57 was found set for an internal North-East corner of the MRS. HULDA HOLLIEN Patent and a internal South-West corner of the DONALD Mc DONALD Patent. According to the DONALD Mc DONALD and MRS. HULDA HOLLIEN Patents the South-East corner of the J. S. MURPHY should be North 235 varas from this corner.

We measured back the 235 varas and set a stake for the South-East corner of the J. S. MURPHY.

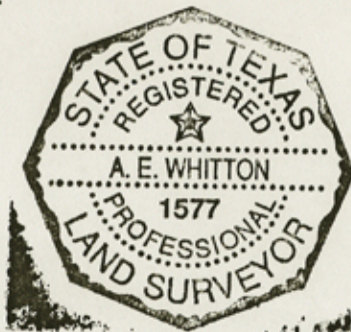
We then ran on a course due West, as called for in the MRS. HULDA HOLLIEN Patent, to a fence and marked line, being the East Boundary line of the BENJAMIN CLARK Patent, a distance of 975.84 varas.

We measured in a Northerly direction along the East Boundary line of the BENJAMIN CLARK Patent to its North-East corner, a distance of 895.54 varas.

Accorded to our reconnaissance survey all the corners, with the exception of three of the J. S. MURPHY SURVEY, were found and the ones not found were located from adjacent Patents.

A. E. (Jake) WHITTON  
County Surveyor  
Registered Professional  
Land Surveyor

*A. E. Whitton*  
A. E. WHITTON  
County Surveyor  
Registered Professional  
Land Surveyor  
Reg. No. 1577



10-22-1992

Sketch File 23D  
San Augustine County  
Sk & Report San Aug. P-2, J.S. Murphy  
Dec. 18 19 92  
GARRY MAURO, Com'r  
By Douglas Howard

counter 35692