

Sketch A

Saufacinto Co

Hills office SK, 15 mi. NW. of
Cold Springs, 11/6/95,

AK

Monty Q-252

Hill, 11/6/95 counter 35716

W. E. MOORE, CHIEF CLERK
ANDREW J. BAKER, COMMISSIONER

GENERAL LAND OFFICE



Call for regulations relative to land matters, like those of Oklahoma, Texas, etc., and also for copies of the General Land Office reports, etc., at the following address: U.S. GEOLOGICAL SURVEY, GENERAL LAND OFFICE, WASHINGTON, D.C.

The Law requires all payments for University, School and Asylum Lands, and purchases made under various Acts to be made to the State Treasurer—they must not be sent to this office.

In correspondence relating to lands, always give Name of Original Grantee, with class and quantity, and County in which it is located.



ANDREW J. BAKER, COMMISSIONER.
M. E. GROOS, CHIEF CLERK.

GENERAL LAND OFFICE.

AUSTIN, TEXAS. 189

The Law requires all payments for University, School and Asylum Lands, and purchases made under various Acts to be made to the State Treasurer—they must not be sent to this office.

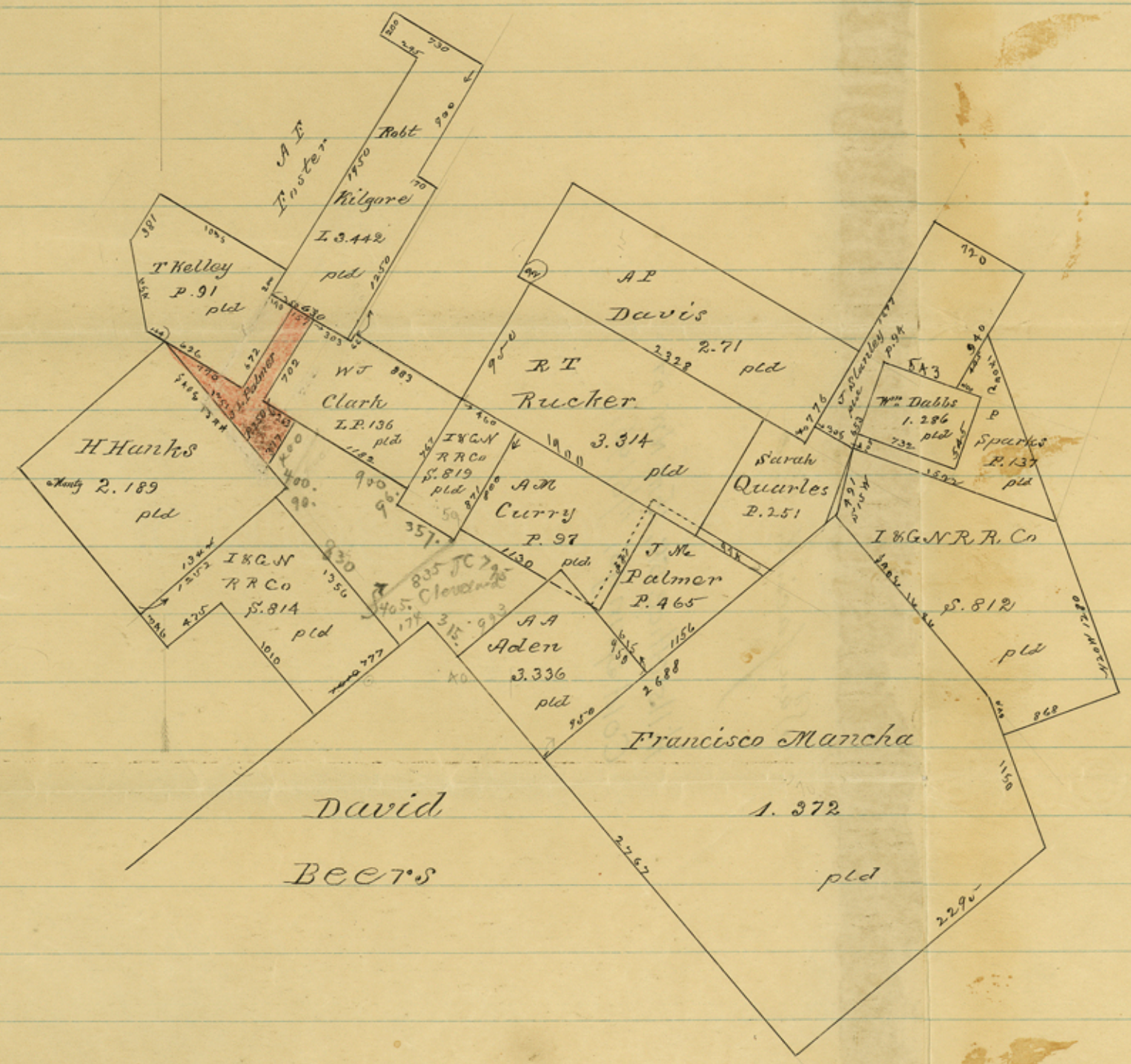
In correspondence relating to lands, always give Name of Original Grantee, with class and quantity, and County in which it is located.



ANDREW J. BAKER, COMMISSIONER.
M. E. GROOS, CHIEF CLERK.

GENERAL LAND OFFICE.

AUSTIN, TEXAS. 189



San Jacinto Co
11/6/95
1000 to 1 inch.

counter 35717
Hill