

N^o 4., 4(a) & 4(b).

Caldwell County.

Statement in regard to
Barnard Kleeoamp League
filed in the Genl. Land Office

March
Febr 27th 1898

Contents.

Sketch File No. 4.

" " " 4(a).

" " " 4(b).

36 inches 1120
 12 1325
 72 1210
 36 419
 332

17600 = 19008 var / 1.08
 42 17600
 140800
 140800

0.92741 of a yard as recog 1080
 36
 556446
 278223
 3338676 108 10.
 708

1900800 / 176
 1086
 8208
 7560
 6480
 6480

33, 3.

1 var = 33 1/3
 3 var = 100 inches
 100

360 1900.8 / 5
 1800
 1808

1 var = 33 1/3 12
 3 var = 100 inches 24
 12 48
 3 0, 66 60
 72
 72 84
 1.92 96

528 12
 36 36 : 144 / 4.
 31680
 15840
 190180

3 1/3 inch = 1 var

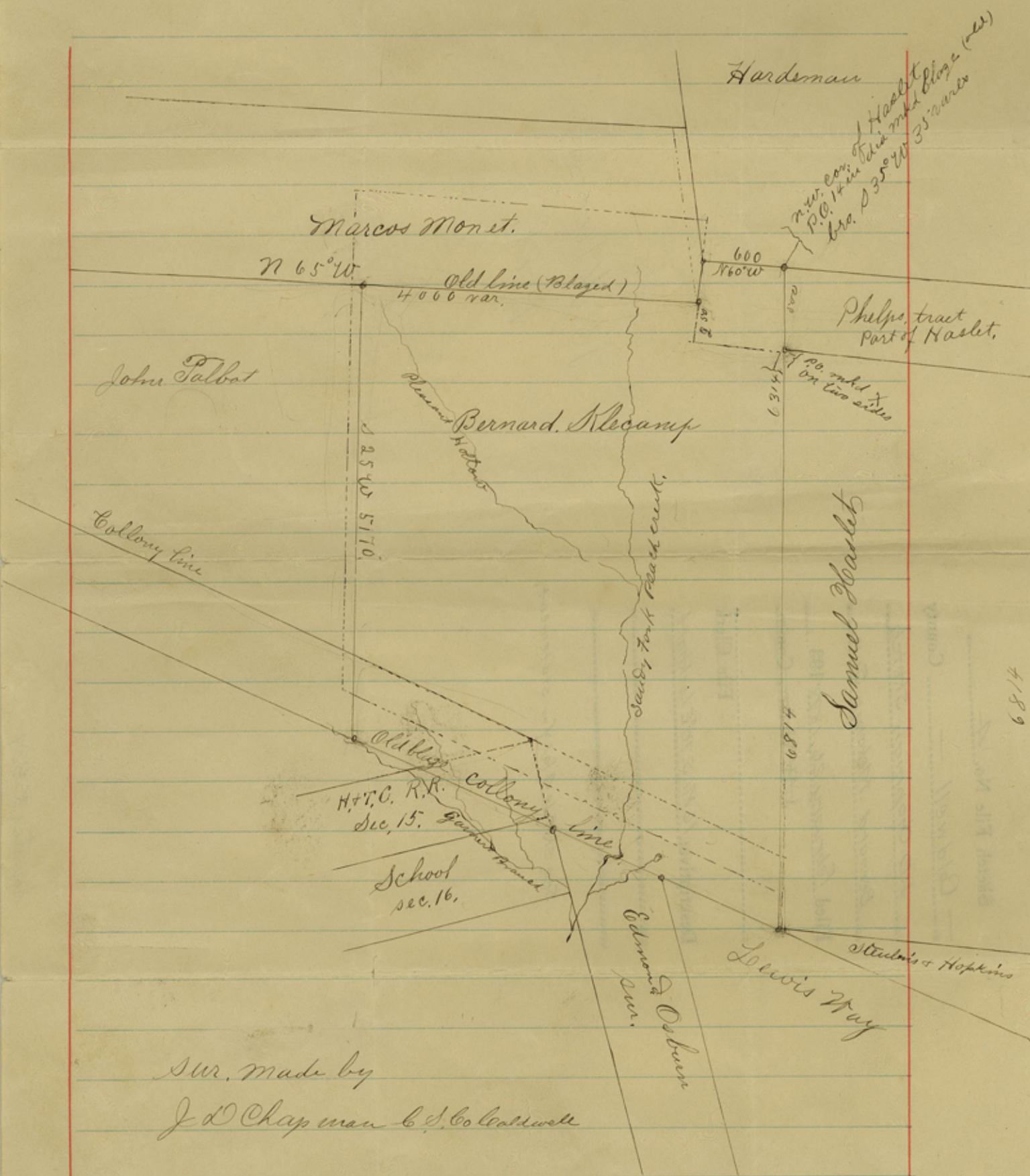
100 in. 1 var = 33 1/3 in
 3 var = 100 in.

3 var = 100 / 33 1/3
 9 / 10 12

36 : 100 var / 2

387 1290
 16 903
 2977 10
 2203
 1290
 169
 2580 1219
 258
 2588 1290
 1290 1161
 576 2451
 173 1290
 1819 645
 1935
 2580
 129
 35
 2760
 3870 3870
 12 4386
 3870 3870
 516
 3870 77
 1161 4363
 10
 5041 1290
 912580 645
 774 12
 26 4348
 913350
 2580
 774
 10
 3364

Counter 35832



sur. made by
 J. D. Chapman & Co. Caldwell

6814

Sketch File No. 4

Caldwell County

J. D. Chapman Sketch

Bernard Klekamp Sur.

Filed February 26, 1898 1898

J. H. Walker, Comm.

File Clerk

Descriptive: 16 Mi. S. 70° E Lockhart.

See sk. File 4(a) for statement.

Filed Feb. 26/98.

B. Klekamp
Plot.