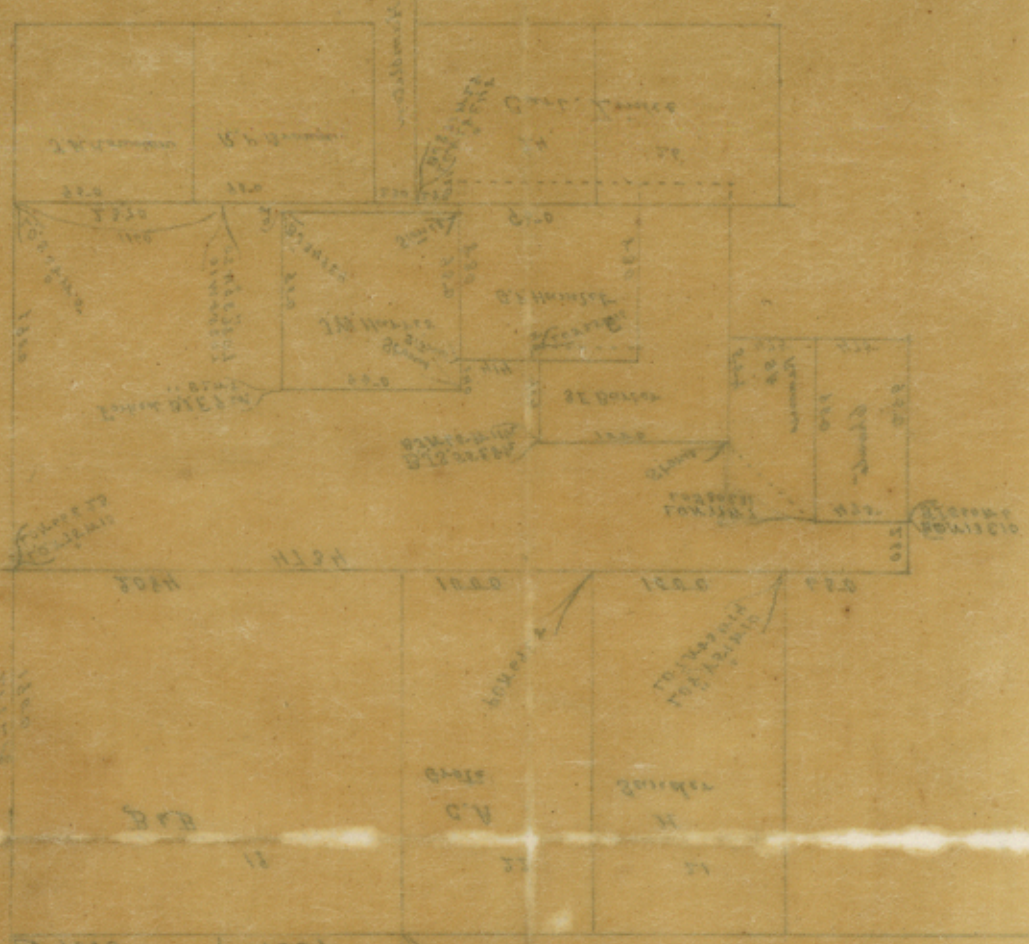


San Sabaco

W L Hays

Handwritten notes in the top left corner, partially obscured by a tear.



70

San Sabaco

W L Hays SK of Surveys around  
Sec. 19. B & B.  
Dated Sep 27, '83



9/27/83





I, W. L. Hayes, County Surveyor San Saba County, do hereby certify that the above sketch is true and correct, as I found the surveys on the ground.

W. L. Hayes  
County Survey S.S. Co.

September 27<sup>th</sup> 1889.

W. Robinson  
Chief Clerk

See S. 22481 for connection & sketch.