

© ~ Represents original corner.  
 o ~ Represents corners made

PART OF SCHLEICHER CO., TEXAS,  
 SHOWING A RESURVEY OF  
 SECTIONS-18, 20, 22, 36, 38 AND 40, BLK. A,  
 AND  
 SECTION 4, BLK. B., G. C. & S. F. R. R. CO.

As made by me in December 1927.

*J. A. Simpson*  
 Licensed Land Surveyor  
 San Angelo, Texas.

Scale - 1" = 1000 vrs.



Presented to G. L. O. by  
 Mr. J. A. Simpson, in  
 person, on 5/9/36.

counter 36512

Blucher



Schleicher Co. <sup>22</sup>  
St. File

BIKs A & B,

Presented to this office  
by J. A. Simpson —  
5-9-36 Giler

ST<sup>1</sup>

counter 36513



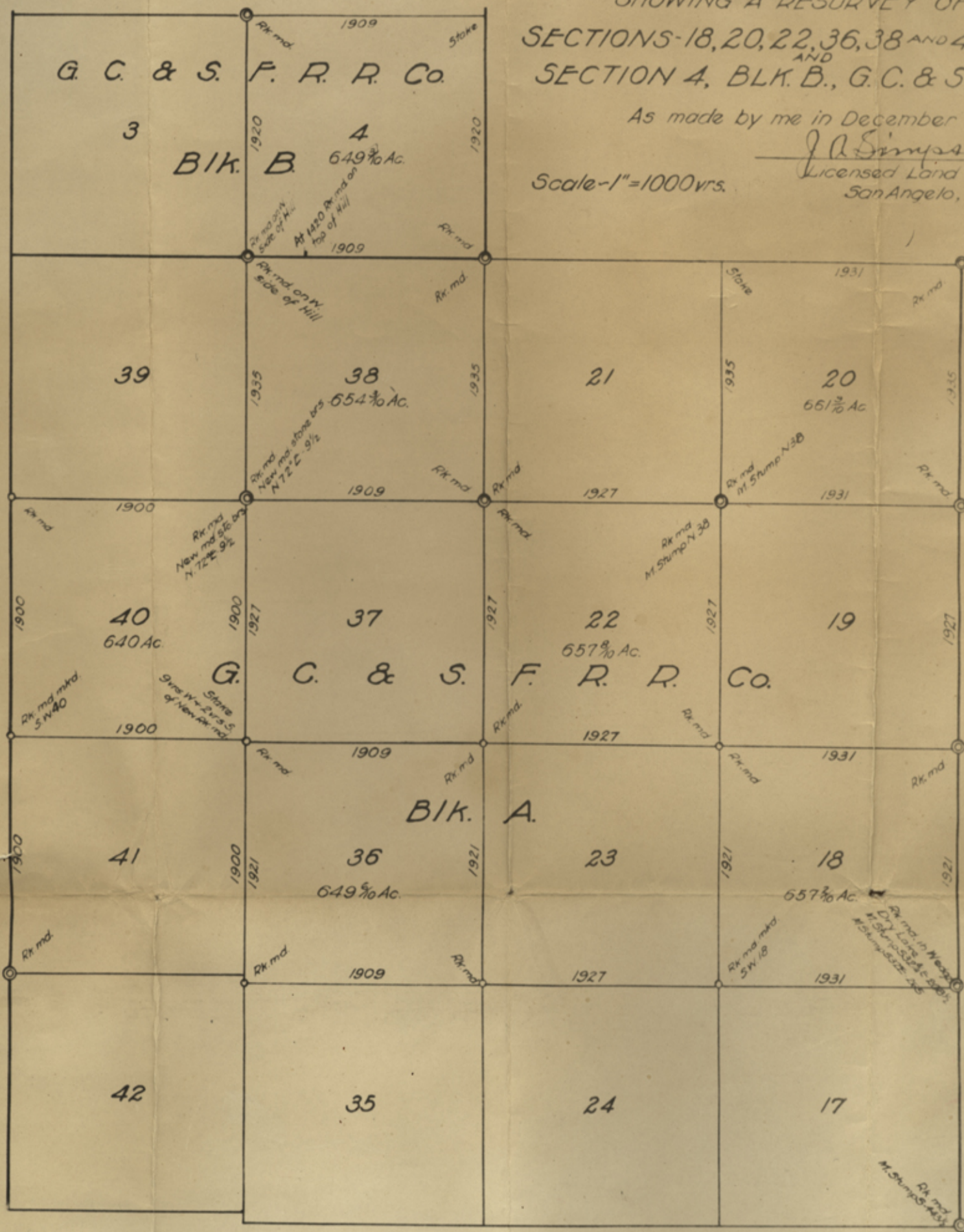
⊙ - Represents original corner.  
 ○ - Represents corners made

PART OF SCHLEICHER CO., TEXAS,  
 SHOWING A RESURVEY OF  
 SECTIONS-18, 20, 22, 36, 38 AND 40, BLK. A,  
 AND  
 SECTION 4, BLK. B., G. C. & S. F. R. R. CO.

As made by me in December 1927.

*J. A. Simpson*  
 Licensed Land Surveyor  
 San Angelo, Texas.

Scale - 1" = 1000 vrs.



ST