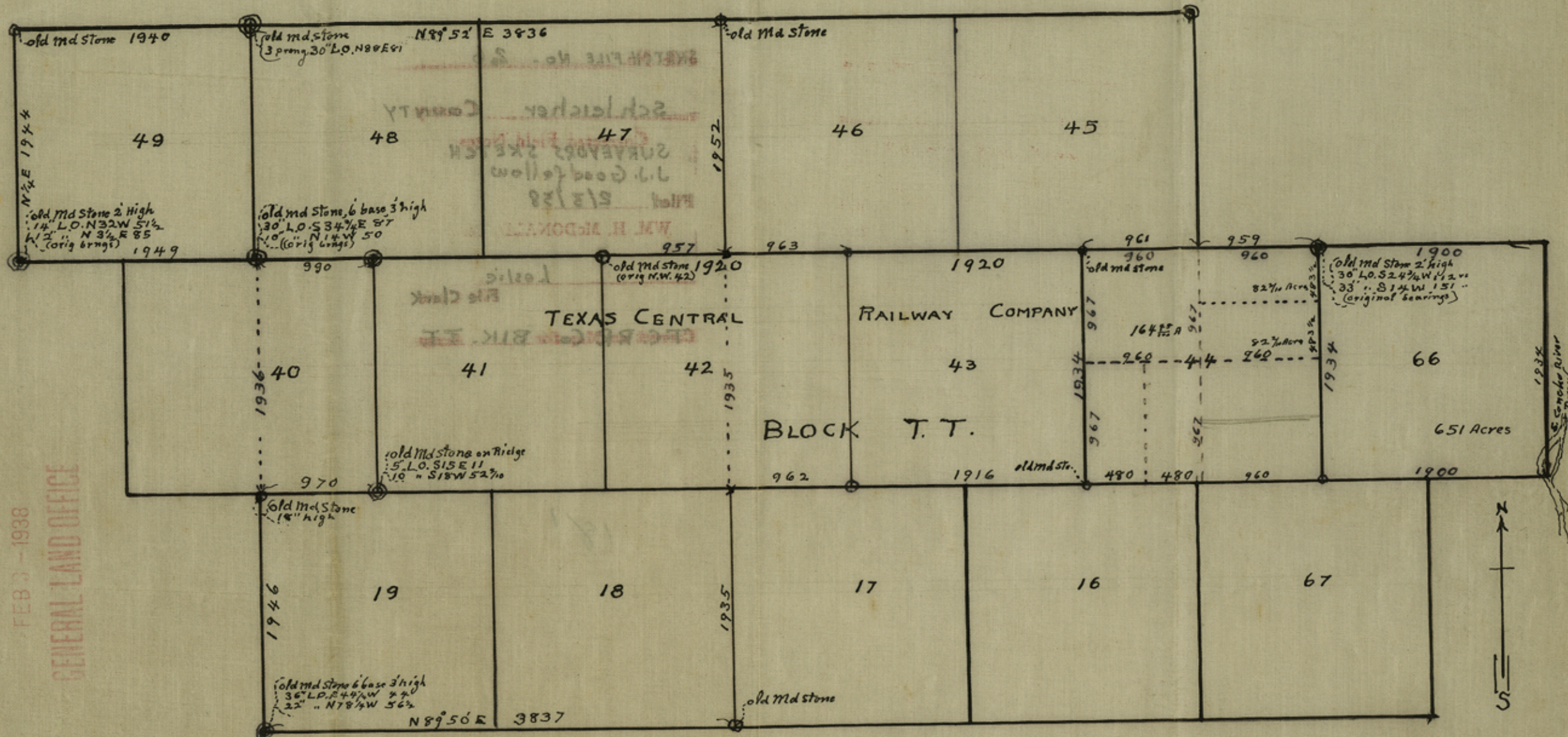


114



RECEIVED  
 FEB 3 - 1938  
 GENERAL LAND OFFICE

A copy of the above plat was filed in my office on the 29th day of January, 1938, and recorded in Vol. 3, page 267, Surveyors Records of Schleicher County, Texas.

Witness my hand and seal of office, this the 31st day of January, A. D., 1938.

*John T. Jones*  
 Clerk County Court,  
 Schleicher County, Texas.

Scale: 1"=1000. vs

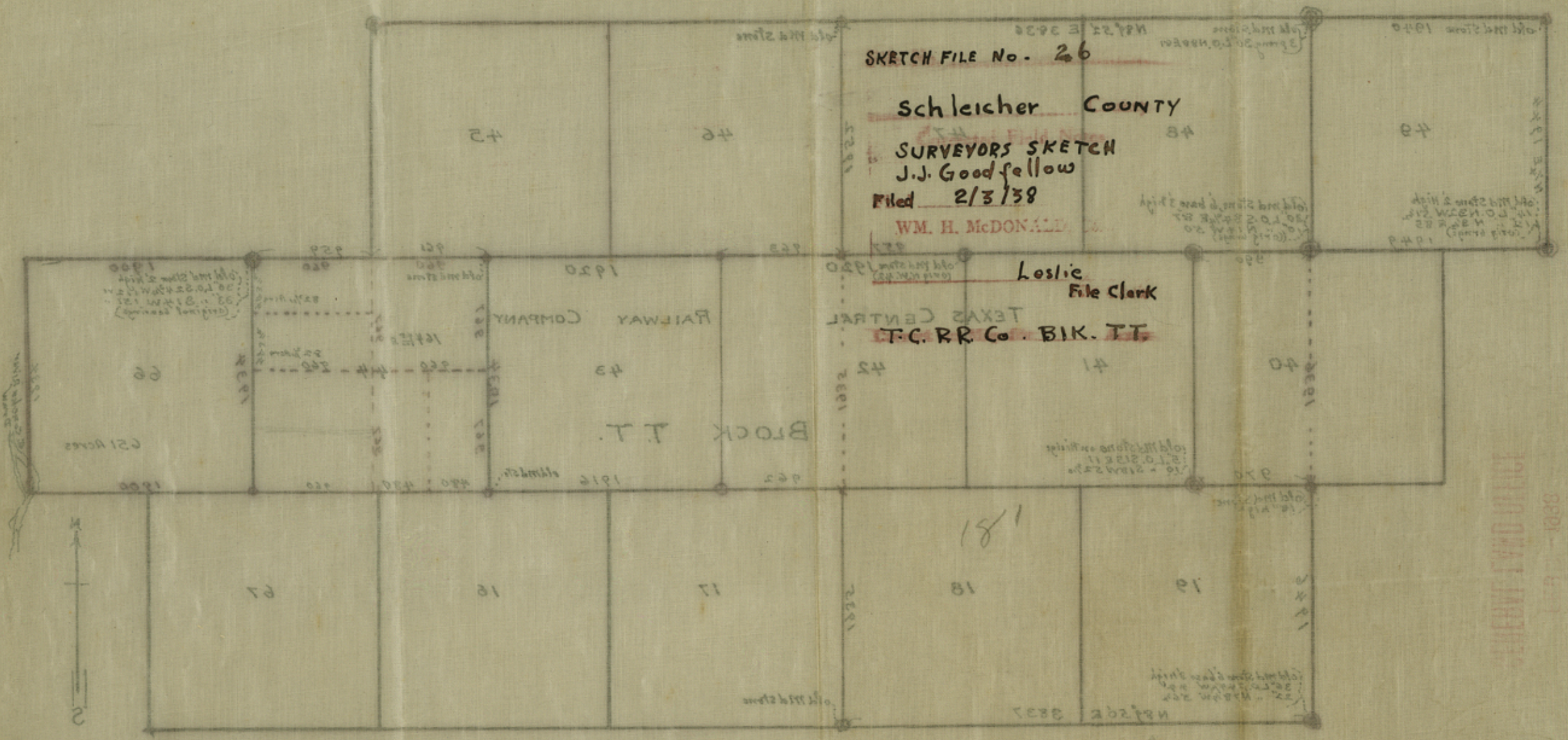
STATE OF TEXAS } J. J. Goodfellow, licensed land surveyor of Texas, do hereby certify that the County of Schleicher } foregoing map correctly shows the position of surveys 144 and 66 in Block "T.T." in the name of T.C. Ry Co. in Schleicher County Texas, about 10 miles N. of Colorado, and that the lines shown with distances thereon, were actually run by me and that the corners as described on this map, represent corners found on the ground by me, and the bearings shown at corners represent bearing found - Given under my hand and seal of office - This the 19th day of Jan, 1938

*J. J. Goodfellow*  
 Licensed land Surveyor - San Angelo Texas.

18

counter 36524





SKETCH FILE No. 26

Schleicher County  
 SURVEYORS SKETCH  
 J.J. Goodfellow  
 Filed 2/3/38  
 WM. H. McDONALD

Losie  
 File Clerk  
 TEXAS CENTRAL  
 T.C.R.R. of T.T.

STATE OF TEXAS: J.J. Goodfellow, licensed land surveyor of Texas, do hereby certify that the County of Schleicher, foregoing map correctly shows the position of surveyors 181 and 182 in Block T.T. in the name of T.C.R.R. of T.T. Schleicher County, Texas, about 181 and 182 of the above and that the lines shown with distances thereon, were actually run by me and that the courses as described on this map represent courses found on the ground by me and the bearings shown as correct represent bearing found — given under my hand and seal of office this 21st day of January 1938.  
 J.J. Goodfellow  
 Licensed Land Surveyor - San Angelo, Texas

Scale 1"=1000.00'

A copy of the above plat was filed in my office on the 21st day of January, 1938 and recorded in Vol. 3, page 387. Surveyors records of Schleicher County, Texas.  
 Witness my hand and seal of office this 21st day of January, A. D., 1938.

Wm. H. McDonald, Clerk County Court, Schleicher County, Texas.  
 Counter 36525

RECEIVED  
 JAN 21 1938  
 COUNTY CLERK